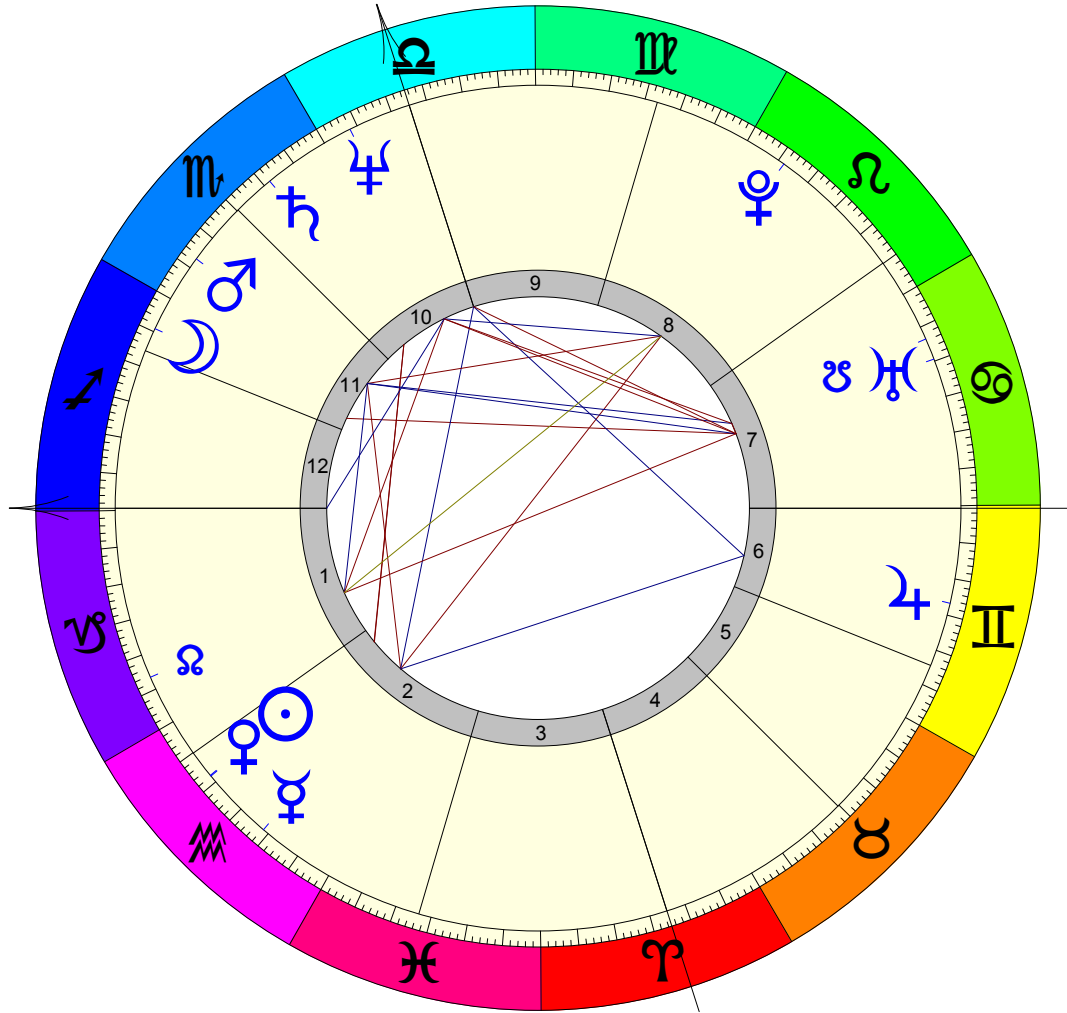


| | | | |
|--------------------|----------------------|------------------|-------------------|
| Oprah Gail Winfrey | Friday | Placidus | Medium Orbs |
| | 1/29/1954 4:30:00 AM | Time Zone: 6:00W | Summer Time: 0:00 |
| | Kosciusko | Mississippi | 33N04 89W36 |

| | |
|---|-------------|
| ☉ | Sun |
| ☾ | Moon |
| ☿ | Mercury |
| ♀ | Venus |
| ♂ | Mars |
| ♃ | Jupiter |
| ♄ | Saturn |
| ♅ | Uranus |
| ♆ | Neptune |
| ♇ | Pluto |
| ♁ | N. Node |
| ♂ | S. Node |
| ♈ | Aries |
| ♉ | Taurus |
| ♊ | Gemini |
| ♋ | Cancer |
| ♌ | Leo |
| ♍ | Virgo |
| ♎ | Libra |
| ♏ | Scorpio |
| ♐ | Sagittarius |
| ♑ | Capricorn |
| ♒ | Aquarius |
| ♓ | Pisces |



| | |
|-----------------|--------------|
| ∟ | Semisquare |
| * | Sextile |
| □ | Square |
| △ | Trine |
| ▣ | Sesquisquare |
| ⋈ | Quincunx |
| ♁ | Opposition |
| A ^{SC} | Ascendant |
| D ^{SC} | Descendant |
| M ^{Co} | Medium Coeli |
| I ^{Co} | Immun Coeli |
| R _X | Retrograde |

| | | |
|-----------------|-------|---|
| A ^{SC} | 29.39 | ♈ |
| 2 | 5.02 | ♒ |
| 3 | 13.17 | ♏ |
| I ^{Co} | 17.23 | ♏ |
| 5 | 14.50 | ♏ |
| 6 | 7.50 | ♏ |
| D ^{SC} | 29.39 | ♏ |
| 8 | 5.02 | ♏ |
| 9 | 13.17 | ♏ |
| M ^{Co} | 17.23 | ♏ |
| 11 | 14.50 | ♏ |
| 12 | 7.50 | ♏ |

| | | | | | | | | | | | | | | |
|-----------------|---|---|---|---|---|---|---|---|---|---|---|---|-----------------|-----------------|
| | ☉ | ☾ | ☿ | ♀ | ♂ | ♃ | ♄ | ♅ | ♆ | ♇ | ♁ | ♂ | A ^{SC} | M ^{Co} |
| ☉ | | | ♂ | | | □ | | | | | | | | |
| ☾ | | | | | | □ | | | | | | | | |
| ☿ | | | | | | | | | | | | | | |
| ♀ | | | | | | | | | | | | | | |
| ♂ | | | | | | | | | | | | | | |
| ♃ | | | | | | | | | | | | | | |
| ♄ | | | | | | | | | | | | | | |
| ♅ | | | | | | | | | | | | | | |
| ♆ | | | | | | | | | | | | | | |
| ♇ | | | | | | | | | | | | | | |
| ♁ | | | | | | | | | | | | | | |
| ♂ | | | | | | | | | | | | | | |
| A ^{SC} | | | | | | | | | | | | | | |
| M ^{Co} | | | | | | | | | | | | | | |

| | | | | |
|---|-------|---|----------------|----|
| ☉ | 8.59 | ♒ | | 2 |
| ☾ | 4.32 | ♏ | | 11 |
| ☿ | 19.09 | ♒ | | 2 |
| ♀ | 8.51 | ♒ | | 2 |
| ♂ | 23.34 | ♏ | | 11 |
| ♃ | 16.39 | ♏ | R _X | 6 |
| ♄ | 9.02 | ♏ | | 10 |
| ♅ | 20.18 | ♏ | R _X | 7 |
| ♆ | 26.03 | ♏ | R _X | 10 |
| ♇ | 24.07 | ♏ | R _X | 8 |
| ♁ | 23.14 | ♏ | | 1 |
| ♂ | 23.14 | ♏ | | 7 |

Life Path

Ascendant In Sagittarius

PROFESSIONAL - LIFE-PATH: Influence & understanding
You are philosophical, love freedom and open horizons, and these needs will be reflected in your choice of job. You would be happiest in an employment which offers dynamic possibilities, constant change and future promise. You would work well in pioneering ventures, especially if they offered connections abroad, or the opportunity to expand your inner or outer horizons. You are a person of extremely strong convictions and you are a passionate believer in justice. As your ideals are all-important, you have a need to see your work having an effect on society in some way. It is also essential for you to feel that what you do has meaning on a larger scale. Winning the hearts and minds of other people is important, so you may involve yourself in further education projects, consultancy, publishing and the media, or shaping public opinion in some way.

PERSONAL - LIFE-PATH: Influence & understanding
You are powerfully motivated to understand your place in the world and the meaning of your existence. Your curiosity and need to explore your boundaries will lead you to travel considerably during the course of your life. If or when you prefer the settled life, then you will read, study and discuss to gain further insight into the world. You are philosophically orientated, seeking depth and answers. In partnership matters you may often feel that your opinions are trivialised; conversely other people feel you take yourself too seriously. When you are bombastic and opinionated, other people compensate by being flippant or, in your eyes, superficial. An acceptance of the relativity and diversity of truth, and a certain self-deprecating humour, can make you easier to get on with.

Ascendant Sextile Neptune

Though not especially strong, you will be able to feel the influence of this aspect under many circumstances.
When reading the following text, please bear in mind that you will for the most part experience only the positive effects of this aspect. You are particularly stimulated to learn and communicate, as regards the matters concerned.

PROFESSIONAL - LIFE PATH: The spiritual path
You are rarely motivated by purely ambitious interests, and therefore you function best when engaged in a job in which you can invest your ideals and dreams. Ordinary goals can hardly satisfy your needs, which are more orientated towards feelings and sensitivity, or music and creativity. You need to feel moved by influences beyond the personal.

PERSONAL - LIFE PATH: The spiritual path
It is important for you to overcome a subtle feeling of dissatisfaction or sorrow in your life - both in connection with the direction your life takes, and in connection with partners. This involves finding a sense of meaning in your existence. Creative or spiritual interests, and the pursuit of inner purity, can bring much needed inner harmony. You are very impressionable and easily influenced by the vibrations of other people, so you need to indulge in periods of withdrawal.

Jupiter In Gemini Retrograde

Because this planet was retrograde at your birth, you will have an instinctive knowledge of, and attraction to, the following traits and activities. You will tend to be introvert in these matters, and pursue your own individual path in strong contrast to the path

chosen by others.

PROFESSIONAL - WISDOM: Positive thoughts - positive outcomes
You were born in a year in which there was renewal and expansion in the world of education, travel and communication. As such you can be an agent for these changes - and this will manifest in your nature as an insatiable desire to acquire knowledge and create contact with people. Interest in languages, schooling and all forms of mental activities can be a major part of your professional life. There may be talent for writing or working in the media, and you have the ability to maintain your perspective when working with a mass of information. By harnessing the power of your thoughts, you can shape your future the way you want it. Defining how you want it may be more difficult, and this requires mental discipline and planning which is something you have to consciously train, as it may not come naturally.

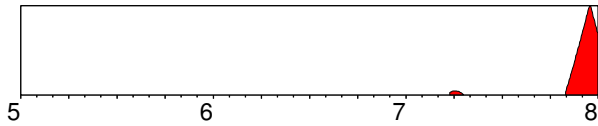
PERSONAL - WISDOM: Collective ideas
Because you have a wide spread of interests you may lack the capacity to concentrate on one subject for any length of time. You get easily distracted and seem to want to occupy your mind all the time and have an opinion about everything. Perhaps you need to discriminate between what is useful to know, and what isn't. Your talents lie more in understanding the actual workings of the mind, and you can contribute to personal success by learning and applying mental techniques. When you harness this influence positively you can be a veritable encyclopaedia of information. What is more, you may have a particular talent for humour, and can be at your best when exchanging pleasantries socially.

Jupiter In 6th House

PROFESSIONAL - WISDOM: Daily significance
You have good judgement and executive ability, and have the ability to create a well-functioning working environment. This is probably because you spread an atmosphere of tolerance and optimism about the future around you. Colleagues will appreciate your buoyant disposition and considerable insight at work, and you will be well-loved in a managerial position. Your ability to grasp the main issues suits you for a position in middle-management in which you delegate work. You can function independently but it is also important for you to feel that you are of service to, or in, a larger enterprise. Career developments will often take a fortunate turn and may bring travel or an international environment. You may have a talent for working with judicial matters - your superior judgement should at least be put to good use in one form or another.

PERSONAL - WISDOM: Daily significance
Other things being equal, you are a kind and helpful person, and you know how to get the best out of everyday life in a relationship. You are efficient when working but at the same time you know how to create time to relax and enjoy life. Where other people often get weighed down by daily tasks, you find enjoyment in them and even gain insight into larger issues through daily rituals. You are magnanimous in offering help and caring when you encounter people in need. You may have a special talent for health matters, and you are specifically good at harnessing the power of positive thinking to benefit the mind and body.

Jupiter Transiting Conjunction Ascendant 3/27/2007 -> 12/31/2007

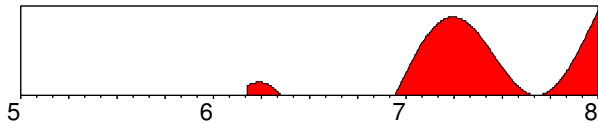


Major changes will occur in the area of your life described here and you will integrate new personal behaviour and attitudes in your life.

PROFESSIONAL - LIFE-PATH: Faith in your future
It is important at this stage of your life not to let yourself be limited by previous convictions concerning what is possible and what is not. You should allow yourself to become empowered by a new vision of how you want your future to unfold. The dreams you enunciate now will energise your future and fertilise the ground for it to happen. This means defining your professional hopes and wishes to ensure that they give meaning in the long term.

PERSONAL - LIFE-PATH: Faith in your future
You are emerging from a more introverted and meditative state into a new outgoing period which should see your personal contacts getting a boost. Your confidence and charisma should have an opportunity to blossom now, and you will probably find that you gain a greater appreciation of your place in the scheme of things. A renewed faith in your capacity to shape your future leads to an expansion of your horizons, and an optimistic attitude predisposes you to experience a degree of luck - especially in relationships. For a while, everything seems possible.

Pluto Transiting Conjunction Ascendant 3/6/2006 -> 12/31/2007



You can expect powerful change in this area, as you learn to integrate the following influence into your life.

PROFESSIONAL - LIFE-PATH: Lifepath transformation
This is a long period of personal transformation which will inaugurate a total change in the direction of your life. This process is bound to affect your career, because you will no longer be satisfied with working at something which does not involve you 100%. As you now develop a deep interest in psychological and emotional issues, you may wish to integrate new-found insights into your career.

This is a time when you discover and harness your latent personal power, so you can no longer tolerate situations in which you are misused or dominated. You will work hard during this period and at times feel very exhausted. Your energy oscillates between manic and intense activity and a need for complete rest.

PERSONAL - LIFE-PATH: Lifepath transformation
This is one of the major periods of personal transformation in your life. You can expect a complete reorientation brought about by a deep sense of tiredness with the way you have led your life until now. You will see many issues as black or white and will have very little desire to compromise. You may even feel that your personal survival is at stake. You will be acutely aware of your mortality and you will be reminded of the eternal presence of death, perhaps because of the loss of someone you know well. If you feel that there is emptiness where the future should be,

know that this is in connection with the forthcoming transformation of your life. Drop those things which drag you down, and make a concerted effort to go for a vision of the future based on what you really want. You cannot afford to compromise now and must resist pressure to maintain the status quo - even at the risk of losing loved ones.

Identity

Sun In Aquarius

PROFESSIONAL - IDENTITY: Energise your social environment
Many people will find you an inspiring person to be with, and indeed you are strongly motivated to maintain friendly relationships with people. You may feel inspired by a sense of social equality, and your dealings with others will be infused by your natural sense of humanity and fairness. You are well suited to dealing with groups professionally, and you have a talent for treating people as equals. Paradoxically it can be difficult for you to feel truly a part of the groups you do so much to establish - in some ways you are a visionary and people instinctively sense that this makes demands on them to change. You may not be so willing to change yourself, however, and you can have rather fixed opinions. Basically, though, you are reliable and friendly, and will be a valued colleague. Your own ambitions are not particularly pronounced, and people rarely feel threatened by you.

PERSONAL - IDENTITY: Energise your social environment
The great turning points in your life happen in connection with upheavals in social relationships. As your opinions and beliefs change you will find yourself redefining who you want to be together with. The loss of good friends for one reason or another can thus lead to a strong sense of isolation whilst you re-evaluate your visions. Your greatest talent is the unconscious ability to create an almost magic atmosphere when you are together with people. Although you are warm and friendly, in intimate relationships you can be rather uncomfortable about showing your emotions. When under emotional pressure, you tend to freeze up and establish a distance, and this can be rather disturbing for your partner. A wise partner will never stand in the way of you and your friends.

Sun In 2nd House

PROFESSIONAL - IDENTITY: Creating personal values
Much of your energy and attention is focused on building up a solid sense of self-esteem. Inasmuch as you interpret your experiences as reflecting your personal esteem, you will strive hard to build a solid economic framework for your life. Other things being equal, security will be very important to you - both as far as your finances and your family life is concerned. You tend to gravitate towards, and stick to, a stable job, in which your expertise and personal character are your greatest assets. You have a talent for dealing with finances and quality items. In business matters you are a person of honour, and you are willing to put your reputation at stake for the sake of those for whom you work.

PERSONAL - IDENTITY: Creating personal values
Material values and status are seen by you as a testimonial to your self-worth. Therefore you build up strong attachments to things and have a keen sense of values. Some people may see you as materialistic, but for you material acquisitions can be a strong foundation for continued growth, and success in this area means you are often in a position to be quite generous. You need to feel that you are respected in all areas of your life; therefore you embrace conventional values and stick to them. It takes a lot

to get you to shift your view or perspective. However periods which bring economic changes can lead to a profound reevaluation of your values.

Sun Conjunction Venus

This aspect is extremely powerful in your horoscope; it will dominate many areas of your life.

This conjunction shows a fusion of energies in you. Both the positive and negative sides of this aspect will be an integral part of your character.

PROFESSIONAL - IDENTITY: Style

This contact evokes in you a very strong aesthetic awareness and quite considerable personal charm. You have the ability to make a warm and enriching contact to others and inspire them with your presence. Your diplomatic talents, and strong sense of personal values, gives you many advantages in a variety of areas. You are not a forceful person, and in general you do not like competition, but you can get your way through persuasiveness and charm. Your natural charisma and winning manner ensures personal popularity. You would not be happy in a job in which confrontation and conflict plays a role, and your talents are best utilised dealing with personnel, diplomacy, or matters related to taste, style or a refined judgement.

PERSONAL - IDENTITY: Style

It is extremely important for you to feel liked, and you go to considerable lengths to make a good impression. You are personally warm and affectionate, and enjoy both making and being the recipient of romantic gestures. Your mild manner probably comes from your father, who may well have been very loving and considerate. Indeed, women with this aspect often idealise their fathers and have difficulty shaking off their attachment. Later in life they will tend to become romantically involved with a softer type of man, in whom they imagine very gallant properties. For both sexes problems can arise through denial of the shadow side of the personality and the reluctance to see that people cannot always be ladies and gentlemen. Sometimes too, there may be a tendency to manipulate others through the conscious use of charm, and a far too rosy self-portrayal. Nevertheless personal self-esteem is a central issue for the identity, and learning to love and accept yourself is a prerequisite before you can function well in a relationship.

Sun Square Saturn

This aspect is extremely powerful in your horoscope; every action you take will be coloured by this energy.

As there is tension between these two planetary influences in your chart, it will be very difficult for you to achieve the promised beneficial results before the age of 30.

PROFESSIONAL - IDENTITY: Winning self-esteem

You are a hard-working and ambitious person with a strong drive to prove yourself in society. There may however be difficulties with authorities, despite your desire to live up to the expectations of society. The first 30 years of your life will bring a great deal of obstacles to success, but you will learn important lessons and ultimately develop a self-sufficiency and discipline which lays the foundation for success later in life. It is important for you to overcome negativity or pessimism concerning the future. Not all success is won by hard work alone. You are often more motivated by the fear of failure than the promise of reward, and this can hold you back from realising your full potential. If all goes well you will acquire more and more responsibility during the course of your life - and you deserve it. You are conscientious and take your responsibilities seriously. You are the kind of person other people

can rely on. You would rather be the power behind the throne, than have a high profile yourself. Remember to take time to enjoy the fruits of your efforts, instead of continuously driving yourself onwards.

PERSONAL - IDENTITY: Winning self-esteem

You are a rather formal person who takes life seriously. Childhood experiences - especially the relationship with your father - has undermined your self-confidence and made you reluctant to stick your neck out. You are more likely to bury your "talent" than gamble with it. You have a strong need for approval, but as a child love and approval was always conditional on your performance. You have been more appreciated for what you did, than for who you are. Later in life you tend to judge yourself harshly, and you have a bad conscience about enjoying life and relaxing. You tend to be too dismissive when offered love and affection, and rather severe when giving it. There may be authoritarian tendencies and a lack of flexibility as regards rules. Nevertheless, you are a person who can be trusted. You have high principles, and as you do not indulge expectations of the easy life, you work hard to build up a secure structure in life for those you hold dear.

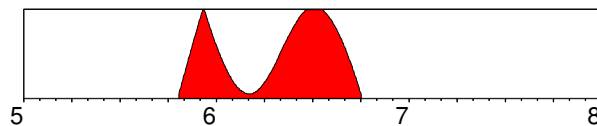
IDENTITY - IDENTITY: Winning self-esteem

Your relationship to your father was probably strongly affected by hard discipline and high expectations. The bond may be strong, but characterised by your efforts to win his approval. If you got good grades at school, your father will have expected even better. Naturally as you grow up you integrate a severe sense of values which is a strong motivational factor for achievement. You become your own harshest judge.

Actually you are born with the need to create a strong internal structure and set of rules for your life - you evoke behaviour in your parents so that this need is fulfilled. You expect to be disciplined. Furthermore you are unreceptive to praise, so that when people come with favourable comments on your work and deeds, you have the tendency to play down your efforts in a dismissive manner. People learn that you do not want recognition, even if you think you do. The only kind of recognition and acceptance that really works for you is your own - yet as you judge yourself hard, this rarely comes. You are, then, your own master, so why not try giving yourself some rewards. Internal praise has a very healing effect on you, and this is a question of confronting the inner voice of guilt and enlisting its support to make you strong.

Jupiter Transiting Square Sun

10/22/2005 -> 10/2/2006



Major irritation factors arise as a result of this influence, yet if you use this period to initiate dynamic change you will be able to make dramatic progress in your life.

PROFESSIONAL - IDENTITY: Creating your future

During this phase of rising self-confidence you can expect your plans for expansion to take off. You should be thinking positively about the future now, visualising how you would like things to be as vividly as possible. Your power to get what you want is at its highest, so start expounding your visions of a bright future. Remember: you get what you focus on, so focus on what you want.

It is favourable to expand into foreign countries; higher education,

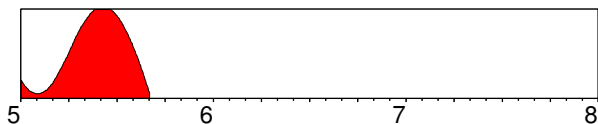
public relations and insight-enhancing projects will also bring success. Whatever you do, it is essential that it has depth and meaning for you. Don't waste important time on trivial matters - success is about the quality of life and making an impact with the essence of your own identity. If necessary take time off from work to build up a new vision for your future. If you have any legal problems, you will be confronted with them now so ensure that you are morally unassailable. And don't over-estimate yourself and your capacities. Make sure your plans are within the boundaries of reality.

PERSONAL - IDENTITY: Creating your future

During this phase of your life you will be given the opportunity to find a new sense of meaning in your existence. Bubbling up from within, you have the chance to release a new energy and enthusiasm based on a sense of your personal relevance to this planet. Travel abroad and contact with people you respect for their intellectual and spiritual capacities will now expand your world-view. Knowledge and understanding will enable you to build up a broader moral base with greater insight and tolerance. This is a very favourable time for religious growth if you are so inclined, or philosophical and intellectual insight. In many ways the world opens to you and reveals its gifts and blessings for you to enjoy. Take care as you sample the pleasures of this cornucopia and don't overestimate yourself - personal hubris will be punished and you may find yourself coming down to Earth with a bump.

Jupiter Transiting Trine Sun

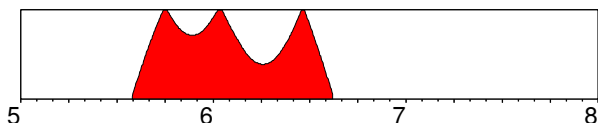
1/1/2005 -> 9/2/2005



Please read page 5: "Jupiter Transiting Square Sun"

Saturn Transiting Opposition Sun

8/1/2005 -> 8/15/2006



Very strong tensions will occur in your life in the following area. Other people will impinge on your life and force you to adjust.

PROFESSIONAL - IDENTITY: Long-term strategy

You can use this period to rise to the many professional challenges in your life and create the foundations for lasting growth. This is no easy time; many difficulties arise and you will have to work harder and shoulder more responsibilities. Authority figures make demands on you, seemingly without giving you any recognition. If you try to avoid commitment now, you are likely to be dogged by worries and problems. Your self-confidence may be low, and you may feel that you cannot live up to the expectations of others. Time will show that you can overcome difficulties and achieve goals.

Planning and strategy is of the essence, and it pays to plan months ahead and to tighten up schedules, working to realistic deadlines in a committed manner. By completing your work in stages and dividing large projects into smaller sections, you will find that you can handle enormous responsibility. You will not get something for nothing now, but hard work will be rewarded in the long term, so roll your sleeves up and get down to it.

PERSONAL - IDENTITY: Long-term strategy

At the beginning of this phase you will probably not be feeling so good about yourself. You may feel that you do not get enough - or don't deserve - recognition. There is a strong inner feeling that you must pull yourself together and do something worthwhile, and the sooner you do this, the better you will feel. There is a general feeling of being weighed down by burdens, and there may be a lot of pressure to live up to the expectations of others.

It is time to take responsibility for your own life and to define new goals, whilst you can send a strong signal to other people - parents in particular - that you can look after yourself. By rising to the challenges of the time, you can develop a strong inner feeling of self-satisfaction, based on the results that come from hard work and effort. You will be facing central issues concerned with identity and self-sufficiency, and will emerge from this period as a stronger and more self-reliant person.

Emotions

Moon In Sagittarius

PROFESSIONAL - EMOTIONS: Expand emotional horizons

Professionally you need a working life which offers plenty of freedom and the opportunity to expand your horizons, especially if this gives you the opportunity to travel internationally. You also have strong cultural interests. Repetitive work bores you. You are an exciting person to be together with, and you create a stimulating mental atmosphere with your outspokenness and direct way of saying things. It is important to realise however, that you are rather oblivious to the sensitivities of other people. A little tact would go a long way. You thirst for knowledge and understanding, and thrive in an intellectually nourishing environment. At the same time you can be rather vociferous; you are passionately moved by injustice and quick to defend those who have been wronged.

PERSONAL - EMOTIONS: Expand emotional horizons

You are a freedom-loving person, who does not take kindly to any form of emotional limitation in your personal relationships. You are inspired by wide horizons, and this will lead to a good deal of travel in your life, or a drive to absorb the culture of the world through the media. This may result in a period of time spent travelling or living abroad. Some of the great difficulties in your life arise when circumstances force you to accept limitations on your freedom and the need to form stable emotional bonds. Major transformations also happen in connection with disillusion when you outgrow old beliefs and convictions, as you most surely will. You need intellectually challenging partnerships, but things would function better if you avoided strident discussions.

Moon In 11th House

PROFESSIONAL - EMOTIONS: Social security

You have a professional talent for working with people in groups, especially if this involves caring or humanitarian projects. You feel at home in the crowd, and career satisfaction comes when you have a sense of belonging to the people you work with, and know that they also appreciate you. You can become quite attached to pet projects and have some difficulty letting go of the reins when other people take over. You are passionately attached to idealistic principles as regards the treatment of special groups in society. You may also be interested in consciousness development in groups and have a talent for working with emotional problems in untraditional environments.

PERSONAL - EMOTIONS: Social security

You form very strong bonds to your friends and are extremely

sensitive to how they treat you. You are both caring and concerned as regards their personal development, and easily hurt if they let you down in any way. You need to belong to a group, and your experiences in this area are strongly influenced by your school years. You tend to become too attached to a particular friend at this time, and this can bring problems when you both develop the need for change. During the course of your life you learn to develop a greater emotional detachment, so that you are not so easily hurt or disappointed by others. You may be over-sensitive as regards your social position.

Moon Sesquisquare Uranus

This aspect is extremely powerful in your horoscope; every action you take will be coloured by this energy.

As there is tension between these two planetary influences in your chart, it will be very difficult for you to achieve the promised beneficial results before the age of 30.

PROFESSIONAL - EMOTIONS: Unpredictability

You are something of a gipsy, and this means you can adjust to extremely unusual professional environments. You would thrive in a job in a foreign country for example - the more exotic the better. You are well-suited to working with people who are alienated from society in some way, especially if they come from a different culture. On the other hand you function very badly in a conventional place of work, where the same functions have to be performed day in, day out. You have a very low threshold for boredom, so you are suited to a job which brings exciting changes and variation during the course of the day - preferably meeting people. You have an advanced intuition and very sensitive antenna - this may give you some talents in the New Age sphere.

PERSONAL - EMOTIONS: Unpredictability

You do not have conventional desires as far as domestic harmony is concerned. In your childhood there were many unsettling influences and a general atmosphere of unpredictability, excitement or stress. You need to feel that something is happening around you. This means that you can get very restless in relationships, and if you feel bored - and you often do - then you start getting provocative. You are best suited to relationships which keep you occupied with new daily challenges - and you have a strong need to express your emotional energy in group scenarios. Your partner will not be able to satisfy your need for stimulation on his or her own. You thrive in unusual domestic relationships - for example communal living, flat-sharing or residence abroad. For partnership to function satisfactorily it is essential that you stop distancing yourself emotionally - this gives the impression that you do not care for your loved one.

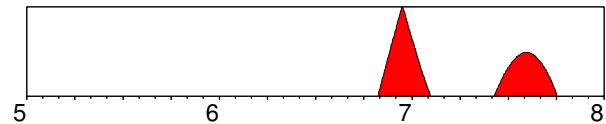
EMOTIONS - EMOTIONS: Unpredictability

Extraordinary circumstances regarding your relationship to your family - particularly your mother - and your general upbringing, have evoked a very detached emotional attitude in you. In all probability your relationship to your mother was characterised by a sense of equality or of friendship, rather than traditional patterns of dependence. From one point of view you were never allowed to feel a natural dependence and you protected yourself by developing detachment, but from another point of view you rejected your mother whenever she tried to assume the traditional maternal role. There may also have been an element of unpredictability about your mother's behaviour - a situation in which you never quite knew what she was going to do next. Later in life you display this inherited tendency to detach yourself when encountering emotional challenges. You send the unconscious message that you are quite prepared to leave if

there is going to be too much trouble, and that you can handle your own freedom. Of course you can, but this means that you end up in half-relationships in which you are neither living with, nor quite living without the partner. When you discover that your love of freedom and independence is partly a device to protect you from getting hurt emotionally, you learn to express feelings of commitment with greater warmth, and this in turn creates more security for the partner, who will reciprocate by showing greater commitment.

Jupiter Transiting Conjunction Moon

10/31/2006 -> 10/2/2007



You can expect powerful change in this area, as you learn to integrate the following influence into your life.

PROFESSIONAL - EMOTIONS: Expanding your base

This influence depends very much on how large a role safety and security play in your professional life. If safety is paramount, you will be wanting to expand the foundations of whatever represents security for you now. As this may well be property, you could wish to move into a larger home or business, and indeed it certainly pays to invest in land and buildings now. Providing that you can trust your instincts in these matters, then property acquisition or expansion is favoured.

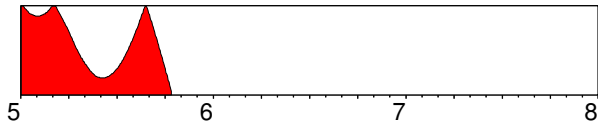
For some people freedom and expansion of horizons will be more important than security. The urge to investigate foreign countries - their people and culture - can play an important role in your career now. Trust in your hunches - your intuitive powers are at their highest in this period, and you have the enthusiasm to take on any challenge. You may however find that your interests lie outside the professional sphere. This is a higher-charged period for you emotionally, so you will probably also want to expend your energies on domestic or family matters.

PERSONAL - EMOTIONS: Expanding your base

This is a period when your feelings and emotions exert a tremendous power in your life. Hopes and dreams about the future will be a driving force inspiring you to take action. Generally speaking you should have a degree of luck and good fortune in attaining your greatest dreams at this time. This is probably a natural consequence of the enthusiasm you invest in all matters. You can expect an expansion of your horizons and a deepening of your capacity to show feeling. You learn something of the mystery of life, and it gives a new meaning to your existence. You can be strongly inspired by a future vision connected with domestic happiness, a home or children. There is, however, a tendency to go overboard. If you are hoping for the fulfilment of emotional dreams, so many opportunities can arise that you simply cannot make a choice. Furthermore your emotional suggestibility is at its highest - you believe what you want to believe. Whatever the concrete results - if any - of this period, you will come into deep contact with your emotional power and gain rewarding new insights.

Jupiter Transiting Conjunction MC

1/1/2005 -> 10/13/2005



You can expect powerful change in this area, as you learn to integrate the following influence into your life.

PROFESSIONAL - GOALS: Room at the top

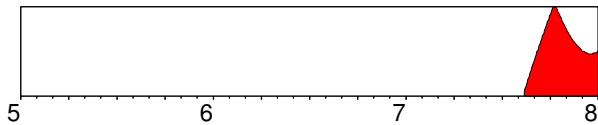
You are now entering a phase in which you need to capitalise on your intellectual talents and your connections with influential people, and go for your professional goals. The time to learn is over, so now you have to take a risk and demand something of yourself or your superiors. It is better to aim high than low. You should be able to integrate your knowledge or counselling abilities into your career. If you are not satisfied with the direction your career is taking, change it.

PERSONAL - GOALS: Room at the top

You can expect an expansion of personal responsibilities at this time, so you have to get organised both professionally and personally to cope well. You should be blessed by a positive attitude and faith in the future, and this in turn should lead to a sense of satisfaction and success. Understanding parental responsibility can be an important factor in your development now.

Saturn Transiting Square Moon

8/14/2007 -> 12/31/2007



This is a time of tension and dramatic change which may be most apparent in your domestic life, or in your career. Use the time to make much-needed changes.

PROFESSIONAL - VALUES: Emotional self-sufficiency

Issues of economic and job security become very pressing at this time, and you will feel a strong drive to overcome any weaknesses in this area. You can however expect a lot of difficulties, especially if you indulge immature expectations, or rely too much on others. Childish behaviour gets you nowhere now, and if you do not have conscious control over your emotional reactions you can expect to be unpopular.

The atmosphere in your working environment may be rather heavy now - perhaps because of an elder woman who is trying to assert her authority. The more mature you are, the better you can handle trying situations. You have to know when to set limits, whilst still living up to your responsibilities. You can develop the self-discipline and patience to work with people in difficulty, if you choose to.

PERSONAL - EMOTIONS: Emotional self-sufficiency

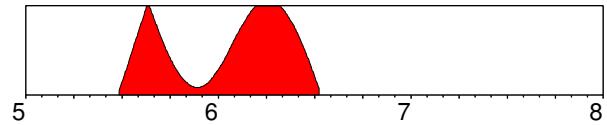
During this challenging emotional period you will become more mature and self-sufficient. But this is not normally a happy time - partly because safety and security is no longer what it was. You have to spend time building more secure foundations for your life, and you cannot expect anyone else to be very supportive during this time. It is up to you to shoulder responsibilities uncomplainingly and with dignity.

Time can drag on now because you have to spend more time

attending to everyday details and getting things to function on a practical level. On an inner level you are confronted with the need to change or control unconscious emotions and habits. It is no use allowing your temperament, your jealousy, your distance or your stubbornness to get in the way of a rewarding relationship. The time demands emotional self-improvement, so stop making excuses and start working on yourself.

Saturn Transiting Trine Moon

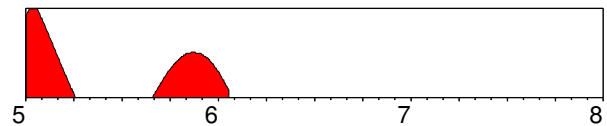
6/27/2005 -> 7/11/2006



Please read page 7: "Saturn Transiting Square Moon"

Uranus Transiting Square Moon

1/1/2005 -> 1/20/2006



This is a time of tension and dramatic change which may be most apparent in your domestic life, or in your career. Use the time to make much-needed changes.

PROFESSIONAL - EMOTIONS: Change of environment

This is an exciting and perhaps disturbing period because of radical and unexpected changes in your environment. You cannot expect to feel very secure now - the period requires flexibility as regards working habits and place of work. There may be more travel than usual, and there is a chance of greater international commitment, perhaps involving contact with people from exotic cultures. A growing awareness of social issues may inspire you to work with people who are displaced in society in some way, either as social outsiders or refugees.

As this is a time of considerable emotional awakening and awareness, you can acquire a greater knowledge and consciousness of unconscious processes. If you can integrate this awareness into your work, you may find yourself applying newly-discovered talents for dealing with people - particularly as far as consciousness-raising activities are concerned. There is a strong likelihood of career involvement with groups and with collective ventures now.

PERSONAL - EMOTIONS: Change of environment

This is a time of emotional restlessness and unpredictable change, which will strongly affect the environment you live in. Events can arise which shake you up emotionally and force you to gain greater insight into the unconscious mind and habitual emotional reactions. Greater awareness and objectivity is required when dealing with your feelings now. In reality there is a growing need for change, and this is going to affect family life. There is a strong urge to live a gipsy-like existence - and indeed you may find yourself moving around or in temporary accommodation for a while.

If you are thinking of moving, this is the time when it will happen. It is fine to be somewhat impulsive now, just as long as you get free of environments which no longer mean much to you. It is however not an especially good time for settling down. It is better to be on the move, to travel and to discover new places, countries and people, without allowing yourself to be tied down for too long. You may strike up an important attachment to an untraditional

group now, and you will be attracted to people who live on the fringe of society.

Mentality

Mercury In Aquarius

PROFESSIONAL - MENTALITY: Inspire renewal

You are a clear thinking person, very open to new and exciting ideas, though you can be rather fixed in your opinions. There may also be an inventive talent or some special and unique interest - perhaps connected with awareness and consciousness. You embrace strong views which run contrary to the accepted norm - you feel it is your duty to shake up the ideas of others and create renewal around you. Whilst this can be refreshing for all concerned, you run the risk of being alienated or misunderstood. You work well in a group environment in which there is a lot of excitement and stimulating people. You are a force for renewal, and have the ability to integrate new technological developments into your work.

PERSONAL - MENTALITY: Inspire renewal

Mental stimulation is very important for you, and you thrive on contact with others and the exchange of exciting ideas. You pride yourself on your openness and tolerance, although when it comes down to it you can't tolerate intolerant people. You are probably strongly motivated by social issues and tend to have unshakeable convictions in this respect. You can actually be rather stubborn in your beliefs, though you will be loath to admit this. You can get a kick out of being provocative, and will often be so if you start getting bored. Other things being equal you will have a number of important friendships with people from very different environments, as you have a taste for exotic and foreign influences.

Mercury In 2nd House

PROFESSIONAL - MENTALITY: Develop mental resources

Your ability to communicate and inform, and perhaps a certain talent for wheeling and dealing, are great economic assets to you. You have an appreciation of the value of material things, desire to learn how money makes the world go round, and are quick to make contacts and reap financial benefits from them. You would thrive in a job in which your knowledge and handling of information, and your ability to build up a network of contacts are utilised. You may have a particular talent for the banking world as you are quick to assimilate news and information which is relevant for the constant changes in this area. You earn money through your intelligence, through teaching or through travel.

PERSONAL - MENTALITY: Develop mental resources

You have strong convictions, which are often based on the solid truths of the market. You are rarely motivated to show interest in insights which cannot be converted to practical advantage. However major economic changes in your life can lead to reinvestment of your values in the resources of the mind, psychological interests etc. Financial complications can arise in connection with brothers, sisters and neighbours, and early experiences in these areas will already have proved formative as regards your values in life today. You tend to worry a lot about the material aspects of life, and are constantly coming up with new ideas about how to manage your economy.

Mercury Square Mars

Though not especially strong, you will be able to feel the influence of this aspect under many circumstances.

As there is tension between these two planetary influences in

your chart, it will be very difficult for you to achieve the promised beneficial results before the age of 30.

PROFESSIONAL - MENTALITY: Sharpness

You have an extremely acute mind, and can generally come to a decision far faster than the average person. You are quick to take action and enjoy the pleasure of outsmarting your competitors. You enjoy the thrill of mental combat. However you often cut corners, and your methods can be questionable. Your brusque manner can evoke considerable hostility in your place of work, so if you find yourself constantly getting into arguments or finding people irritating, you can be quite sure it has something to do with your behaviour. Perhaps you have a tendency to barge in or interrupt conversations, perhaps you speak in too harsh a manner or do not listen enough to others. It pays to plan more patiently, and think twice before you make your opinion known. You would function well in jobs which require tough negotiations or an aggressive verbal style. You have plenty of energy too, and like to travel and meet people. You are a go-getter.

PERSONAL - MENTALITY: Sharpness

You get into too many arguments, and rarely consider the idea that you may be wrong. This truculent manner probably stems from conflicts in childhood with brothers, or perhaps your father. You worked out then that the best means of defence was offence. Yet troubles arise later in life because your frank and direct manner makes people feel that you are offensive. You don't always have to tell people what is on your mind. You hate to be bossed around or told what to do, so make an effort not to act in this way with others. Give them time to express themselves without interrupting, and resolve to stop criticism and arguments. Women with this aspect are often attracted to rather sharp men who may have questionable morals, or be rather argumentative types, although this is a projection mechanism based on inner conflicts. Men tend to retain adolescent qualities and act at times as if they know everything.

For both sexes it is important to slow down, otherwise the nervous system can be adversely affected. When you channel your enormous energy into creative, fun projects, you can achieve a great deal.

Mercury Trine Jupiter

This aspect is extremely powerful in your horoscope, and will be a major feature of your character.

Please remember when reading this section, that the harmonious nature of this contact means that you can use the energies creatively, for the most part without negative effects.

PROFESSIONAL - MENTALITY: Disseminating information

One of your great professional assets is your intellectual curiosity and interest in communication and information. You can be something of a perpetual student, accumulating knowledge and insight for a rainy day. These intellectual talents bring you success in fields which require study, writing, meeting people, travel and generally exchanging ideas. You have excellent teaching talents, because you both have the capacity to concentrate on details, and at the same time can draw wide-ranging conclusions. You can maintain an overall perspective, even when drowned in facts and figures. You can also be extremely persuasive, and this can give a talent for sales. People can come to you for advice and information. You are also suited to a position in an office, where you have access to phones and faxes, computers etc. You may be rather restless, so you need to work in a position in which you work with a whole spectrum of daily tasks, or in a situation in which you meet a variety of different people, perhaps whilst travelling around.

PERSONAL - MENTALITY: Disseminating information
Gaining intelligence is a strong motivating factor in your life. Attending courses and studies, learning languages, travelling and meeting people, are all important activities for you, because they give you the opportunity to train and expand your mind. A foreign language may play an important role in your life - you certainly have the capacity to master more than one language. You can be witty and a mine of information. On the other hand you may feel a strong need to impose your ideas and opinions on others. You hate to be belittled mentally, and you may compensate for this by becoming argumentative, or by dutifully trying to enlighten people about what the truth is. It is better to fulfil this need in some job for which you get paid - rather than tire your partner with your constant need to explain and inform. It is wisest to give your opinion only when it is consciously sought by others.

THE MIND - MENTALITY: Disseminating information
Brothers or sisters may have played a powerful role in your mental development as a child. Perhaps you felt unintelligent in contrast to a sibling - or there may still linger in you a sense of injustice as regards how much attention a brother or sister received in contrast to yourself. Contact with teachers and other children at school will also have been very formative, inspiring you to do your utmost to compete mentally. Whatever the circumstances you do not like being ignored. There is a deep need to make your opinions heard, so you have a tendency now to be rather voluble. If you are not careful, your forceful opinions can have the opposite effect to what you desire. You need to be heard and understood, and you need to communicate your own perceptions about fairness and justice. However, unless you cultivate a sensitivity to mental response, you will never get the message across. Ask yourself: are you getting the results you want from your communication? Perhaps what you consider important, is not so important to others. Choose your audience carefully, and ensure that you get feedback.

Mercury Opposition Pluto

You will often feel the influence of this aspect, though stronger influences may predominate in other areas of your chart. You will have to work hard to attain the beneficial results of this aspect. Partnership matters are central for your gaining an understanding of the principles involved and integrating them in your nature.

PROFESSIONAL - MENTALITY: From secrecy to openness
You have an investigative mind and considerable talent for finding out about hidden issues and analysing things in depth. You are also good at keeping secrets. As such you are a natural detective and are able to find the root cause of problems. This is a useful talent in psychological matters, when working with computers or anything requiring fanatical attention to detail. There is an ability to tap hidden sources of information. In your professional life, however, you are inclined to be suspicious, fearing that important information is being kept from you. People can feel that you interrogate them, and they tend to clam up. Sometimes you express yourself far too forcefully and do not allow people to come with their views. Success comes when you overcome communication problems connected with anxiety.

PERSONAL - MENTALITY: From secrecy to openness
You are a rather secretive person; you think hard and deeply, and sometimes you are plagued by compulsive ideas and fears. Much of this is a result of childhood anxiety connected with lies, secrets or lack of communication. Because you do not always let on what you are thinking, you can easily be misunderstood. Put people's

minds at rest by clearing up these misunderstandings and strive to be as open as circumstances permit. When your feelings are hurt you can be silent for long periods. And when you are insecure, you tend to be suspicious of your partner. Harmony in relationships comes when you resist the tendency to argue for hours at a time, or to use silence as a weapon, and instead learn to be open and trusting.

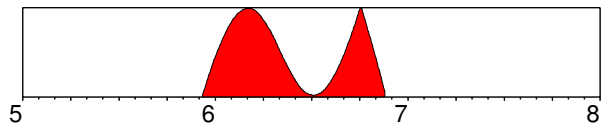
THE MIND - MENTALITY: From secrecy to openness
As a child you were deeply affected by secretive behaviour on the part of parents or siblings. You had a strong intuition that important facts were kept secret from you - you may indeed have been lied to in connected with some profound truth. Later in life you may well have discovered the details of what has been kept from you - this can for example have something to do with secret connections your parents had - for example half-brothers or sisters you never knew about. There is a strong possibility that a family member was extremely non-communicative or silent in a rather disturbing manner. Perhaps you too felt that it was difficult to make your voice heard. Whatever the actual circumstances, the result of this is a gnawing doubt concerning the truth of what you hear, so that you are often driven to deeply question the motives or actions of others. Sometimes your tendency to cross-examine will drive a partner behind a protective wall of silence for long periods of time; sometimes you too will clam up as a way of applying pressure in a relationship. As you overcome these difficulties you learn to relax more in communication matters. By giving people the time and space to respond to your questions without anxiety, and by allowing people to have their secrets if they so wish, you can attain peace of mind. Ultimately your life will be enriched by the discovery of quite unique mental abilities on a deep psychological level.

Mercury Trine MC

This aspect is extremely powerful in your horoscope; every action you take will be coloured by this energy. Please bear in mind that the contact between these planets is harmonious, which means that you will rarely be troubled by their negative influences. They represent a resource you can draw from.

PROFESSIONAL - GOALS: The ideas person
It is important for you to integrate your mental faculties in your career. Teaching, dealing with communication, writing, meeting people and generally creating contacts are all part of the employment spectrum for you. An inner restlessness will ensure that you either seek a career with a variety of interesting functions, or change jobs at regular intervals. The important thing for you is to get your ideas across in society.

PERSONAL - GOALS: The ideas person
You like to have your finger in a number of pies, and although this can be manifested as versatility, you have a tendency to be easily distracted from your personal goals. Changes of views and a restless nature may mean that you move often. A stimulating atmosphere - both at home and in your work - is a prerequisite for personal satisfaction. Children, chatting and play can keep you happy all day.

Jupiter Transiting Square Mercury**12/9/2005 -> 11/19/2006**

This is a time of tension and dramatic change which may be most apparent in your domestic life, or in your career. Use the time to make much-needed changes.

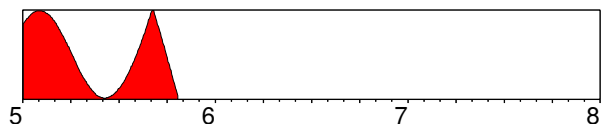
PROFESSIONAL - MENTALITY: Expanding contact

The effect of this influence depends very much on how you employ your mental talents in your profession. This is the time you should invest in your mental abilities. Knowledge is power, so it could pay for you to go on courses, meet people and expand your sphere of influence. You can expect an increase in the time you spend travelling now, so try to streamline this area of your life. You should be doing more to enlarge your network of contacts, so make sure you are available through telephone, fax or computer. You will talk more, travel more and write more. If you have any dreams as regards writing or getting some message across to the public, now is the time to go for it, as there is a strong disposition for success in these matters. This is generally a great time for wheeling and dealing, doing business and capitalising on contacts at home and abroad. Nevertheless you can talk too much and be too intellectually pushy. Take time to listen to the opinions and advice of others - you can make misjudgements if you don't.

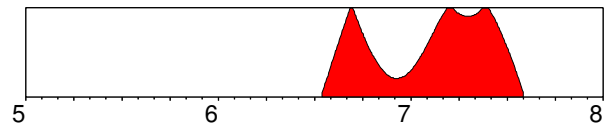
PERSONAL - MENTALITY: Expanding contact

This is a period of expanding intellectual curiosity which can be reflected in many areas of your life. You will probably devour books and TV programmes at this time to satisfy your urge to acquire knowledge. It will also be an important process for you now to weave all the threads of information that you gather into a whole piece of cloth, so that you can see a meaningful pattern in all the details that surround you.

This is a time to be on the move and to allow your mind to be fertilised by contact with a wide variety of people with different views on life. You should be bubbling with ideas, so you have to get them down on paper or out to a broader public. Although this is generally an optimistic period, there is a risk of losing your sense of proportion, particularly if you are inclined to worry or fantasy. Knowing the power of the mind to create the future, you would be well-advised to guide your thoughts into constructive channels.

Jupiter Transiting Trine Mercury**1/1/2005 -> 10/21/2005**

Please read page 10: "Jupiter Transiting Square Mercury"

Saturn Transiting Opposition Mercury**7/17/2006 -> 8/2/2007**

This extremely strong influence can bring change, dilemmas or separation. The likelihood of travel in connection with these issues is strong.

PROFESSIONAL - MENTALITY: Mental self-discipline

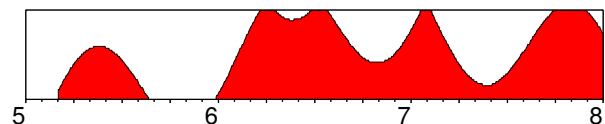
You are challenged now to get organised and to administrate your time sensibly. There is a particularly emphasis on improving and consolidating your talents. Long-term plans for training courses or intellectual improvement can be put into effect. Writing or communication blockages must be overcome. You can develop the necessary mental discipline now to attain your goals. Expect communication problems, and expect plans or travel arrangements to be delayed. There needs to be far more attention to detail. Attend to the small print when signing contracts.

Learning to economise with your words and messages is an essential lesson for this period. How can you express yourself most effectively in the shortest possible time? If you develop the self-discipline to organise your daily life so that you can attend to mental challenges, you can expect very satisfactory long-term results. There is a strong emphasis on business matters at this time - but many minor irritations. Take one problem at a time, be patient, and solve challenges with long-term strategies.

PERSONAL - MENTALITY: Mental self-discipline

This is a period in which you have more than the average amount of worries. There are many practical issues to be solved, and there is no other alternative than to get down to each issue and concentrate on one thing at a time. It is important to organise your time more efficiently. Problems particularly arise in the area of communication. This is the time to address these issues and find practical solutions.

If you feel unsure of your intellectual abilities or that you lack the necessary training to do what you want, then you should make a commitment to improve now. You need to spend more time talking and listening to your partner - there are issues which need to be solved. Problems can also arise in connection with sibling relationships or neighbours, and if you are patient and diligent you can find long-term solutions. Discipline your daily life and realise creative dreams.

Neptune Transiting Conjunction Mercury**3/4/2005 -> 12/31/2007**

Major changes will occur in the area of your life described here and you will integrate new personal behaviour and attitudes in your life.

PROFESSIONAL - MENTALITY: Mental sensitivity

This is a time when you should be able to realise your creative mental potential. If you have ambitions in connection with film, poetry, writing or any unusual forms of communication, you should do what you can to encourage the flow. You are capable of channelling subtle information and ideas now. If you are

considering any kind of intellectual training, ensure that it inspires you. If you embark on some long-term study which does not interest you sufficiently, you will regret it later. You need intuitive and spiritual inspiration, so avoid business or secretarial courses which require hours of learning by rote.

Although this period is excellent for creativity, you cannot trust all the signals you receive at this time. This is partly connected with your uncritical acceptance of information you want to be true - which means you can easily be confused by a smokescreen - and partly because of a tendency to meet people who can't exactly be relied on at this time. Bear this in mind if you are considering signing contracts or making binding agreements. In many ways it is a good period to give material ambitions a rest and seek to enrich yourself mentally.

PERSONAL - MENTALITY: Mental sensitivity

During this period of enhanced mental sensitivity, you can learn many things about the way the mind functions and the nature of reality. The phrase "It's all in the mind" takes on an entirely new meaning at this time. By learning to channel your thoughts, you can alter the way you experience reality. However this period is characterised by a feeling of pronounced mental dissatisfaction - a sense that you cannot express exactly what you think and feel, and a feeling that you are not truly being listened to.

A sense of being misunderstood can increase the feeling of loneliness and isolation in your relationships. Avoid expressing disappointment in connection with this, as this will only increase the confusion of others. In reality you are being challenged to find new ways of reaching people. Bearing in mind that scientific studies have shown that communication is 55% body language, 38% voice tone and only 7% words, strive to tune in to the factors in communication which really have a deep influence. You would benefit through attending courses connected with communication at this time.

Values

Venus In Aquarius

PROFESSIONAL - VALUES: Love of freedom

You are a very socially-oriented person and you are suited to professional work which involves dealing with people - particularly specific groups in a social context. You work best in a team, and you are good at mobilising team spirit, even though you also can feel that the rest of the team do not live up to your ideals. You have strong principles regarding fairness, and as such you are a genuine humanitarian, reaching out to people from all walks of life. This social consciousness is best used in a profession where you can manifest a humanitarian spirit - especially if this also involves international issues. You are motivated more by ideals, than by material interests or personal ambitions.

PERSONAL - VALUES: Love of freedom

Friendship is holy for you, and in your personal relationships it is more important to be friends and have shared ideals, than to be consumed by passion. You cannot thrive in a relationship in which you are smothered. Sometimes however you give the impression that you are cool and detached in love, and this may alienate your partner. Men with this position will be attracted to unconventional women, perhaps from another country or social group. Women tend to hold the banner of liberation high. Principles of equality form the basis for lasting attachments. Romantic meetings tend to arise under exotic circumstances and the relationship will often function best when there are frequent partings because of outer circumstances. It is best for the relationship when there is an element of unpredictability.

Venus In 2nd House

PROFESSIONAL - VALUES: Satisfaction

You are a person who truly values personal relationships and beautiful things. Professionally you have a talent for dealing with these issues. There may be financial gain in dealing with aesthetically pleasing objects or the world of finance. Your style, judgement and grace are major assets in your career. Other things being equal you will accrue a good deal of money and surround yourself with many objects of value in your life. Your appearance, or a pleasing nature will be important resources in your professional life, and you are often able to gain favours through your ability to make other people feel good. It is crucial for you to feel that you are paid fairly for what you do, and you know how much you are worth. In the same way you are able to give other people a sense of their own worth.

PERSONAL - VALUES: Satisfaction

You exhibit a very warm personality and are capable of creating a stable and secure environment for your loved ones. However you prefer to live the good life, and do not like to deny yourself the pleasures that material things can bring. To feel good, you often resort to buying yourself presents. Your strong attachments and desires - both materially and romantically - can create financial problems. On the other hand you tend to be materially fortunate. In your love life you demand tangible expressions of love - the more expensive the better. You too can be generous, both materially and emotionally. One of your greatest talents is your ability to appreciate the bounties of Nature. Financial issues are important in your relationships.

Venus Conjunction Sun

Please read page 4: "Sun Conjunction Venus"

Venus Square Saturn

This aspect is extremely powerful in your horoscope, and will be a major feature of your character.

There will be great difficulty in integrating these two planetary influences, and the promised harmonious results will only arise after you have expended time and effort.

PROFESSIONAL - VALUES: Formality

You have a strong sense of responsibility regarding your professional relationships, and you value trust and stability most of all. You can therefore function well in long-term business partnerships, and you are especially good at relating to the public in a friendly, though formal manner. You have a pleasing diplomatic nature and a fine sense of protocol. Job security and a strong economy are important to you, and other things being equal you are very careful with money. This may give talents connected with the financial world, banking, investment etc. Women with this aspect can be especially ambitious and willing to endure considerable hardship to get on in a career. In general there is more emphasis on the professional life than on the personal. As time goes by you grow to learn exactly what you are worth, and expect to get paid for it.

PERSONAL - VALUES: Formality

It is unlikely that you will be completely fulfilled in your love relationships during the first 30 years of your life. You may have a rather low sense of self-worth and a correspondingly low threshold of expectation as far as romance is concerned. You prefer to play it safe, having burned your fingers in your young days. You may be attracted to an older partner, who can provide structure and security in a relationship, although security of this kind can prove restrictive in the long run. Intimacy does not come easily to you because of a strong fear of rejection. You maintain a

cool facade as a protective measure, though this only makes your world a little colder. As you get older you learn that it pays to be a little more vulnerable, it pays to take a risk with your emotions. First you need to build up a strong sense of personal self-worth. Then by showing your own feelings without demanding exaggerated demonstrations of love in return, you can create a safe space for the mutual exchange of love.

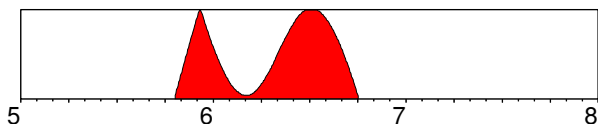
LOVE - VALUES: Formality

Early in your life you experienced love as conditional on your behaviour. Love was measured out to you on a basis of whether you deserved it or not - thus you now often feel undeserving. Perhaps you felt that there was little love between your parents, perhaps you had an older sister who made life difficult, and very probably around the age of 15 you may have had an unhappy love affair which ended painfully. As a result you became very cautious about expressing your feelings. You may choose a relationship with someone you can be sure of, but do not love, to avoid being hurt again. Or you may miss romantic opportunities because you wait too long not daring to show your feelings. When you do fall in love you become initially very open and vulnerable and extremely hungry for demonstrations of affection. Immature romantic demands can lead to rejection because no individual can satisfy your deep hunger for love. However if you feel rejected you react by becoming cold and remote, thus creating even more distance between you and your loved one. Men with this pattern have difficulty showing their feelings, though they may be quite effective at making formal romantic gestures. This emotional restraint evokes the feeling in the female partner that she is not loved, and as time goes by she will feel unattractive and wilt like a plant without water. Women with this aspect have difficulty believing that they are attractive, no matter how good-looking they may be. Fear of rejection prevents them from giving a spontaneous display of emotion.

These relationship difficulties can be solved by patient work over a period of time. By lowering expectations, by giving instead of demanding, by resolutely refusing to blame the partner for personal unhappiness, by commitment and loyalty, you can develop a relationship which ultimately becomes warm and fruitful, especially in the latter part of life.

Jupiter Transiting Square Venus

10/21/2005 -> 10/2/2006



Major irritation factors arise as a result of this influence, yet if you use this period to initiate dynamic change you will be able to make dramatic progress in your life.

PROFESSIONAL - VALUES: Blessings

If you are the lucky type, you could not have a better period than this one. This is a time when influential people - particularly women - can guide you towards success, and when your economic resources have every chance of expansion. Success comes in particular in the cultural, intellectual or artistic field, though there is also a reasonable chance of business expansion also. Matters of fairness and justice will cause concern at this time.

It is more important to enjoy life than just work hard at this time - if you can't appreciate life's pleasures now, when can you? What are your true values and goals in your career? This is the time to include them in your plans for the future. However, if you indulge your pleasures too much, this can be an expensive time. You are

very vulnerable morally now, and affairs of the heart can lead you into a costly blind alley. Don't cut corners to gain easy profit, a questionable gain now can lead to long-term loss. You are easily seduced.

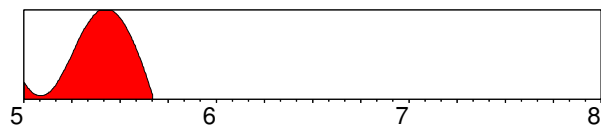
PERSONAL - VALUES: Blessings

This is a romantic period par excellence, so you can expect affairs of the heart to have priority now. If you are in a relationship, your need to give and receive love will be very strong, so ensure that you indulge your emotional and erotic desires. This is a time when the power of romantic and sexual attraction is extremely strong, whilst the moral discipline is weak, so it is important to weigh the needs of the heart with other emotional costs. Sometimes it is more important to nourish and indulge the need for love than anything else, sometimes not. Let your ideals about fairness guide you.

It is a great time to travel, and if you are seeking a partner, there is one to be found in foreign climes, or in cultural or intellectual institutions. You are not inclined to fall for anyone for physical reasons alone at this time - you need a partner who can stimulate you intellectually, and expand your understanding of life and its pleasures. If you are interested in creativity, this can be a wonderful period because you gain insight and understanding of the aesthetic forces of Nature, seeing the beauty inherent in all things, and experiencing that beauty as a manifestation of truth in some way.

Jupiter Transiting Trine Venus

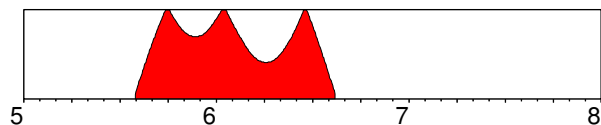
1/1/2005 -> 9/2/2005



Please read page 12: "Jupiter Transiting Square Venus"

Saturn Transiting Opposition Venus

7/31/2005 -> 8/14/2006



Very strong tensions will occur in your life in the following area. Other people will impinge on your life and force you to adjust.

PROFESSIONAL - VALUES: Building self-worth

Economical issues come to the fore now, and you will probably find yourself having to work long and hard, perhaps without getting the financial rewards you would like. It pays to economise and save now, or to make very secure investments. By careful economical planning you can create the foundations for future growth, although short-term success is unlikely. Working on professional relationships may be necessary now, and you could be asked to make a long-term commitment.

It would be to your advantage to pay more attention to subtle influences on your career, such as your appearance and personal style. If you want to open doors which have been closed for you until now, learn for example the finer points of diplomacy and overcome clumsiness or shyness in dealing with people. An understanding and appreciation of taste and style can be the keys to much desired status improvements.

PERSONAL - VALUES: Building self-worth

You can expect many challenges in your personal relationships

now. How great is your commitment? Can your affections stand the test of time? No trivial relationship can survive this period, simply because you feel that you do not have the time to waste on romantic attentions that are not genuine. Those people who are in long-term relationships will go through a testing phase - the old clichés and protestations of love will not suffice any more. A recommitment may be necessary and more time should be spent together.

Love and romance do not come easily now - and indeed it is better to be alone developing inner self-worth and reliance, rather than seeking confirmation from love affairs. Assurance of love from others will definitely not be forthcoming now, so it is not worth wasting time on lukewarm relationships - you would be better off by yourself. It is a time for giving, but not for receiving. Contentment comes from an appreciation of quality, not quantity, and from what you have got, rather than what you have not got. This also applies to material things - it is better to do without, rather than long for things which in the last analysis will not truly satisfy you.

Drives

Mars In Scorpio

PROFESSIONAL - DRIVES: Cut through to the essence
You have deep energy reserves at your disposal, and there is the capacity to work under considerable pressure - indeed crisis situations can evoke outstanding qualities in you. You work in an intense and determined manner, and are capable of sticking to a project over a long period of time - you can even become obsessed by your work. There are special talents with regard to analysing a situation in detail, and you have an uncanny instinct for getting to the source of a problem. If a difficult decision has to be made, you can do it, even if it might mean telling someone an unpleasant truth or getting rid of someone who is superfluous. In some cases there can be a reputation for being ruthless, but this quality is often necessary if one feels limited by something which has outlived its usefulness. You have the capacity for helping others in crisis - especially on a psychological level.

PERSONAL - DRIVES: Cut through to the essence
You are a dangerous person when cornered, even though you may not give this impression at first glance. Other people sense your power and can feel rather nervous in your presence. Many passions rage in your centre, and you are very sensitive to situations which undermine your prestige. It would be an advantage for you if you could cultivate a more relaxed attitude to competition. Men with this position of Mars have a magnetic aura and powerful sexual drives. They like to exert a subdued power in love relationships. Women also exude an aura of power and sexuality, and are drawn to a man with an aura of mystery or secrecy. Jealousy - and even revenge - can be powerful unconscious factors in relationships. Both sexes hate to feel powerless and expend a lot of energy maintaining control in any given situation. During your life emotional negativities will be transformed through powerful psychological upheavals, and you can become a silent force for good in your environment.

Mars In 11th House

PROFESSIONAL - DRIVE: Solidarity
You are dynamically inspired by social causes and can find professional satisfaction working motivating groups in one way or another. You are a reformer by nature and are prepared to take on the necessary confrontation to get your ideas accepted. Your motivations as a reformer are not selfish; you are prepared to be in the vanguard working for collective interests. You have very

little respect for restrictive social norms and prefer to be direct in your dealings with people, therefore you function best when you are a spokesman of some sort, or when you carry the banner of a social or political movement. You may have very strong ideological principles, and you are prepared to fight for them.

PERSONAL - DRIVES: Social agitation
You are very interested and involved with your friends; fiercely loyal, you are prepared to fight shoulder-to-shoulder with your brothers and sisters for a common cause. However many troubles arise in your social circle - perhaps because you have a tendency to speak your mind to a provocative degree, perhaps because you are a bit of an outsider. Not one to take social niceties into consideration, you tend to stir up discontent in groups. You are also attracted to rough and ready people who you can trust for their honesty and directness. You have the ability to take on a dynamic role in a group, perhaps connected with sport or outgoing enterprises. Generally speaking you will thrive in the company of men. Women with this influence may often be sexually attracted to a friend; men may prefer to be with amongst other menfriends as they can feel too limited by intimate partnership.

Mars Square Mercury

Please read page 8: "Mercury Square Mars"

Mars Trine Uranus

This aspect is extremely powerful in your horoscope; it will dominate many areas of your life. Because there is a good aspect between these two planets, you can expect the positive consequences to be strong and very creative, and the negative consequences minimal.

PROFESSIONAL - DRIVE: Experimentation
You are an extremely dynamic person and you can perform tasks in a flurry of activity in half the time ordinary mortals take. You need excitement and originality in your work, and you do your best work when a deadline is threatening. When you decide to act, you strike like lightning. However you are best at working in short bursts of energy. Longer periods of activity tire and bore you. You have talent for working with technical matters - for example engineering, computers etc. You may also have a taste for more untraditional work, perhaps connected with New Age fields, consciousness-raising etc. The essential ingredient is freedom to experiment and learn from your own experiences. You are not very good at working in a team because you can react violently to being told what to do. You hate restrictions and orders and you need to go your own way. Other people may experience you as rebellious and you have a tendency to get into trouble with authorities. You are something of a pioneer, and may embark on dangerous travels to foreign lands.

PERSONAL - DRIVE: Experimentation
You are an extremely unpredictable person, and your fear of being limited by relationships makes you demonstratively aggressive when duty is required of you. Men with this aspect give their partner the impression that they can pack their bag and go at any time - in actual fact unpredictability is used as a threat to get their own way. Women with this aspect are attracted to unusual men, particularly from abroad or from some unique environment, - men who can promise excitement and freedom. There is a tendency to be enormously provocative and this can lead to explosive conflicts. This satisfies the ever-present craving for excitement in one way or another. To have peace in a relationship it is important to have some unusual interest or job which brings challenge and fulfilment. A relationship will not

provide this in any lasting way. If all goes well you are an exciting person to be with, always willing to take a risk or try something new.

SEX & POWER - DRIVE: Experimentation

An untraditional father or brother will have evoked strong ideals of independence and freedom in you. You long for the open horizon and the unpredictable. This may relate to an atmosphere of tension in your home, where you felt - and feared - sudden changes or threats from males. The atmosphere was overcharged in some way. Actually you are born with an innate need to manifest your will in a dramatic way, and it will have been very difficult for your parents to control you. You will have experienced discipline as an unjust attack on your personal integrity, and this makes you even more provocative. With this attitude you will come into a spiral of conflict with authority. You don't want to learn from their experience, you want to learn from your own. If you can understand these rather hidden provocation patterns, you can learn to get on with others, even though you do go your own way. You do not have to be such an outsider. In sexual matters you also have a taste for excitement. Not for you every Saturday when the children are in bed - unless there is an element of unpredictability you can quickly lose interest. Although sex manuals talk of the need for a long period of foreplay, this can actually be tedious for you - with your strong sexual magnetism, why wait?. There may be an interests in advanced sexual techniques and instruments of pleasure. Periods without sex create a strong sexual tension, and there is a tendency for the male to have premature orgasm because of a high level of expectation. Sex for you needs to be a surprise, and it can take place anywhere. The people who established the 5 mile high club probably had Mars/Uranus aspects. In some cases there may be early experiences of danger or the tabu connected with sex, which means you have to recreate a situation of tension to experience release through orgasm. In extreme cases women who have this aspect may be very provocative prior to love-making.

Mars Square Pluto

This aspect is extremely powerful in your horoscope; every action you take will be coloured by this energy. As there is tension between these two planetary influences in your chart, it will be very difficult for you to achieve the promised beneficial results before the age of 30.

PROFESSIONAL - DRIVE: Cutting through decay

This influence has a major effect on your career. In your life you are confronted with the issue of power - and powerlessness. You may not be aware of how forceful you are, and therefore you often encounter confrontations and get involved in power battles. Your strength in this area equips you to deal with crisis situations which other people would rather avoid. Thus you can get involved politically or socially, perhaps in trade union activity or in the corridors of power. Although you have a lot of abilities in this respect you may not find great satisfaction in these areas. You have a good deal of psychological talent, and may find fulfilment in helping people in crisis, or people who have adjustment problems. You may have psychic or healing talents. You work hard and very intensely, often into the late hours, and actually you may have difficulty knowing when to stop. It is important to identify this obsessive quality, otherwise you can drive yourself to collapse. By structuring your working hours, you can avoid exhaustion. Life would be easier for you if you were more relaxed. You are very sensitive to what you consider the misuse of power - this is connected with humiliating situations connected with will and power in childhood. Later in life you run

into similar situations, especially with authoritarian or dominating - even tyrannical - men, and you tend to overreact. This leads to battles of the will which are quite exhausting - even more for others than yourself. These situations are best defused by seeing them in a different light. By clearly showing others the limits you are prepared to accept, and by sticking to them diplomatically, you can win respect and avoid power games. Remember, if your motives are straight, you will attract people who will be straight with you. It is important for you to think positively about others. You are a powerful ally and a dangerous enemy.

PERSONAL - DRIVE: Cutting through decay

You have experienced a number of deep traumas in your childhood through events which may be secret or repressed. This can be linked to the influence of men - particular your father or a brother. Often a stepfather or half-brother plays an important role. Sometimes a sexual theme is involved. You may also have been deeply affected by someone who had a deep psychological problem. In some way your will was totally overridden at some point in your childhood, and you are profoundly affected by the humiliation this incurred. It is also possible that you experienced your father - who was dominating, but weak - being humiliated in some way. Later on, intimate relationships are characterised by great intensity and power games. There is a need for a strong partner who can stand up and fight his or her own battles. Women with this aspect are profoundly attracted to magnetic and powerful men. Such a relationship develops predictably: where the man initially starts as the dominating figure, the woman begins to discover weaknesses as time goes by, and in doing so loses respect. When the relationship ends, the roles have been reversed and the man often ends up in a humiliating position. Men put too much focus on sexuality and the need to demonstrate masculinity. Jealousy and control can be dominating, though concealed, factors in love. The relationship tends to be marred by criticism of weaknesses and bitter discussions over influence. Often therapy can solve difficulties connected with the complex psychological projections involved in this kind of relationship. As time goes by you will discover the benefits of your enormous energy resources and latent power. As a result you stop struggling against imagined power misuse, and simply no longer feel threatened. Deep satisfaction comes from discovering psychological and psychic talents.

SEX & POWER - DRIVE: Cutting through decay

Sexual relationships are an important battlefield for you. The man with this aspect will often demand sex several times a day - or alternatively cultivate an incredible sexual control - and strangely enough this is more because of a need to prove something to himself, than because of true desire. There is a kind of mechanical perfection with the sex act, and a deep obsession with sexual desire and taboos. The man's partner will naturally enough find these demands exhausting, and feel that tenderness is lacking. For a woman, the fear of being powerless makes it extremely difficult for her to surrender to the pleasures of sex. This can lead her to take the initiative in sexual matters, yet paradoxically there will be a secret desire to be rendered totally helpless by a masterful lover. There is a deep need to have a spiritually transforming sexual relationship. This may be possible through some kind of tantric sexual practice, but ultimately happiness in this area is based on a restraint which allows sexual energy to build up over a period of time, and the ability to enjoy passively and surrender.

Mars Sextile N. Node, Mars Trine S. Node

This aspect is extremely powerful in your horoscope, and will be a major feature of your character.

The sextile aspect is favourable, and stimulates your capacity to learn from experience. You can expect the negative effects to be minimal.

PROFESSIONAL - DESTINY: Survival of the fittest

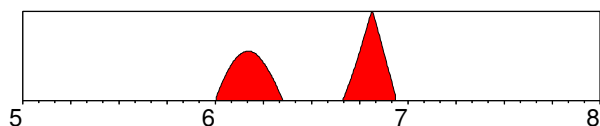
You will often find yourself in the midst of the fray in your professional life, with many struggles as regards asserting yourself in groups. Conflict will touch your life in a central way, and no matter what you do you cannot escape the leadership role which puts you in the forefront. You may find yourself involved in a dynamic co-operative venture involving men and a strong element of competition, though achieving harmony or a unified goal may be an elusive quest.

PERSONAL - DESTINY: Survival of the fittest

You can portray the essence of masculinity or dynamism in your nature, probably as a result of hard-won battles at key points in your life. This may mean that you are pushy or aggressive in your social relationships, with little regard for opposition, though you may try to choose a life in which you shun confrontation. Coming to terms with the power of sexuality - its pleasures and obsessive quality - is a major life challenge. Dealing with conflict is also a lifelong dilemma for you, as you are denied the opportunity of indulging your weaknesses, and are forced to seek a position of strength in your dealings with others.

Jupiter Transiting Conjunction Mars

1/3/2006 -> 12/9/2006



Major changes will occur in the area of your life described here and you will integrate new personal behaviour and attitudes in your life.

PROFESSIONAL - DRIVES: Burning enthusiasm

It is important for you to harness the energy and enthusiasm which surges through your body at this time. The competitive edge is sharpened, and you have the courage and vision to enter the rough and tumble of the marketplace and meet whatever challenge that confronts you. You can overcome obstacles now and expand your sphere of action. This is not a time when you can be too interested in diplomatic niceties - you want to get things done, and in a hurry. There is a burning desire to achieve. This is an excellent time for pioneering activities and expansion abroad. It is also a good time for throwing yourself into hard physical work. There is an inclination to get into confrontations now, and it is not helped by your desire to impose your beliefs and convictions on others. You may try to bully your way through. Although it is favourable to act on your convictions regarding what is right and what is wrong, it pays to gain insight first and cultivate greater tolerance.

PERSONAL - DRIVES: Burning enthusiasm

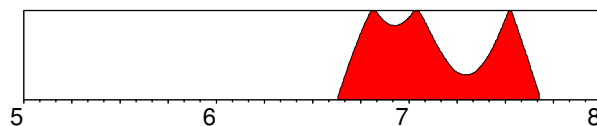
This is the time to be intoxicated by a new decisiveness and a willingness to invest your energy into getting what you want. There is a refinement of the sense of purpose and the meaning of taking action. This lust for life can manifest as an expanding of your horizons through travel, taking on new intellectual challenges, getting into your body through exercise and training - and sexual exploits. There is a sharp increase in erotic drives at

this time, and men will become increasingly aware of a need to prove themselves and their masculinity. This can manifest as the desire to woo and win the affections and body of a suitable quarry.

Women too become increasingly aware of sexual needs and the power of attraction to the opposite sex. There is a willingness to take the initiative in these matters. However it is actually the need to be stimulated intellectually that is paramount for women as far as attractions are concerned at this time. A relationship is also seen as a means to expand personal horizons and learn more about men and life in general. Indeed this period has most significance as regards insight into the body - and this includes greater consciousness concerning health, and the muscular system, as well as personal sexuality.

Saturn Transiting Square Mars

8/21/2006 -> 9/6/2007



Major irritation factors arise as a result of this influence, yet if you use this period to initiate dynamic change you will be able to make dramatic progress in your life.

PROFESSIONAL - DRIVES: Developing willpower

This is a time to mobilise reserves of willpower and pursue goals with indefatigable determination. You can expect a lot of resistance now, especially from older men in positions of authority. Effort, long-term strategy and hard work is the remedy for problems that arise at this time. Courageous action leads to the building of lasting edifices now.

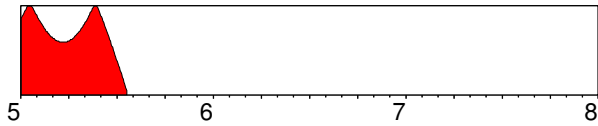
First of all it is necessary to overcome lack of self-confidence.

You may feel that there are men of greater experience available to do the jobs you want, but by training and perseverance, you can - in time - achieve the goals you set yourself. If you don't succeed, try and try again. You will become stronger and more efficient. Great satisfaction can be achieved through the power of organisation and self-discipline - if you rise to the challenge, you will achieve success. This is an excellent time for hard physical work - particularly as regards building and construction.

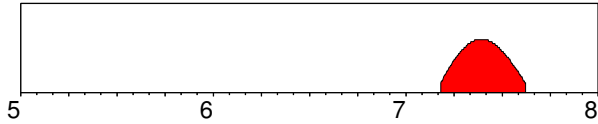
PERSONAL - DRIVES: Developing willpower

This period can be rather a trying time, and there are many obstacles to be overcome. However with hard work and determination, you should be able to have things the way you want them - finally. Men will feel unsure of themselves at this time, and there will especially be a question mark as regards their sexual needs and performance. There may be a reluctance to take the initiative in these matters for fear of being rebuffed, yet it is at precisely this time that a man can get into contact with his body, learn more about his needs and develop the confidence and assertiveness to handle sexual relationships. Circumstances may however dictate less sex during this period.

Women who experience this influence will also be concerned about their body, especially as concerned blockages preventing spontaneous enjoyment of erotic pleasures. It pays to take more time in a relationship to improve sexual contact. More patience is needed in the warming-up phase, and less focus on erogenous zones. Many sexual fears about dominance and authority can be dealt with, and the long-term effect on sexuality can be beneficial. Sometimes an older or more experienced man comes into the life now. Both sexes benefit from more exercise or training through body-building, aerobics and the like.

Saturn Transiting Trine Mars**1/1/2005 -> 7/20/2005**

Please read page 15: "Saturn Transiting Square Mars"

Neptune Transiting Square Mars**3/9/2007 -> 8/16/2007**

Major irritation factors arise as a result of this influence, yet if you use this period to initiate dynamic change you will be able to make dramatic progress in your life.

PROFESSIONAL - DRIVES: Path through confusion

You will probably experience a lot of confusion as regards your goals right now. It can be extremely difficult for you to define exactly what it is you want to do, and even if you know, it can be difficult to know how to do it. This confusion will be felt as an inner dissatisfaction - at least you know what you don't want to do! Using this feeling to guide you, strive to attain your ideals and work only on those things which really interest and inspire you.

This is an excellent period for idealistic work, both as far as social, creative and spiritual issues are concerned.

In your dealings with others you need to take great care. There is an air of decadence or dissolution about the people you meet at this time - particularly men. Alcohol and drugs can play a particularly negative role, and it is best to avoid stimulants as far as possible. You are very vulnerable to being cheated or led astray now - your moral fibre is being tested. There is a tendency to go behind people's backs, or to feel that others go behind your back. Keep on the straight and narrow path if you wish to avoid swampy ground.

PERSONAL - DRIVES: Path through confusion

This is a time when the will to achieve, and the ability to take an initiative seems to be undermined. You don't like what you have, but don't know what you want. By refining your motives and actions, and tuning in to spiritual or creative needs, you can acquire new talents. Women at this time are disposed towards very curious experiences with men. There can be attractions to inspiring, musical or artistic men who later turn out to be frauds or disappointing in some way. Rather shady affairs can arise, as the woman seeks to recapture some of the magic she expects from love and sexuality. This is a projection process by which the woman seeks in the man creative and magical qualities she should be developing in herself.

Men of weak character - particularly those who are easily seduced by their desires - tend to make a mess of relationships at these times through infidelity. Sexual satisfaction is found to be illusory however. It is beneficial to develop a better contact with the body now, perhaps channelling the invisible energies in the environment through Tai Chi, yoga, dance, swimming or similar activities. A new-found awareness of the body can give greater sexual satisfaction at this time. The power of the imagination and of film, music, wine etc. as sexual stimulants may be discovered. Take time off work to develop your creativity.

Wisdom**Jupiter In Gemini Retrograde**

Please read page 2: "Jupiter In Gemini Retrograde"

Jupiter In 6th House

Please read page 2: "Jupiter In 6th House"

Jupiter Trine Mercury

Please read page 9: "Mercury Trine Jupiter"

Jupiter Trine MC

This aspect is extremely powerful in your horoscope; it will dominate many areas of your life.

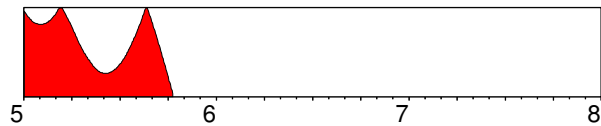
Because there is a good aspect between these two planets, you can expect the positive consequences to be strong and very creative, and the negative consequences minimal.

PROFESSIONAL - GOALS: Counsellor

Your foresight and understanding are important assets in your career. You can work in an advisory capacity, and may function well in areas concerned with publishing, travel, law or international affairs. Superiors tend to support you and ensure your promotion. Your chief weakness is a tendency to overestimate your own importance, and to foist your own views on colleagues. You need meaningful goals, and when you follow them you are destined for success.

PERSONAL - GOALS: Counsellor

Fortune smiles on you in family and professional matters. Your upbringing was probably quite enlightened, and many of the strong views and convictions you have stem from the example of your parents early in life. You want to achieve a position of importance in your community. You appreciate space around you in your home environment. You may have a tendency to be showy, and when it comes to property, this can be expensive.

Jupiter Transiting Trine Jupiter**1/1/2005 -> 10/10/2005**

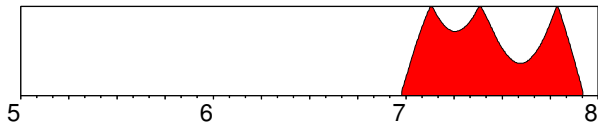
This long-term and formative influence will enable you to realise your creative potential in the following area. Try to make the most of the opportunities which now come your way.

PROFESSIONAL - WISDOM: Development of insight

As Jupiter represents areas of your life in which hopes and visions for the future are paramount, as well as the need to gain understanding and meaning, you can expect an increase of awareness and activities in these areas now. If you are motivated by the need for expansion and growth, then you can expect advances. There is increased focus on your ability to act on moral values and pursue your convictions concerning society. This is the time to refine your judgement and manifest your capacity to guide and counsel others. If you have a tendency to overestimate yourself, indulge moral weaknesses or to make premature judgements, then you will be confronted with this side of your character now. If self-discipline and a natural carefulness is a part of your nature however, you can take advantage of opportunities to expand.

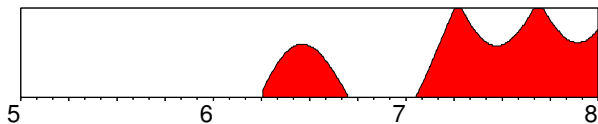
PERSONAL - WISDOM: Development of insight
Jupiter takes 12 years to go around the Sun, so it will return to its own position at the ages of 12, 24, 36 etc., and activate itself by major aspect every 2 years. During these phases of your life you can increase your insight and understanding, and plug in to that most essential part of your life which gives you a sense of purpose and meaning. It is at these times that you can rediscover your joy in existence and faith in the future. This in turn will enable you to be fertile and grow. However if you are the type who is over-confident or immodest, then you will learn a lesson at this time. Your hopes and visions for the future should be within the bounds of possibility, and if you do not keep in touch with the ground under your feet, you lose out in the long run.

Jupiter Transiting Opposition Jupiter 12/25/2006 -> 12/3/2007



Please read page 17: "Jupiter Transiting Trine Jupiter"

Uranus Transiting Square Jupiter 4/5/2006 -> 12/31/2007

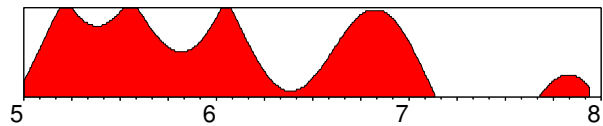


Major irritation factors arise as a result of this influence, yet if you use this period to initiate dynamic change you will be able to make dramatic progress in your life.

PROFESSIONAL - WISDOM: Journey into Space
This is a very dynamic period for the expansion of your horizons. There will often be long-distant travel to exotic destinations at this time, or increased contact with foreign countries. International contacts can prove valuable to your profession, and should be cultivated. During this explosively expansive period there can be considerable restlessness - you can hardly be satisfied with a desk job now, or any kind of education or training which does not offer an experiential curriculum. Surprising and unpredictable developments can arise - particularly in connection with legal matters; therefore care should be taken as regards contracts or commitments. You can use the energies of this period optimally by integrating new visions of the future into your goals. Enhanced consciousness and interest in unconventional subjects can play a role in your future.

PERSONAL - WISDOM: Journey into Space
This may well be a period of increased social activity and intellectual curiosity. During these months revolutionary new opinions can lead to a radical change in your viewpoint. Contact with foreigners and their cultures can be a catalyst in this process. You may find yourself getting involved with New Age or international groups. This is a great time for inspiration and radical consciousness change, but you may find yourself at cross purposes with people who have traditionally had a strong influence in your life. You have a desire to overthrow intellectual and religious authorities now, and replace restrictive ideologies with ideals about freedom of the individual. You want to define and follow your own path to personal growth at this time, without the heavy hand of any guru or mentor.

Neptune Transiting Trine Jupiter 1/1/2005 -> 12/10/2007



This long-term and formative influence will enable you to realise your creative potential in the following area. Try to make the most of the opportunities which now come your way.

PROFESSIONAL - WISDOM: Foggy futures
You will find that your convictions and beliefs as regards your career get undermined at this time. Can you really rely on the principles you have stuck to hitherto? New factors arise will force you to change your judgements. It is a question of integrating new insights into your professional life. You have to look at your dreams for the future and decide what values can hold up in the long term in connection with your ideals and dreams. It is at this time that you can be wildly optimistic in connection with future visions - ensure that you can put these visions into practice. Your natural optimism may prove to be illusory. Legal matters can lead nowhere now, so extricate yourself from any complex litigation.

PERSONAL - WISDOM: Foggy futures
This is a very spiritual period for you, though you may experience a great degree of inner confusion. The principles and beliefs you have embraced in life will be challenged and undermined by uncomfortable new insights. You can gain a deep understanding of extremely subtle influences which shape human fate. If you have very fixed religious views, you will find that they no longer hold water. By integrating new visions and ideals you will truly enrich your life. It is a time of spiritual renewal. Let go of dogma and open yourself to experience. This is an excellent time for travels with a spiritual or artistic content.

Jupiter Transiting Through 9th House 1/1/2005 -> 1/2/2005

PROFESSIONAL - WISDOM: Expansion of horizons
This is an expansive phase for you where you can increase the influence of your ideas. More travel - perhaps to far-off countries - and greater intellectual curiosity, will enlarge your views of the world and your place in it. You may be fortunate enough to find a mentor who can help you forward at this time. It pays to do things on a larger scale - especially as regards publicity and marketing. You can reach a greater proportion of the public now. Act optimistically to realise your long-term visions for the future.

PERSONAL - WISDOM: Expansion of horizons
This period is one of great optimism and sense of freedom. You need to get out and see the world, or expand your horizons through study or meeting people who inspire you on a spiritual level. You can take your intellectual development seriously now, but otherwise this is a time to travel and enjoy life, rather than for deep commitments. At this time you will appreciate a partner who encourages you in your search for freedom and understanding.

Jupiter Transiting Through 10th House 1/3/2005 -> 3/4/2005

PROFESSIONAL - WISDOM: Professional expansion
This can be a fortunate period for you professionally. Set your sights high and expect to achieve your goals within a year or so. You can cash in on your influence now and expect help from above! There may be an expansion of your field of responsibilities

and opportunities may arise in connection with abroad. Superiors will be well disposed to you and you can benefit from their advice and experience. By thinking positively and going for optimal results you can create the future you desire.

PERSONAL - WISDOM: Professional expansion
Generally speaking you are more concerned about taking advantages of your professional opportunities now, than worrying about partnership matters. However they may be an expansion in the family now, and you may wish to invest in, or improve, your home. You can learn at this time how important it is to formulate what you want in life in a positive fashion. You gain insight in setting goals for the future and sharing them with your partner.

Jupiter Transiting Through 9th House

3/5/2005 -> 8/25/2005

Please read page 17: "Jupiter Transiting Through 9th House"

Jupiter Transiting Through 10th House

8/26/2005 -> 1/11/2006

Please read page 18: "Jupiter Transiting Through 10th House"

Jupiter Transiting Through 11th House

1/12/2006 -> 4/27/2006

PROFESSIONAL - WISDOM: Social expansion
Some major professional advancement can arise through co-operation with good friends now - although they may be over-optimistic about what they can achieve. Generally speaking you can also expect financial improvement because of prior investments in your career. This is a fortunate period. You may find that you achieve greater success through relaxing and expanding your social influence, than through simply working hard. Invest in people.

PERSONAL - WISDOM: Social expansion
You can really expand your understanding of life through contact with friends now. You will meet people who you appreciate for their wisdom and experience in life. Great pleasures come from meetings with intellectually inspiring people or a particular friend who acts as your mentor. You make contacts in the wide world at this time.

Jupiter Transiting Through 10th House

4/28/2006 -> 9/10/2006

Please read page 18: "Jupiter Transiting Through 10th House"

Jupiter Transiting Through 11th House

9/11/2006 -> 12/30/2006

Please read page 18: "Jupiter Transiting Through 11th House"

Jupiter Transiting Through 12th House

12/31/2006 -> 12/17/2007

PROFESSIONAL - WISDOM: Spiritual depths
You may have more pleasures from withdrawing from the rough and tumble of the business world at this time, and your interests are probably more centred on you private life than on your public life. It is wise to assume a low profile as regards your personal convictions, and to invest more in your inner development than outer expansion. There may be expansion in your dealings with public service institutions.

PERSONAL - WISDOM: Spiritual depths

This is a time of rapid spiritual growth or increased creative activity in which you feel a greater bond to the universe. You will be enriched through isolation, and can experience great pleasure through communion with nature or meditative activity. It is your inner life that matters now, so concentrate on spiritual growth. You may feel drawn to act more compassionately, and your understanding of the human predicament is enhanced.

Jupiter Transiting Through 1st House

12/18/2007 -> 12/31/2007

PROFESSIONAL - WISDOM: Make optimistic plans
You can make the most of a surge of self-awareness and self confidence now by assuming a higher profile. Use the feeling of increased enthusiasm and self-confidence to strike out on a new and dynamic path for the future.

PERSONAL - WISDOM: Make optimistic plans
Increased happiness and confidence in your future gives personal affairs a boost. There is a new energy surplus now which leads to considerable expansion in many areas of your life. Extra charisma enriches personal relationships now.

Challenges

Saturn In Scorpio

PROFESSIONAL - SELF-RELIANCE: Reconstruction
Saturn was in Scorpio in the years 1923-26, 1953-56 and 1982-85. At this time there was great concern about threats, whether social, economic or military, and a deep interest in hidden issues, power and corruption. There was an element of paranoia in society. Inasmuch as you express this influence in your choice of career, you will be capable of dealing with power at the highest level, and may have a talent for rooting out corrupt or inefficient practices in society. On the other hand you may feel that you are subject to unfair misuse of power yourself, and this can especially manifest itself in your contact with authority figures or institutions in society. So you may find yourself on either side of the balance of power. Should you deal with finance, then you will work at some point in some rationalisation process, or have to deal with economic loss or bankruptcy. You may be involved in secretive institutions, or you could work on a deeper psychological level in your career.

PERSONAL - SELF-RELIANCE: Reconstruction
You were born at a time when there was a heaviness in the collective spirit, with many irrational fears, and you have probably integrated this spirit into your own emotional nature. There is a sense of controlled power and deep emotional discipline. Intimate emotional relationships are extremely important to you, but you may have great difficulty lowering the floodgates of your own emotions. Fear of emotional loss drives you to exert an almost hypnotic control in intimate partnership. You are both driven to investigate the deepest emotional motivations of others, and rather paranoid about revealing your own. There is a particular fascination with sexual taboos, and a great need to overcome your own sexual blockages. It is important for you to replace fear with trust, and to cultivate a relaxed emotional attitude instead of exhausting yourself trying to control the uncontrollable.

Saturn In 10th House

PROFESSIONAL - SELF-RELIANCE: Assume authority
Achieving professional success and a respectable status will be a lifelong goal for which you will strive in your life. You would achieve success quicker by working a bit smarter instead of

working a bit harder. On your way up the ladder of achievement you will meet many obstacles - particularly from older people in positions of power. Instead of being frustrated, see these obstacles as important tests which subtly strengthen you so that you will be able to meet future challenges. It is unlikely that you will experience success in the first 30 years of your life, but the decisions you make around the age of 30 will change your professional destiny. Important career restructuring will take place around the age of 44 and 52. At the age of 59 it is wise to replace professional goals with existential considerations. You may never notice the success you have already achieved, because you constantly set higher goals for yourself. As a long-term planner, you must be able to see how this kind of motivation eventually will lead to frustration.

PERSONAL - SELF-RELIANCE: Assume authority. You make high demands on yourself, and this is probably due to early parental expectations which are not easy to live up to. If you strive to fulfil other people's expectations, you may never be satisfied, and you may forget to relax and enjoy the results for which you have worked so hard. Relationships suffer from too much emphasis on ambitions. Success can also be measured by your ability to cater for and respect the needs of a partner. However, you have a certain destiny to fulfil, and your personal drive and sense of responsibility means that you can have considerable impact on the society you live in. People will automatically respect you and invest you with authority.

Saturn Square Sun

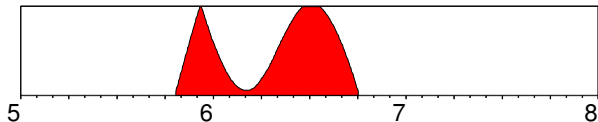
Please read page 4: "Sun Square Saturn"

Saturn Square Venus

Please read page 12: "Venus Square Saturn"

Jupiter Transiting Conjunction Saturn

10/22/2005 -> 10/3/2006



You can expect powerful change in this area, as you learn to integrate the following influence into your life.

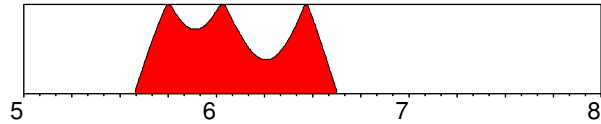
PROFESSIONAL - SELF-RELIANCE: Expanding the framework. It is at this time of your professional life that the urge for growth and expansion confronts the forces of inertia in your career, or in society. You get to appreciate the power the establishment has over your life at this time. You are challenged to examine how you limit yourself and your future through restrictive systems or a lack of vision and faith in your abilities. If you can find the balance between learning from past experience yet allowing a future vision to inspire you, you may expect solid and steady growth at this time. It is important to expand within a certain framework and to accept the limitations imposed by professional authorities. If you do this you will be an important cog in the development of your company, or culturally in society.

PERSONAL - SELF-RELIANCE: Expanding the framework. At this time of your life you have the opportunity to loosen some of the bonds that restrict you, and lighten the load which weighs you down. This is the time that you have to adjust the awareness of what is necessary by becoming aware of the art of the possible. Restricting life patterns can be replaced or adjusted by exploring new avenues for the future. Inasmuch as you are

hampered by a sense of insufficiency or inferiority as regards your abilities, you can gain renewed confidence and faith in yourself now by defining future goals and working hard to achieve them. You can build a lasting niche for yourself in society at this time by laying new foundations for the future.

Saturn Transiting Square Saturn

8/1/2005 -> 8/16/2006



This is a time of tension and dramatic change which may be most apparent in your domestic life, or in your career. Use the time to make much-needed changes.

PROFESSIONAL - SELF-RELIANCE: Adjusting direction. As Saturn takes 29-30 years to orbit the Sun, it makes a major aspect to itself about every 5 years, and these are times when adjustments of direction and goals have to be made. At the age of 29 to 30 however, a major reorientation is necessary. You have to look carefully at what structures you have built up in your life and why. If you don't make changes now, when can you? Are your ambitions your own, or are you simply fulfilling the expectations of your parents or of authority figures in society?

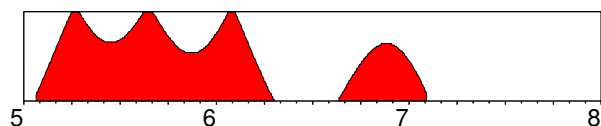
It is essential to spend some time sensing what it is exactly you want for yourself in life. Cast aside all the unnecessary baggage which you have accumulated in your efforts to carve yourself a professional niche in society. Don't worry about personal status and ambition for the time being, and don't listen to people who tell you what they think is good for you. The older you get the more important it becomes not to waste time pursuing superficial career goals which will be of no benefit in the long run.

PERSONAL - SELF-RELIANCE: Adjusting direction. All phases of the 30 year Saturn cycle are important, although the ages 30, 44, and 52 are perhaps the most significant. These are times when you have a chance to review the passage of time and assess the unfolding of your life. Are you satisfied with the direction it is taking? If not, change it now. Change need not be radical, you just have to define what it is you truly want to spend time on. Remember your responsibility is first to yourself. The biggest gift you can give to others, is to show that you are satisfied with your own life.

It is important to weigh the balance between career and family commitments now. Do not be influenced by what other people expect of you - only you can know what it is that you really need in life. The yardstick for decisions at this time is: Imagine you were on your death bed...what then, would you wish you had achieved in your life? The wrong decision now can mean years wasted on unfulfilling work.

Uranus Transiting Trine Saturn

1/25/2005 -> 2/4/2007



This long-term and formative influence will enable you to realise your creative potential in the following area. Try to make the most of the opportunities which now come your way.

PROFESSIONAL - SELF-RELIANCE: Renewal of plans

This may well be a period of increased social activity and intellectual curiosity. You should ask yourself questions now concerning the viability of long-term plans and well-established traditions in your career. Should things continue as they have been, or would it be wise to experiment and integrate new techniques? Unpredictable events can arise which force you to make changes. It would be to your advantage to consider the humanitarian aspects of your work, and do something which has positive social consequences. International contacts and modern technology can also benefit you. On a deeper level you may want to take a closer look at professional commitments and change your values, so that you can have more freedom and independence. Freedom, experimentation and flexibility are key words now, as you cannot thrive under the command of others, or with a rigid work schedule.

PERSONAL - SELF-RELIANCE: Renewal of plans
If your life is dominated by rigid patterns and tight schedules, you will be wanting to liberate yourself from their tyranny now. Many of the structures that you have built up in your life serve only to constrict you and prevent further development and growth. Now is the time to open doors and take a few risks with your life. Cut back on commitments, put your Time Manager away and brush away the cobwebs of your mind. It is no use being restricted by the same old arguments about responsibility to others - parents and partner must accept that there is also a personal responsibility to develop greater consciousness. Unpredictable things can happen now, structures break down, carefully laid plans are abandoned - you need a dash of excitement.

Saturn Transiting Through 7th House **1/1/2005 -> 8/25/2005**

PROFESSIONAL - SELF-RELIANCE: Commitment to others
The challenges in life move from work and integration problems to dealing with personal weakness in valuable relationships. You will be confronted by inherent flaws in partnerships and have to take steps to give these relationships a better foundation. At the same time you are challenged to overcome shyness or lack of confidence in contact with others. It pays to extend your influence by being more outgoing now. Much resistance is encountered in the outer world, and you may find progress hindered by authority figures who make demands on your abilities and your time. Many important deals and partnerships can however be cemented over these years if you rise to the challenges of a more outgoing life.

PERSONAL - SELF-RELIANCE: Commitment to others
This period is of utmost significance in regards to intimate relationships. You are challenged now to overcome selfish tendencies and rise to the responsibilities of relating to another person. Insofar as you experience other people restricting you now, you should know that things improve only when you are prepared to take responsibility and work hard. Great rewards arise when you make a commitment - you cannot afford to waste time on trivial relationships. Long-term relationships may well run into problems at this time because adjustments need to be made. This requires a willingness to confront issues and accept changed conditions.

Saturn Transiting Through 8th House **8/26/2005 -> 3/8/2006**

PROFESSIONAL - SELF-RELIANCE: Confronting fears
In this period you may well feel up against powerful institutions in society. It pays to have all your dealings with the authorities on a healthy footing. It is no use pitting your will against organisations or people who have more power than yourself. The time has

come to put a great deal of effort into establishing your own security and economic autonomy, so that your future is not in the hands of others. You may be tempted to sell out your independence for greater job or economic security, although this may not be to your advantage in the long run.

PERSONAL - SELF-RELIANCE: Confronting fears
At this time you will have to work hard to break through fears and emotional blockages in relationships. You are now challenged on an intimate level to be open about your feelings and desires. Sexual frustrations can arise until you learn to be more vulnerable. You may be haunted by unnamed fears and compulsive worries, and this may affect your sleep. Therapy and interest in psychological issues brings personal growth at this time.

Saturn Transiting Through 7th House **3/9/2006 -> 5/2/2006**

Please read page 20: "Saturn Transiting Through 7th House"

Saturn Transiting Through 8th House **5/3/2006 -> 12/31/2007**

Please read page 20: "Saturn Transiting Through 8th House"

Originality

Uranus In Cancer Retrograde

Because of the relative position of this planet in relationship to the Sun and Earth, it appears to be moving backwards. This may make you more thoughtful or introverted in the area concerned.

COLLECTIVE - ORIGINALITY: Universal family
Uranus takes 84 years to orbit the Sun and is in this sign for 7 years, representing a collective influence on a whole generation. It shows how you are most influenced by revolutionary attitudes in society. When the Ascendant is in Aquarius this influence will be expressed in a more personal way. Uranus went through this sign from 1949 to 1956, and will do so again from 2033 to 2040. Politically this brings new concepts of patriotism, with isolationist tendencies on the one hand, and new political alliances and loyalties on the other. On the social front there are great changes in the public view about the family unit and challenges to the traditional idea of family as a stable institution.

If this influence happens to be personalised in your horoscope, you will have experienced dramatic and unpredictable developments in your own upbringing, which will affect your attitude to social and family bonds later in life. You may manifest your uniqueness through some unusual event or personal style in connection with your own family - in particular a tendency for communal living. You may also have the ability to take in your stride radical change in the family or sudden moves of home.

Uranus In 7th House

PROFESSIONAL - ORIGINALITY: Unconventional relationships
You have the ability to change other people through daily contact with them. You may have many abrupt meetings with people during your work and actually you like the distraction of seeing new faces during the course of the day. You have a talent for dealing with people who are outsiders in society, whether because of social inequality or because they come from another culture or land. You are at your most inspired when you can shock people into action or raise their consciousness in some

way. As you rather dislike being limited by conventional relationships, you function best in an independent position in which you can choose who you want to be with and who you don't. Business partnerships can end suddenly and unpredictably because your criteria for co-operating with others are centred around interest and novelty rather than stability.

PERSONAL - ORIGINALITY: Unconventional relationships
You have a need for relationships which run contrary to conventional expectations. Partners can be much older or much younger, from another land or culture, have an extraordinary position in society, or simply be socially provocative in one way or another. This is because you sense that being with someone totally different is very stimulating for your awareness. If you make the mistake of a conventional marriage early in life, the likelihood of divorce is strong. As you tend to break accepted conventions in relationships, the stability of your relationship is not protected by the usual strict taboos of marriage. Indeed you may prefer an informal to a formal relationship, even living apart or in separate places. Periodic separations actually suit your style, so if the partner travels a lot or is away for some other reason, this need not have a negative influence.

Uranus Sesquisquare Moon

Please read page 6: "Moon Sesquisquare Uranus"

Uranus Trine Mars

Please read page 14: "Mars Trine Uranus"

Uranus Square Neptune

It may be difficult for you to discern the influence of this combination of planetary energies; it is weak and may be outweighed by stronger influences.

In your chart there is disharmony between these two planetary influences, and this will be reflected by many struggles both within your mind, and out in the world.

PROFESSIONAL - ORIGINALITY: Spiritual revolution
This long-lasting aspect will be shared by everyone born in any particular 4-year period, but if you express its influence in your career you will be able to channel a talent for working with the electronic media on one level, or personal consciousness on another. There is an electric idealism with this aspect and very little grounding. Some people may be able to tune into latent telepathic and clairvoyant powers, and use them in their job. Contact with international companies which have strong cross-border communications brings good fortune. Work with advanced technology, especially connected with instantaneous communication is another possibility. There is an inbuilt tension between the principles of freedom and service which can be expressed in irrational political and social convictions.

PERSONAL - ORIGINALITY: Spiritual revolution
This aspect has an influence on a particular generation, but you may personally feel and express its power through an interest in aspects of human consciousness which are on a very subtle level. This can relate to the power of dreams, clairvoyance etc. - in fact the whole spectrum of the New Age movement. If personal planets also aspect these distant planetary giants, you will feel a deep longing to transcend yourself through some kind of spiritual interest. Drastic changes will occur in the pursuit of your dream, and you may be willing to abandon the secure structures you have built up to follow your ideals. Needless to say you will often be disappointed, but the whole process enhances your awareness and spiritual consciousness. You can be deluded by the allure of charismatic personalities - take care.

COLLECTIVE - ORIGINALITY: Spiritual revolution
These two planets conjoin once every 172 years, so aspects between them are rather rare. There was a trine during World War II, and a square in the mid-fifties. Most recently they were in conjunction in 1993 for the first time since 1821. As Neptune was only discovered in 1846 this last conjunction is the first to take place with the knowledge - and after Voyager 2's flypast - participation of humanity. This aspect brings deep-seated change to the consciousness of humanity. On one level the advanced technology of the period transcends border and race to join all nations together. Global communication warps and undermines accepted notions of time and space. Revolutionary change comes to governments as they integrate the very disparate need to be individual and independent with the need to belong to a greater whole. This signals a growth period for electromagnetic energy and the media, as well as all forms of electronic communication. On an inner level there is a spiritual revolution, with the flowering of esoteric interests.

Uranus Opposition N. Node, Uranus Conjunction S. Node

This aspect is extremely powerful in your horoscope; every action you take will be coloured by this energy.

As these two planets are on opposite sides of your horoscope they indicate that you are split between two quite different drives. As a result you tend to imagine other people with the negative qualities described.

PROFESSIONAL - DESTINY: The lightning rod
Exciting things happen around you, wherever you are, and you are destined to galvanise into action the groups and organisations you are involved with. You are a force for renewal in those situations that have ground to a halt, and you can channel a message of inspiration or revolution. On the other hand, you tend to light the bomb and walk away, often being seduced by the idea of change for its own sake, and rarely having the ability to handle the consequences. There may be an element of extremism in your nature, and an attraction to extremist groups, or to people on the fringes of society.

PERSONAL - DESTINY: The lightning rod
You are possessed of a magnetic aura which can be very inspiring for the people who meet you. Nevertheless you are also an upsetting influence, so that although people may look to you for inspiration, they may feel a certain discomfort in the long run. Indeed it is your fate to be something of a provocateur - you do not believe in people getting too comfortable. You are a force for change, and may have a particular ability for New Age interests, dealing with subtle energies etc. Dramatic consciousness change at intervals in your life can sweep the ground from beneath your feet and carry you off with your head in the clouds.

Uranus Square MC

This aspect is of medium strength and its influence will often be felt, though not acutely.

There will be great difficulty in integrating these two planetary influences, and the promised harmonious results will only arise after you have expended time and effort.

PROFESSIONAL - GOALS: Radical goals
Strange and sudden changes of direction can sweep you from one career to another, until you gravitate towards a job which satisfies your need for excitement and unconventionality. You have a talent for consciousness-raising matters, but there may also be technical interests, or a fascination with exotic lands or cultures. Your relationship to authorities can be rather strained,

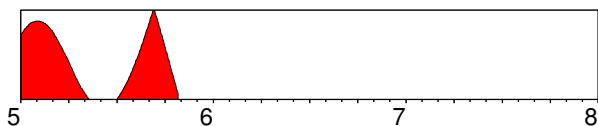
as you hate being categorised or ordered about. Your independence is very dear to you.

PERSONAL - GOALS: Radical goals

Unusual circumstances connected with your parents or your childhood have stimulated an interest in an unorthodox career or family life-style. You may be attracted to a form of communal existence, or you may choose to settle in an unusual environment. The urge for excitement descends on you unexpectedly at intervals in your life, and at these times you can enact radical career or domestic changes.

Jupiter Transiting Square Uranus

1/1/2005 -> 10/26/2005



This is a time of tension and dramatic change which may be most apparent in your domestic life, or in your career. Use the time to make much-needed changes.

PROFESSIONAL - ORIGINALITY: The future now

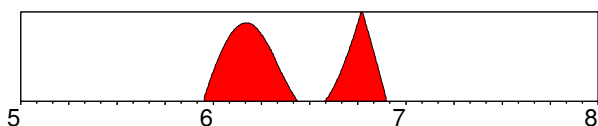
This is a time when insight and awareness of the future should be a force of inspiration and renewal in your professional life. Expect a dramatic increase in your horizons - either through long-distant travel and contact with exotic lands or peoples, or through mind-expanding activities connected with consciousness growth. Progress in your career depends on your ability to think in completely new channels and harness modern methods - both as far as technology is concerned, but also concerning revolutionary methods. This is a time of exciting possibilities and great inventiveness. The urge to be free and uncommitted may well have to be given priority over personal ambitions now.

PERSONAL - ORIGINALITY: The future now

During this period of excitement and unpredictability, you have a strong desire to expand the boundaries of your consciousness. Contact with foreign lands and cultures can blow your mind, and experiences on untraditional training courses or with experimental groups can give you a new sense of destiny or insight into transcendent aspects of your life. This is a good time for astrology and New Age interests, and to meet people who share special interests. So experiment, take a few risks and loosen your bonds you need to allow the unknown and unexpected to happen.

Jupiter Transiting Trine Uranus

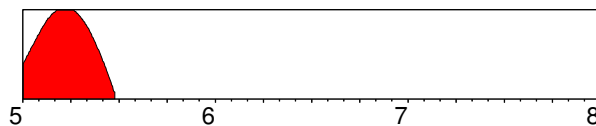
12/15/2005 -> 11/24/2006



Please read page 22: "Jupiter Transiting Square Uranus"

Saturn Transiting Conjunction Uranus

1/1/2005 -> 6/24/2005



Major changes will occur in the area of your life described here and you will integrate new personal behaviour and attitudes in your life.

PROFESSIONAL - ORIGINALITY: Limiting individualism

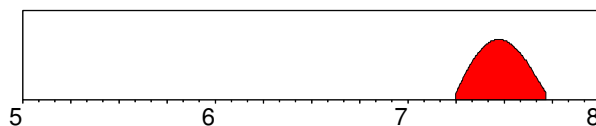
This influence may not be so obvious in your life, unless you have strong Aquarius characteristics. It is a time when it pays to make constructive use of modern techniques in your career, or perhaps pursue interests connected with exotic cultures or people. Concrete work on untraditional or new age interests is also favoured. You will probably find that you will have to make some compromises with your tendency to be an outsider and to hold society at arm's length. It pays to build a bridge between old traditions and modern trends. Social idealism and commitment is favoured.

PERSONAL - ORIGINALITY: Limiting individualism

During this phase of your life, you will find that you have to take more responsibility for those sides of your nature which are outrageous or provocative. Authority figures will demand more self-discipline and social awareness, and you will not be permitted to merely indulge your extremist views. However this is a good time to develop your interests in original and untraditional subjects, new age matters, and global awareness, especially if you have constructive plans in these fields. This may be a time when you will want to make a more formal commitment to an unusual group.

Uranus Transiting Trine Uranus

4/3/2007 -> 9/19/2007



This is a very beneficial influence, though you may not be consciously aware of the process. Creativity and travel are favoured as you expand your capacities and sphere of influence.

PROFESSIONAL - ORIGINALITY: Self-renewal

Everybody experiences this influence at similar ages, each time Uranus aspects itself during its 84 year orbit around the Sun. The ages of 21, 42 and 63 are the most significant times of change and reorientation. At these times you are challenged to make some form of renewal in your career. Unpredictable events upset plans and force you to keep up with the rapid pace of change going on in the modern world. It is favourable to broaden your horizons through travel and self-development course, and unfavourable to plod on in the same old direction. Self-realisation should take priority over status and ambitions now.

PERSONAL - ORIGINALITY: Self-renewal

Uranus makes major stressful aspects to its birth position every 21 years, and major positive aspects every 16 years. These should be times of exciting change and experimentation. Don't let yourself be restricted by the establishment - particularly in the form of parents and partners - during these periods. It is your job to challenge the status quo and preach the doctrine of renewal

and change. Travel and change of environment can serve to bring you in contact with the electric energy of life. Be inspired and take a few risks.

Transcendence

Neptune In Libra Retrograde

At birth this planet appeared to be moving backwards relative to the Earth. You will learn special lessons in connection with attachments to people and things from the distant past, and a turning point will arise, at some point in your life, in the matters described.

COLLECTIVE - TRANSCENDENCE: Cosmic balance
Neptune takes 165 years to orbit the Sun, and approximately 14 years to go through one sign. Its influence affects a whole generation, and is associated with a new sensory and spiritual awareness, and greater compassion, in connection with the sign it is in. For most people this influence is experienced on a collective level, but those who have their Ascendant in Pisces will express it in a personal way in their lives.

Neptune was in Libra from 1778 to 1793, and again from 1942 to 1955. There was an especial concern with justice and equal rights in these periods, with a strong idealism concerning equality before the law, and between the sexes. There was a strong tendency to over-idealise partnership in the media, whilst the institution of marriage was undermined in public life. Politically there is a strong emphasis on the balance of power, with grotesque distortion of opposing factions.

If you channel this collective influence in a personal way, you will have many unrealistic ideals about love combined with great hopes for happiness in relationships. You will however be profoundly influenced by the dissolution of relationships around you, and a need will arise to redefine the importance of partnerships in your own life. You may however have a very refined talent for dealing with other people, partly because you have a compassionate nature and genuine interest in others. You believe in being on an equal level with others.

Neptune In 10th House

PROFESSIONAL - TRANSCENDENCE: Realise your dream
Professional satisfaction can be a very elusive quality for you - at least in the early part of your life. Whilst other people identify strongly with their profession, for you it can be difficult to see the meaning of working in a nine-to-five job all your life. Your goals are Life-goals - designed to give you deep inner fulfilment. As such you would be happiest in a creative profession, or working helping other people, or realising idealistic visions. There may be some connection with the oil or chemical industry, or welfare programmes. Strangely enough you have a tendency to encounter a boss who is unreliable in some way, perhaps because of a health or alcohol problem. You can easily find yourself working in an ordinary job, while you just daydream about what you would really like to do. However, if you used your visualising talents in a disciplined way, you could easily achieve your dreams. You can make decisive changes around the age of 40 - 41 in this respect.

PERSONAL - TRANSCENDENCE: Realise your dream
You are a person with unfulfilled dreams, and satisfaction in life probably will involve become more practical and realistic. Eliminate undefined longings about what you can do, or who you can be and try to define what really will give meaning in your life. You have a tendency to attach yourself to an impossible goal as a way of getting out of doing anything. This is related to the early

experience of a parent who felt professionally thwarted in some way. Partners will grow tired of you blaming those in authority for preventing you achieving your goals. The first step towards achieving results is to abandon blame or a tendency to martyrdom. You achieve true satisfaction when you can work with something that gives nourishment to the souls of others.

Neptune Square Uranus

Please read page 21: "Uranus Square Neptune"

Neptune Sextile Pluto

This aspect is extremely powerful in your horoscope; it will dominate many areas of your life.

When reading the following description, please bear in mind that you are a fast learner and overcome any difficulties involved very quickly. You can expect to use this aspect constructively and harmoniously.

PROFESSIONAL - TRANSCENDENCE: Mass vision

These aspects are very rare and last a very long time. Indeed, as Pluto moves within the orbit of Neptune in the closing years of the 20th century, the present sextile aspect between the two planets lasts from 1940 to 2040 - one hundred years - so almost everyone has it! If you are able to manifest this influence on a personal and professional level (through powerful contacts in your own horoscope), it may be connected with a deep spirituality and creativity. There can be talent for dealing with the media and wide ranging themes connected with the masses. Material issues will be less important for you than the realisation of a collective dream. There can be clairvoyant powers, and abilities connected with dreams, symbols and visualising. In industry there can be a talent for dealing with oil, the film industry or the transforming power of collective visions.

PERSONAL - TRANSCENDENCE: Mass vision

If you have this influence powerfully evoked by other factors in your horoscope, you will be deeply affected by spiritual issues, and constantly seeking to refine your consciousness. At these times you are likely to experience great personal disorientation and confusion, as old dreams and visions are replaced by new, deep psychological insights. Inner growth will have major priority in intimate relationships. During periods of your life you will undergo deep transformations in which your fantasy and imagination will play a powerful role. It is essential to learn to use your imagination in a positive way by learning about the power of the unconscious.

COLLECTIVE - TRANSCENDENCE: Mass vision

The Neptune/Pluto planetary cycle is connected with spiritual evolution on Earth and whole generations share this present harmonious aspect which - lasting as it does from 1940 - 2040 - is connected with a deep spiritual transformation process affecting the whole of human consciousness.

Neptune catches up with Pluto every 492 years, in what can be considered a spiritual seeding period for our planet. New collective ideas emerge at the start of this cycle, evoked by sudden developments of the technology and discoveries of the time. The major conjunctions since the birth of Christ were 411 AD, (disintegration of Roman empire), 904 AD, 1398, and 1891-2. This last conjunction in the sign of Gemini may therefore partly relate to the revolution of transport (flight and automobiles) and communication (radiowaves) which has such immeasurable effects on our consciousness today.

Neptune Square N. Node, Neptune Square S. Node

Though not especially strong, you will be able to feel the influence of this aspect under many circumstances.

As there is tension between these two planetary influences in your chart, it will be very difficult for you to achieve the promised beneficial results before the age of 30.

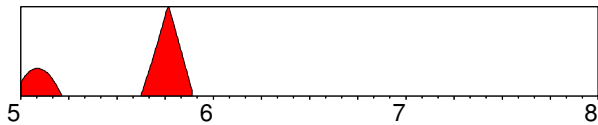
PROFESSIONAL - DESTINY: Living a dream

Though you tend to keep yourself on the outskirts of the organisations and groups which constitute society, you may be able to exert a quiet influence on the collective mood through your deep concern or high ideals about human life. You may have Utopian principles with completely unrealistic dreams about human nature and social relationships, but you do have a guiding vision for humanity. You may have the ability to channel collective visions through the power of the media. People project their hopes and dreams onto you.

PERSONAL - DESTINY: Living a dream

Your life is a journey in search of the unattainable. You are guided by feelings and intuitions which go completely beyond your personal ego, and you may feel - or long for - a sense of connection with eternal forces in the universe. During the whole course of your worldly existence you are reminded of the emptiness of so-called reality. Many disappointments arise to remind you of the futility of worldly ambition, and the field of human relationships is pervaded by an aura of dissatisfaction. You are in the world, but not of it.

Jupiter Transiting Conjunction Neptune 1/1/2005 -> 11/22/2005



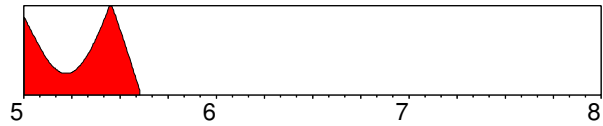
Major changes will occur in the area of your life described here and you will integrate new personal behaviour and attitudes in your life.

PROFESSIONAL - TRANSCENDENCE: Balloons and bubbles
You will experience a tremendous stimulation of your imagination at this time, and this can be used to advantage if you can harness your fantasy to some creative work, especially in connection with music, imagery and the arts. If being realistic is an integral part of your career, take care. Your idealism and dreams peak at this time, and this can seriously affect your judgement. Your imagination can be gripped by great hopes, and you have a tendency to attach your hopes to a bubble which expands and expands until it bursts. Inspiration is OK, but make sure that you do not get carried away into a world of dreams. Listen to the voice of reason, and work in stages with verifiable goals.

PERSONAL - TRANSCENDENCE: Balloons and bubbles

If you are a dreamer, this is the time when your dreams take wing and carry you into surreal landscapes. If you do not want your hopes to be dashed, you must be aware of your limits and let yourself be guided by common sense. Great hopes will often turn out to be illusory, so don't let your imagination get out of control. However this is an excellent time for developing your imagination and your visualisation power. If you choose you can enrich your life with great spiritual insight, and gain a subtle knowledge about the nature of reality and the illusion of identity.

Saturn Transiting Square Neptune 1/1/2005 -> 8/8/2005



Major irritation factors arise as a result of this influence, yet if you use this period to initiate dynamic change you will be able to make dramatic progress in your life.

PROFESSIONAL - TRANSCENDENCE: Making dreams concrete
This influence may not be felt very strongly, unless you have a strong Pisces influence in your horoscope. It can be difficult to make concrete plans now, things tend to flow in an uncontrollable way, goals slip through your fingers. Instead of making strategies and long-term goals it would be an advantage to do something constructive with your creative talents. Your greatest asset at this time is your imagination, so try to think of practical applications for creative ideas. If you act in a determined manner you can realise many of your dreams and visions now. This is an excellent time for helping people who are losers in society.

PERSONAL - TRANSCENDENCE: Making dreams concrete

This is a time when you will probably feel rather alone and isolated. Money may be short, and security even shorter. You are forced to develop your inner resources now, because outer structures in your life tend to dissolve. This is a good period for developing spiritual discipline, or making long-term plans for creative development and growth. But otherwise there is a tendency to be down-and-out, or on the fringe of society. Nevertheless you may feel moved to take more responsibility for those who suffer now, or to make some sacrifice for others. Avoid negative frames of mind, or tendencies towards alcohol or pill misuse.

Transformation

Pluto In Leo Retrograde

At birth this planet appeared to be moving backwards relative to the Earth. You will learn special lessons in connection with attachments to people and things from the distant past, and a turning point will arise, at some point in your life, in the matters described.

COLLECTIVE - TRANSFORMATION: Individual power
Pluto has an irregular orbit around the Sun which takes about 248 years. When Pluto is closest to the Sun it takes only 12 years to traverse a sign. When it is furthest away, it takes approximately 30 years. Its influence is felt collectively on a very deep level in society, bringing trauma, transformation and renewal in regard to the sign it is in. Individuals with their Ascendant in Scorpio may express this influence in a personal way, otherwise its effect is expressed as an underlying influence on a whole generation. Pluto was in Leo from 1693 to 1711, and again from 1939 to 1957. These were times of power politics with charismatic leaders wielding dictatorial power. This was a period in which power was concentrated in the hands of an elite, and when hero-figures played an important formative role on the national psyche. Entertainment became a new force to sway the masses, and a new freedom based on increased leisure put the emphasis on individual development and self-realisation.

If you express this influence in your personal life, you will have a forceful character and charismatic influence on others. You have

very strong personal convictions and principles, which you will express in an uncompromising way. Being a natural leader, you resent being bullied by anyone in authority, though you can be rather autocratic yourself. A series of identity crises during the course of your life - perhaps because of events concerning children or love-affairs - will lead to radical changes in direction as you redefine your goals in life and your attitude to personal power.

Pluto In 8th House

PROFESSIONAL - TRANSFORMATION: Releasing control
During the course of your professional life you will either wield great power on an economic level, or be at the mercy of those who do. If you have power, you tend to be secretive - even a little dictatorial. You may adhere to the doctrine of the survival of the fittest. You may be fanatically attached to economic principles, at times there may be great gains, at times great losses. You are good at disposing of resources, when this is necessary, and realising assets after economic collapse. You may be a power broker; perhaps you will even define yourself professionally by some crusade against power misuse. At some point in your life your economic foundations will collapse - but then, you are a great survivor. Perhaps this transformation will bring a greater interest in emotional issues and psychological mechanisms.

PERSONAL - TRANSFORMATION: Releasing control
You have the capacity to experience a great personal transformation during the course of your life when you harness the energy which is stored within you. Deep traumas or fears early in your life tend to absorb your energy and resources. You may fear being at the mercy of others, and may even generalise and project this fear on people or organisations in a position of power. It would certainly be foolish to tilt at the windmills of power in society. Greater satisfaction comes through an inner psychological transformation process. Intimate relationships tend to be marred by power battles and control. Sexuality in particular is characterised by your inability to let go and trust your partner by being vulnerable and powerless. You have to go to extremes to achieve satisfaction here. An unconscious fear of ego-death may inhibit release through sexuality, until you learn to transform primitive erotic drives into a demonstration of emotional giving.

Pluto Opposition Mercury

Please read page 9: "Mercury Opposition Pluto"

Pluto Square Mars

Please read page 14: "Mars Square Pluto"

Pluto Sextile Neptune

Please read page 23: "Neptune Sextile Pluto"

Pluto Quincunx N. Node, Pluto Semisextile S. Node

Though not especially strong, you will be able to feel the influence of this aspect under many circumstances. The connection between these two planets means that you tend to overcompensate in the areas described by being too helpful. This means that you unconsciously encourage other people to take advantage of you.

PROFESSIONAL - DESTINY: Survival in extremity
You emit an aura of power in your social relationships, and you may get involved with groups or organisations of a secretive nature which exert a powerful yet hidden influence over the masses in society. A role will be found for you at times of great upheaval, and you will often be called upon to preside over or

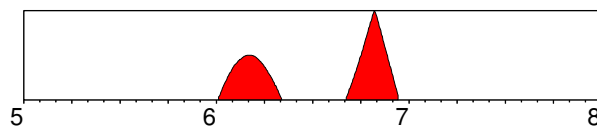
witness the forces of change which are completely beyond the control of normal institutions, when the hand of fate crushes the safe structures in society.

PERSONAL - DESTINY: Survival in extremity

Profound upheavals or staggering transformations can change the course of your life at key moments in your development. You will be exposed in one way or another to the destructive forces in society, or to the inner demons of fate, and this may force you to make ruthless decisions to ensure your survival. Archetypal memories of death or destruction can trouble your unconscious mind. You may also be exposed socially because you awaken anxiety or sexual undercurrents in others. You will be no stranger to loss, but you have no difficulty in turning your back on the past and starting anew.

Jupiter Transiting Square Pluto

1/6/2006 -> 12/12/2006



Major irritation factors arise as a result of this influence, yet if you use this period to initiate dynamic change you will be able to make dramatic progress in your life.

PROFESSIONAL - TRANSFORMATION: Power play

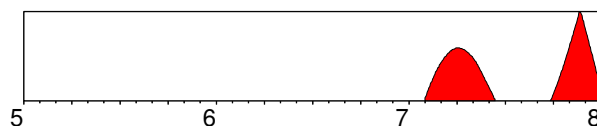
During this period you will be initiated into the use of power and secrecy in the professional sphere. This may be because you discover hidden factors, corruption or power misuse behind some professional facade, or it may be because you learn to harness your own personal power or psychological insight in your career. Whatever the circumstances you may feel a certain anxiety because of circumstances seemingly beyond your control. Make sure you are on good terms with legal and financial authorities, or at least cover your tracks if you aren't!. Big money can be involved during this period, involving large gains or losses, so make sure you have the best financial advice.

PERSONAL - TRANSFORMATION: Power play

There is a leap in your awareness of the power of the unconscious to shape your life at this time. You may choose to develop your emotional insights by learning more about psychology in one way or another. If you have any hidden anxieties or phobias you can expect them to be more acute or to come to the surface now. Even though this may be disturbing, there is a unique opportunity to understand the secret mechanisms of your mind and to eliminate the negative effect of repressions. You can become the intrepid explorer of some very dark territory indeed.

Jupiter Transiting Trine Pluto

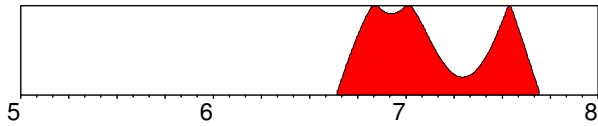
2/2/2007 -> 12/31/2007



Please read page 25: "Jupiter Transiting Square Pluto"

Saturn Transiting Conjunction Pluto

8/25/2006 -> 9/11/2007



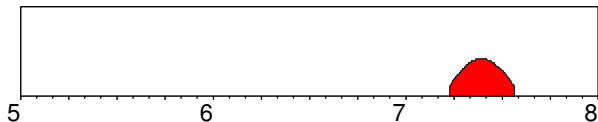
You can expect powerful change in this area, as you learn to integrate the following influence into your life.

PROFESSIONAL - TRANSFORMATION: Bonds on power
This influence may not be felt very strongly, unless you have strong Scorpio traits. This is a period when you are confronted with power manifestations in society, and it can be necessary for you to summon up reserves of strength and determination to handle situations which seem beyond your control. Take care in your dealings with police, tax authorities or underworld characters, as you are liable to meet people and groups who are in a position to humiliate you. In professional matters you have to take a closer look at what goes on under the surface. Eliminate any corrupt elements, and look more closely at your motivation when asserting your power.

PERSONAL - TRANSFORMATION: Bonds on power
Though sometimes rather subtle, this influence can release powerful elements in your unconscious mind. If you are a victim of emotional states such as jealousy and paranoia, now is the time to make an effort to deal with them. Deep-rooted psychological complexes which manifest as obsessive behaviour will surface now and the more you try to repress them, the greater power they will have over you. A sure danger sign is if you start accusing other people of evil behaviour, or if you feel that you are being shadowed or persecuted. Inner demons manifest in outer events now, yet solutions are to be found within your own being. You can contact archetypal forces now, for example through shamanism.

Neptune Transiting Opposition Pluto

3/26/2007 -> 7/26/2007



This extremely strong influence can bring change, dilemmas or separation. The likelihood of travel in connection with these issues is strong.

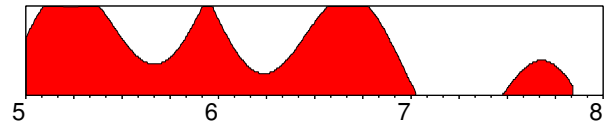
PROFESSIONAL - TRANSFORMATION: Dissolution of power
This influence is rather subtle in its effect, and will be experienced most powerfully by those who have their Ascendant in Scorpio. It can affect areas in your professional life where you experience anxiety, and where you try to force your way through in an unconscious, compulsive or fanatical manner. If control is an important factor in your life, you will lose the ability to exert this control. Learning to give in gracefully and accept the higher forces in society which guide collective life may be the right tactics now. On a positive note, this is a time when you can tune in to collective forces which steer human opinion. You can now understand and use the forces of marketing and propaganda, for better or for worse.

PERSONAL - TRANSFORMATION: Dissolution of power
This rather subtle influence - which will be felt most strongly by Scorpio types - can teach you a lot about the forces in the

unconscious mind on both a collective and personal level. Negatively you may experience some weird fantasies now which can fuel any latent paranoia. However this is an excellent period to learn visualisation techniques for defusing trauma or harnessing the power of the unconscious. Enormous forces can be channelled and released during this period, though these forces will manifest most strongly through your contact with underground forces in society. Take care to avoid becoming contaminated by lower elements, and purge yourself of useless fantasies.

Pluto Transiting Trine Pluto

1/1/2005 -> 11/4/2007



This long-term and formative influence will enable you to realise your creative potential in the following area. Try to make the most of the opportunities which now come your way.

PROFESSIONAL - TRANSFORMATION: Evolutionary change
This influence - which arises in the late thirties - confronts you with the need to reorganise in connection with the evolution of whatever you are concerned with professionally. You have to examine in what areas you use or misuse power, and to what extent you feel dominated by forces beyond your control. In the power struggle that follows you have to harness all your survival urges. You will learn that the need to prevail in life sometimes necessitates actions which have dubious morality - but you cannot afford to be sentimental.

PERSONAL - TRANSFORMATION: Evolutionary change
During this period deep unconscious processes rise to the surface to be dealt with by your conscious mind. It is an excellent time for getting to the root of personal problems which have haunted you for the last 35 years. Deep psychological issues which have been banished from memory now resurface, and you should have the capacity and strength to restructure these forces so that they no longer control you on a subconscious level.

Destiny

N. Node In Capricorn, S. Node In Cancer

PROFESSIONAL - DESTINY: Growing up
Achieving professional success in your case involves your overcoming dependent tendencies and a feeling of being vulnerable. Early in your career you may choose to work in a caring profession, or in a job which affords you security. You expect to be provided for and looked after. As time goes by you find that the price of dependence is a feeling of being stifled. An inner need to manifest your executive talents arises, and this will often involve a powerful emotional transition in which you demonstratively take responsibility for your life. At such times you may even wish to start out for yourself as your own boss, and you will manifest great determination and self-discipline in this process. New businesslike tendencies replace the vulnerable softness which previously characterised your nature.

PERSONAL - DESTINY: Growing up
You are strongly attached to the bonds of the past, and your family can play an extremely important role in maintaining feelings of dependence in you. At some point in your life these

bonds have to be cut, so that you have the opportunity to take responsibility for you own life. When young you are tempted to manipulate partners by appealing to their protective nature, and this results in your being held in a childish role. In reality there is a grown-up in you bursting to get out, and the sooner you manifest your maturity in this respect, the more satisfaction you will feel. Children and family represent something of a dilemma for you, perhaps because you instinctively sense the great responsibilities that parenthood will bring. Raising a family is easier when you make the transition from dependence to self-sufficiency. You are an emotional person, yet as you get older you learn that there is greater dignity in self-control.

N. Node In 1st House, S. Node In 7th House

PROFESSIONAL - DESTINY: Regain personal initiative
Finding the balance between whether to invest your energy in your relationships rather than personal development is a major life-theme for you. On a professional level this theme may express itself in the fate of important partnerships, where overdependence, and a tendency to compromise concerning your personal convictions, can lead to failure. Success may well depend on you having the courage to go it alone, although you may be well into your thirties before you learn this. You will learn that it is no use for you to play second fiddle, because this tends to paralyse your autonomy. You cannot let your professional fate rest in the hands of others, and this requires shouldering a leadership role or being independent.

PERSONAL - DESTINY: Regain personal initiative
You have a tendency to involve yourself at an early age in a fairly long-term intimate relationship. Whilst this at first offers you considerable security, later on the loss of personal freedom tends to grate. You will find that the more you give, the more you are taken advantage of. A turning point comes - particularly at the age of 37 - when you find you no longer can accept living on another person's terms. Happiness comes when you direct your attention to fulfilling truly personal needs, even at the risk of being thought selfish. By concentrating on self-development you achieve an inner balance which makes relationships more successful, and you break with inherited and old-fashioned attitudes about partnership.

N. Node Sextile Mars, S. Node Trine Mars

Please read page 15: "Mars Sextile N. Node, Mars Trine S. Node"

N. Node Opposition Uranus, S. Node Conjunction Uranus

Please read page 21: "Uranus Opposition N. Node, Uranus Conjunction S. Node"

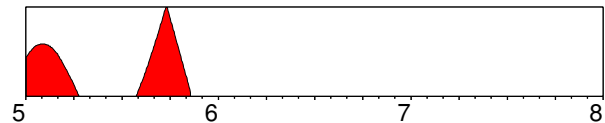
N. Node Square Neptune, S. Node Square Neptune

Please read page 24: "Neptune Square N. Node, Neptune Square S. Node"

N. Node Quincunx Pluto, S. Node Semisextile Pluto

Please read page 25: "Pluto Quincunx N. Node, Pluto Semisextile S. Node"

Jupiter Transiting Square N. Node, Jupiter Transiting Square S. Node 1/1/2005 -> 11/9/2005

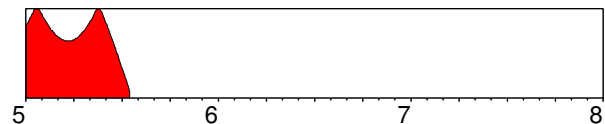


This is a time of tension and dramatic change which may be most apparent in your domestic life, or in your career. Use the time to make much-needed changes.

PROFESSIONAL - DESTINY: Understanding karma
You can expect an expanded circle of contacts at this time, with a special emphasis on people who are seeking influence on a large scale in society. Opinion-makers, advisers and foreigners can bring a new perspective in connection with future planning. You may feel that your destiny is interwoven with some larger plan. Greater awareness of the direction you wish your life to take can mean making a few adjustments. Do not let inflated ideas about your destiny or personal importance lead you astray.

PERSONAL - DESTINY: Understanding karma
This is a time when meetings have particular significance in terms of karma and your growth as an individual soul. You may have a powerful experience connected with some group activity now and gain greater insight into your soul and your fate as a human being. There is also a strong tendency to be drawn into a web of spiritual illusions - though you will surely also have rewarding experiences. You are drawn to partners who have a deep significance for you now, for good or ill.

Saturn Transiting Opposition N. Node, Saturn Transiting Conjunction S. Node 1/1/2005 -> 7/17/2005



This extremely strong influence can bring change, dilemmas or separation. The likelihood of travel in connection with these issues is strong.

PROFESSIONAL - DESTINY: Group responsibilities
This period is characterised by a professional commitment with a group and the responsibilities that this commitment involves. The interests of the collective may turn out to be more relevant for your career development than your own ambitions or desire for status. Older people in authority may impose limitations on your development, and you can experience a compelling need for greater self-discipline to deal with the demands made on you. The decisions made now can have an important formative effect on your destiny. Benefit comes through subordinating ego needs for the good of others, and accepting the hand of fate, as it moves in your career.

PERSONAL - DESTINY: Group responsibilities
This is a time when time will stand still for a while, so that you can take stock of your ambitions and goals in life and see where they have led you. It is a fateful period in which your responsibilities to others and your role in society can become very important. Some people feel that their life direction leads to a blind alley in these months, or that plans for the future are futile and empty. There is

benefit to be attained through inner spiritual discipline, as the hunger felt at this time can not be satiated by outer success.

Planetary Symbols and their Meanings

THE SIGNS

| | | | |
|---|-------------|------------------------------|-----------------|
| ♈ | ARIES | Spontaneous activity | Ruler Mars |
| ♉ | TAURUS | Consolidation, stability | Venus |
| ♊ | GEMINI | Duality, communication | Mercury |
| ♋ | CANCER | Receptivity, nurturing | Moon |
| ♌ | LEO | Self-realization, creativity | Sun |
| ♍ | VIRGO | Organisation, analysis | Mercury |
| ♎ | LIBRA | Balance, relating | Venus |
| ♏ | SCORPIO | Intimacy, penetration | Pluto/Mars |
| ♐ | SAGITTARIUS | Knowing, expanding horizons | Jupiter |
| ♑ | CAPRICORN | Responsibility, striving | Saturn |
| ♒ | AQUARIUS | Humanitarian, consciousness | Saturn/Uranus |
| ♓ | PISCES | Selflessness, spirituality | Jupiter/Neptune |

THE PLANETS

| | | |
|----|------------|--|
| #1 | THE SUN | Identity, individuality, the father |
| #2 | THE MOON | Instincts, the unconscious, the mother |
| #3 | MERCURY | Mentality, communication, siblings, travel |
| #4 | VENUS | Love, romance, partnership, values, women |
| #5 | MARS | Drives, sexuality, men, brothers, desire |
| #6 | JUPITER | Wisdom, vision, expansion, convictions, space |
| #7 | SATURN | Challenge, concentration, restriction, time |
| #8 | URANUS | Originality, renewal, revolution, eccentricity |
| #9 | NEPTUNE | Transcendence, spirituality, illusion, suffering |
| #: | PLUTO | Transformation, humiliation & power, underworld |
| #; | NORTH NODE | Destiny, group involvement, future potential |
| #< | SOUTH NODE | Past karma, deep experience, lessons learned |

THE HOUSES

| | | |
|------|-------|---|
| 1st | HOUSE | Self absorption, personal projection, appearance |
| 2nd | HOUSE | Values, self worth, finances and assets, security |
| 3rd | HOUSE | Travel, local network, siblings, communication |
| 4th | HOUSE | Foundations, family, ancestors, home atmosphere |
| 5th | HOUSE | Self-expression, children, identity security, play |
| 6th | HOUSE | Service, working environment, health, integration |
| 7th | HOUSE | Partnership, dealings with others, adversaries |
| 8th | HOUSE | Others' resources, inheritance, secret powers, death |
| 9th | HOUSE | Long-distance travel, beliefs, higher education, law |
| 10th | HOUSE | Ambitions, authorities, goals, professional expression |
| 11th | HOUSE | Social affinities, groups, friendships, political visions |
| 12th | HOUSE | Withdrawal, isolation, the divine, the inner worlds |

ASPECTS

| | | |
|---|--------------|--|
| ♌ | CONJUNCTION | Fusion of energy, unity, singularity |
| ♍ | OPPOSITION | Separation, projection, split, polarity |
| ♎ | TRINE | Harmonious resources, creativity, insight |
| ♏ | SQUARE | Disharmony, diverging needs, conflict |
| ♐ | SEXTILE | Mental and social resources, creative harmony |
| ♑ | QUINCUNX | Servility, compulsiveness, lack of integration |
| ♒ | SEMISQUARE | Hidden tension, selfish antisocial tendencies |
| ♓ | SESQUISQUARE | Compulsive behaviour, power trips |
| ♈ | SEMISEXTILE | Either material or spiritual drive for integration |