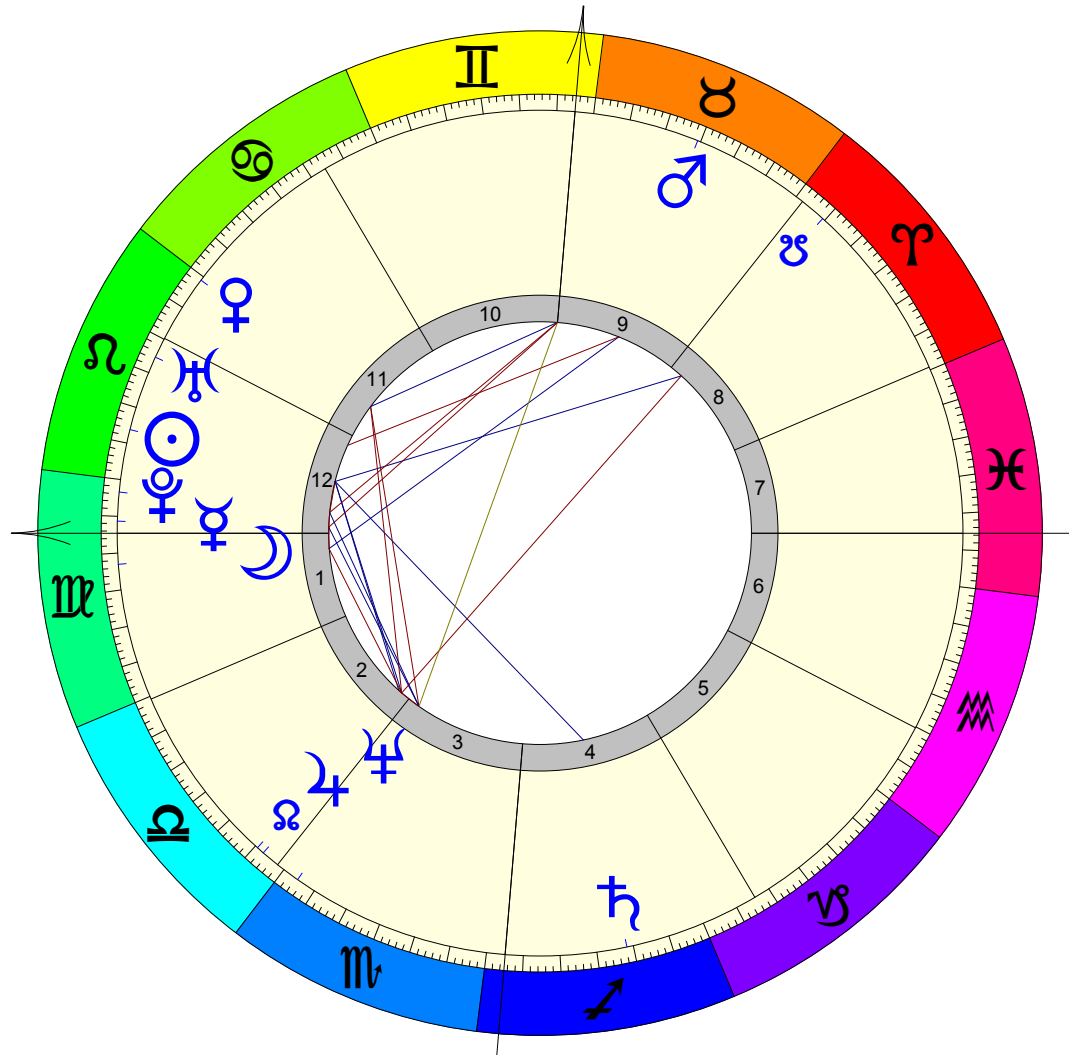


Madonna Ciccone	Saturday	Placidus	Medium Orbs
	8/16/1958 7:00:00 AM	Time Zone: 5:00W	Summer Time: 0:00
			43N36 83W54

☉	Sun
☾	Moon
☿	Mercury
♀	Venus
♂	Mars
♃	Jupiter
♄	Saturn
♅	Uranus
♆	Neptune
♇	Pluto
♁	N. Node
♂	S. Node
♈	Aries
♉	Taurus
♊	Gemini
♋	Cancer
♌	Leo
♍	Virgo
♎	Libra
♏	Scorpio
♐	Sagittarius
♑	Capricorn
♒	Aquarius
♓	Pisces



♌	Conjunction
♍	Semisextile
♎	Semisquare
*	Sextile
□	Square
△	Trine
▢	Sesquisquare
⋈	Quincunx
♁	Opposition
A ^{SC}	Ascendant
D ^{SC}	Descendant
M ^{CO}	Medium Coeli
I ^{CO}	Immun Coeli
R _X	Retrograde

A ^{SC}	7.16	♍
2	0.23	♎
3	28.55	♏
I ^{CO}	2.32	♐
5	7.48	♑
6	9.52	♒
D ^{SC}	7.16	♓
8	0.23	♈
9	28.55	♉
M ^{CO}	2.32	♊
11	7.48	♋
12	9.52	♌

	☉	☾	☿	♀	♂	♃	♄	♅	♆	♇	♁	♂	A ^{SC}	M ^{CO}
☉					*	△				♂	*	△		
☾			♂	△	♎	♏								
☿		5.50		3.54	0.07									
♀										*	♂		♂	□
♂					4.10					□	1.45			*
♃														
♄										□	2.42			
♅										♂	5.55	♂	♁	
♆												♂	♁	
♇														
♁														
♂														
A ^{SC}										*	0.35			♎
M ^{CO}														♏

☉	23.06	♌		12
☾	11.29	♍		1
☿	5.39	♎	R _X	12
♀	0.32	♏		11
♂	15.22	♐		9
♃	26.23	♑		2
♄	19.08	♒	R _X	4
♅	12.41	♓		12
♆	2.18	♈		3
♇	1.42	♉		12
♁	25.20	♊		2
♂	25.20	♋		8

Life Path

Ascendant In Virgo

PROFESSIONAL - LIFE-PATH: Efficiency

Your professional life means a lot to you, and you work hard and conscientiously to become well-integrated in your whatever field of interest you choose. You are more concerned with efficiency and service than with getting personal recognition, and this makes you an asset in any working team. You labour industriously behind the scenes to make things function, and still find time to look after the needs of your colleagues. You have special abilities as regards service functions, organisation and analysis, and health matters, and are especially concerned about cleanliness and purity. You do however have a tendency to underestimate yourself, never being quite satisfied with your efforts - or for that matter the efforts of others. As you are strongly motivated to create order, you tend to focus on disorderliness in others. Learning to relax and be content with your efforts takes the pressure off you.

PERSONAL - LIFE-PATH: Efficiency

One of your better qualities is your self-deprecating nature. You are often willing to put others first and are generally quite content to take on a low-profile role, in which you concentrate on getting everyday life to function smoothly for all concerned. You are both critical and self-critical, and may often feel that life is hard work - a never-ending stream of tasks waiting to be done. In contrast your partners seem to let things just flow along in a disorganised, even lazy manner. This is of course a natural consequence of your own over-diligent manner, in which you tend to take on the duties of others. You can learn a lot from partners by being content with, and accepting, things as they are. It can be a great satisfaction for you to develop greater health consciousness during the course of your life, as you have natural abilities as regards nutrition and the influence of thoughts and emotions on physical health.

Ascendant Conjunction Mercury

This aspect is extremely powerful in your horoscope; every action you take will be coloured by this energy.

This connection between two planets shows a fusion of two principles for good or ill. You integrate quite different energies and express them as one process. This manifests as a strong personal character trait.

PROFESSIONAL - LIFE PATH: The messenger

You are a person of many talents, chiefly in the field of information and communication. Meeting people and creating contacts are a part of your professional life-style - you have a message to deliver, and you do so in a flurry of activity. Intelligent and informed, you keep yourself up-to-date on all the latest developments.

PERSONAL - LIFE PATH: The messenger

You are easy to make contact with, and always willing to exchange the time of day with anyone you meet. Easily distracted, you can find yourself getting involved in many things at the same time - but then you hate to be bored. You give the impression of being a person on the move. Being gregarious and talkative, you are an excellent catalyst for getting people together. You fascinate people with your ideas.

Mercury In Virgo Retrograde

Because this planet was retrograde at your birth, you will have an instinctive knowledge of, and attraction to, the following traits and activities. You will tend to be introvert in these matters, and pursue your own individual path in strong contrast to the path chosen by others.

PROFESSIONAL - MENTALITY: Create order

Few people possess your capacity to study and analyse information and present things in such an understandable and factual matter. You can develop considerable expertise in several different mental areas, and you will tend to cultivate a perfectionism in these areas. Your love of detail may mean that you get bogged down, and this can perhaps prevent you implementing your ideas. You are strongly motivated to be of service to others. This can however mean that people will dump tasks on top of you, so it is essential for you to discriminate between what you really want to occupy your mind with, and to curb over-helpful tendencies. You function well in an administrative position, where you have to make concrete judgements about what is useful, and what isn't. Natural secretarial skills are a resource you derive benefit from.

PERSONAL - MENTALITY: Create order

You are something of a perfectionist and have a helpful - if somewhat critical - manner. You have an eye for details and it pains you to see something out of place or done inefficiently. As such you tend to involve yourself in many daily tasks, smoothing out the rough edges and getting things to function. You can exhaust yourself with having too much to do. You are businesslike in the way you express yourself, and you may have a rather chiding tone of voice. At best you are very supportive and a great helper, at worst you tend to undermine others with negative comments. Generally however, you prefer to keep a low profile, both as regards your opinions, and your many good deeds.

Mercury In 12th House

PROFESSIONAL - MENTALITY: Mental communion

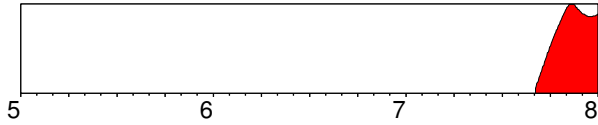
You have some unusual mental abilities because you are able to harness your intuition and tune in to signals and ideas which other people are not sensitive to. You function best in situations where you can have a low profile mentally and operate behind the scenes with your ideas. You appreciate having the mental privacy to get on with your business without being disturbed. Being sensitive to mental pollution - the gossip, chattering or superficiality of others - you withdraw into the world of your own imagination. Here you can think up many ideas and projects which can bring professional success - particularly in connection with marketing, advertising or the media. You may also have artistic, creative or musical abilities.

PERSONAL - MENTALITY: Mental communion

The private world of your mind and your thoughts is very important for you. Perhaps as a child you were forced to retreat into your own fairytale world - at least now you can be quite happy with your own company. You are the type who keeps a private diary in which you commune with yourself. In partnership matters it is important that your loved one allows you to withdraw from time to time - but at the same time there will be a lot of misunderstandings - not to mention a growing isolation - if you do not take the trouble to reveal a little of what goes on in your mind. You have a number of spiritual talents - your mental receptivity means that you can derive great benefits from walks alone in nature, and you may even be open to some form of spiritual communication. Poetry, music and art can also be wonderful

areas of refuge to you.

Saturn Transiting Conjunction Ascendant 9/5/2007 -> 12/31/2007



Major changes will occur in the area of your life described here and you will integrate new personal behaviour and attitudes in your life.

PROFESSIONAL - LIFE-PATH: New life direction

Though this period is most relevant as regards finding a new direction in life, you will be relieved to be able to define new goals in life after a period of confusion. You are probably feeling somewhat tired and your self-confidence may be at an all-time low, yet the determination to spend time on your needs and to develop decisiveness and strength will lead to long-term gains. Do not expect to be clear about exactly what it is you want to do yet - it is a time to turn your back on the past and make tentative plans for the future.

PERSONAL - LIFE-PATH: New life direction

An inner discontent with your life-style inspires you to re-examine the direction your life is taking, and this in turn will lead you to analyse any important relationships in a critical manner. You do not want to waste time on superficial involvements, yet at the same time you know that you should either commit yourself or be alone. You can be hard on yourself in this period, yet you discover new strength and self-sufficiency.

Identity

Sun In Leo

PROFESSIONAL - IDENTITY: Develop self-appreciation
Building a strong sense of personal identity is the greatest priority in your life. You will seek to measure this by the respect or admiration you evoke in others, and by the evidence shown by the results of creative efforts. You have warm human qualities which under normal circumstances ensure that you are at the centre of events and at the focus of other people's attention. It is extremely important for you to feel respected professionally. Prestige and recognition are basic career needs, and with your natural leadership abilities you have the capacity to inspire others through your example. You have a natural affinity for things which exude quality, and you can set the style in your place of work. As long as you feel appreciated by others, you will function well professionally. It grates a little if you have to take orders from others, so you quickly gravitate to leadership positions.

PERSONAL - IDENTITY: Develop self-appreciation

Your relationship to your father has direct relation to your degree of self-confidence. Although you can be warm, gallant and charming, you have a strong need to dominate in partnerships and have a tendency to be attention-grabbing precisely because of insecurity in this area. You are romantic, and not averse to the occasional affair to give your ego the shine it needs. Great challenges in your life occur in connection with your sense of identity. In these periods of crisis you will tend to radically change your image. Your exaggerated sensitivity to the kind of impression you make on your loved one makes way, as you mature, for a stronger sense of self-security based on inner convictions. It is at

these times that false pride and elitism bite the dust, and your natural nobility emerges.

Sun In 12th House

PROFESSIONAL - IDENTITY: Dissolution of ego

You have the capacity to take on many roles in your life, assuming the professional guise which is expected of you under any given situation. Whatever kind of success you have, you experience difficulty truly identifying with or believing in your role. It is not easy for you to take ambition and striving seriously because you are rarely inspired by the allure of power, prestige or material goals. You seek a sense of personal significance and meaning in your life, and personal glory does not give you this. You would experience greatest satisfaction in a role in which you can express your concern for others, or in a job which allows you the peace to commune with your own feelings - perhaps a creative job of some sort. You work best when you are undisturbed or can operate behind the scenes or removed from society in some way.

PERSONAL - IDENTITY: Dissolution of ego

You have the capacity to take on many roles in your life, assuming the professional guise which is expected of you under any given situation. The greater part of your life is spent in a search to find or define your identity. As a child you probably felt a sense of isolation, and in relation to your father you may have felt that he was remote, a dreamy figure who was difficult to get into contact with. Later in life you also personally feel a sense of remoteness and often find that the goals you pursue lead to disappointment or a sense of meaninglessness. This inner dissatisfaction motivates you to go on an inner journey to understand the nature of yourself. You can find meaning when you withdraw from the world for a period of time - too much contact with others for too long can be confusing for you. You would benefit greatly from meditation, because a spiritual practice or creative work enables you to reach the core of your being. When you are there you discover your place in the cosmos, and the cosmos's place in you. For you to truly find yourself, you must lose yourself. You can discover the interdependency of humanity and the universe.

Sun Sextile Jupiter

You will often feel the influence of this aspect, though stronger influences may predominate in other areas of your chart. When reading the following description, please bear in mind that you are a fast learner and overcome any difficulties involved very quickly. You can expect to use this aspect constructively and harmoniously.

PROFESSIONAL - IDENTITY: Insight

One of your greatest professional assets is your optimism and ability to envision and empower the future. You have the capacity to occupy a high profile position in which your charisma and personal identity play a leading role. As you are strongly motivated to acquire insight in your life, and rather philosophically minded, you would function well as an advisor, counsellor or simply as a leader figure, whom people turn to for advice and a sense of direction. It is essential that your profession offers you the opportunity for growth. You need wide horizons and you will probably find that you travel a lot in your work. You are cosmopolitan by nature, and enjoy the cultural aspect of your work. You have very strong convictions indeed, and may be rather morally high-minded. This side of your character can lead to ideological confrontations with influential people. You have great difficulty in admitting your mistakes, and although you have vision and prophetic sense, you can be wildly optimistic about the

future, and are often to be seen chasing dreams of prosperity. Inasmuch as vision is necessary for success, you will generally reach your goals, but greater attention to planning, more realism and more patience would help you consolidate your position.

PERSONAL - IDENTITY: Insight

You are an inspiring person with a wonderful capacity for positive thinking and looking on the bright side. You are a seeker of wisdom, and this search will lead to many studies and many travels to widen your intellectual horizons. During the course of your life, you acquire a set of opinions and personal convictions which play rather a dominating role in your environment. Gaining understanding of the meaning of your own life is important, and you identify strongly with the conclusions you come to. You have a great need to find a mentor or wise person who can instruct you, but few people will have the capacity to impress you on an intellectual or spiritual level. If you do not cultivate a sensitivity to the ideas of others you can become opinionated and arrogant. Others can find you mentally dominating or over-forceful in discussions. There is more dignity in giving your opinion only when asked, than in foisting your beliefs on others. Generally however, you will create a good impression because of the wide span of your mind, and a tolerant attitude towards others.

IDENTITY - IDENTITY: Insight

It is very likely that your father was a man of strong beliefs and convictions. These convictions may have been cultural, political or religious, and you will have had trouble as a child in standing up to the intellectual challenges your father set you. At worst he will have pontificated a lot and have been very unreceptive to argument. At best he will have been a jovial, humorous and warm figure, who really encouraged you to develop intellectually. He may have been a well-travelled man, and expanded your horizons with stories from foreign climes. You may have felt put in the shade by his larger than life character when young, but this will have inspired you to live up to some grand vision of yourself later in life.

Factors in your childhood have given you a hunger for knowledge and understanding which can be quite desperate at times. You are concerned about being able to define your identity and explore the boundaries of your being. With this aspect there can often be some anxiety about establishing the circumference of your identity, and manic phases can arise in which the boundary overflows into other people, nature, the cosmos. Often some kind of religious philosophy is important, because you discover that your ego alone is not sufficient in itself to explain the mystery of existence.

Sun Trine Saturn

Though not especially strong, you will be able to feel the influence of this aspect under many circumstances.

Please bear in mind that the contact between these planets is harmonious, which means that you will rarely be troubled by their negative influences. They represent a resource you can draw from.

PROFESSIONAL - IDENTITY: Winning self-esteem

You are a hard-working and ambitious person with a strong drive to prove yourself in society. There may however be difficulties with authorities, despite your desire to live up to the expectations of society. The first 30 years of your life will bring a great deal of obstacles to success, but you will learn important lessons and ultimately develop a self-sufficiency and discipline which lays the foundation for success later in life. It is important for you to overcome negativity or pessimism concerning the future. Not all success is won by hard work alone. You are often more motivated

by the fear of failure than the promise of reward, and this can hold you back from realising your full potential. If all goes well you will acquire more and more responsibility during the course of your life - and you deserve it. You are conscientious and take your responsibilities seriously. You are the kind of person other people can rely on. You would rather be the power behind the throne, than have a high profile yourself. Remember to take time to enjoy the fruits of your efforts, instead of continuously driving yourself onwards.

PERSONAL - IDENTITY: Winning self-esteem

You are a rather formal person who takes life seriously. Childhood experiences - especially the relationship with your father - has undermined your self-confidence and made you reluctant to stick your neck out. You are more likely to bury your "talent" than gamble with it. You have a strong need for approval, but as a child love and approval was always conditional on your performance. You have been more appreciated for what you did, than for who you are. Later in life you tend to judge yourself harshly, and you have a bad conscience about enjoying life and relaxing. You tend to be too dismissive when offered love and affection, and rather severe when giving it. There may be authoritarian tendencies and a lack of flexibility as regards rules. Nevertheless, you are a person who can be trusted. You have high principles, and as you do not indulge expectations of the easy life, you work hard to build up a secure structure in life for those you hold dear.

IDENTITY - IDENTITY: Winning self-esteem

Your relationship to your father was probably strongly affected by hard discipline and high expectations. The bond may be strong, but characterised by your efforts to win his approval. If you got good grades at school, your father will have expected even better. Naturally as you grow up you integrate a severe sense of values which is a strong motivational factor for achievement. You become your own harshest judge.

Actually you are born with the need to create a strong internal structure and set of rules for your life - you evoke behaviour in your parents so that this need is fulfilled. You expect to be disciplined. Furthermore you are unreceptive to praise, so that when people come with favourable comments on your work and deeds, you have the tendency to play down your efforts in a dismissive manner. People learn that you do not want recognition, even if you think you do. The only kind of recognition and acceptance that really works for you is your own - yet as you judge yourself hard, this rarely comes. You are, then, your own master, so why not try giving yourself some rewards. Internal praise has a very healing effect on you, and this is a question of confronting the inner voice of guilt and enlisting its support to make you strong.

Sun Conjunction Pluto

This aspect is of medium strength and its influence will often be felt, though not acutely.

Two energies are unified into one in this planetary aspect, and you will express this energy in a very personal way, for good or ill depending on other factors in your chart.

PROFESSIONAL - IDENTITY: Transformation of identity

It is important for you to make a strong impression on people, and you invest a lot of energy in this - more than you are aware of. Much can be gained by toning down your personal energy. You are suited to positions requiring the use of power and psychological insight. Whatever you do, you like to be deeply - sometimes fanatically - involved. This may often lead to battles of will, and you tend to win, basically because you cannot

contemplate personal defeat. More flexibility would actually benefit you and help you avoid tiring power games. Personal power is a natural asset - as you will discover after a number of significant personal crises which lead to a reevaluation of your role. These crises are centred around achievement at all costs, or fanatical attachment to a particular role which outlives its meaning for you. When you learn to tone down your sensitivity about self-esteem, and invest your considerable willpower into projects which really mean something to you, and to others, you can achieve success. You may have a talent for psychology or dealing with the powers of the unconscious.

PERSONAL - IDENTITY: Transformation of identity

Early personal experiences have made you sensitive about your identity, and anxious about self-esteem. However this means, paradoxically, that you often overwhelm others with your presence. Thus you tend to be a dominating figure in intimate relationships. You need a partner who is not superficial and who shares your intense approach to life. To achieve harmony here you should relax instead of asserting yourself, otherwise relationships will become very exhausting. It is important to realise that power battles are related to inner fears about your identity. Women with this influence will often be attracted to a dominating man, only to find that he does not match her own strength which was acquiring through trying times in childhood. More intimacy can be achieved by daring to show vulnerability.

IDENTITY - IDENTITY: Transformation of identity

It has not been possible for you to cement any truly deep bond to your father. Perhaps he disappeared when you were young, and a stepfather took his place, perhaps he was at home but unreachable or distant in some way. Because intimacy was impossible to attain, you feel an inner chasm of emptiness connected with your identity.

You have felt that you were not recognised as an individual - hence your deep need to manifest yourself strongly later in life. Although some of the fault almost certainly lies with your father, you have a tendency to compound the problem by withdrawing yourself totally when you feel ignored or unappreciated. This was your way of protecting yourself psychologically as a child, but in the long run these tactics lead to a profound alienation. The enormous efforts you make to gain self-acceptance ultimately lead to great personal power and psychological insight. Psychic or intuitive powers can enrich your life and give strength to others.

Sun Sextile N. Node, Sun Trine S. Node

You will often feel the influence of this aspect, though stronger influences may predominate in other areas of your chart. When reading the following description, please bear in mind that you are a fast learner and overcome any difficulties involved very quickly. You can expect to use this aspect constructively and harmoniously.

PROFESSIONAL - DESTINY: The illusion of being

There may be a number of advantages for you in assuming a high profile in connection with specific groups of people. You may be elected as a figurehead, and your personal character can filter down to those you are connected to and have a profound affect on their lives. How to deal with the ensuing recognition or fame may, however, be something of a dilemma for you. Victories can ring hollow, and honour may bring disillusion, although you have a role to play in other people's eyes.

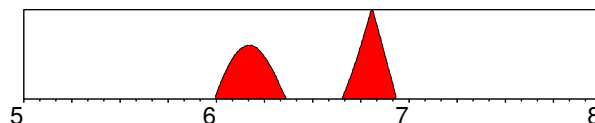
PERSONAL - DESTINY: The illusion of being

Contacts with other people will play an important role in your

search to get into touch with your inner identity. Father figures - through their presence or through their disappearance - will force you to ask a lot of questions about the nature of your existence, and this will in time lead to new spiritual growth and vision. Influential people and - later in life - spiritual authorities, may be eclipsed through sudden inner realisations. Times of inner darkness alternate with the blinding light of Truth.

Jupiter Transiting Square Sun

12/31/2005 -> 12/7/2006



This is a time of tension and dramatic change which may be most apparent in your domestic life, or in your career. Use the time to make much-needed changes.

PROFESSIONAL - IDENTITY: Creating your future

During this phase of rising self-confidence you can expect your plans for expansion to take off. You should be thinking positively about the future now, visualising how you would like things to be as vividly as possible. Your power to get what you want is at its highest, so start expounding your visions of a bright future.

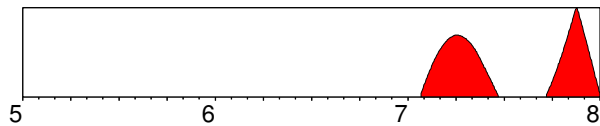
Remember: you get what you focus on, so focus on what you want.

It is favourable to expand into foreign countries; higher education, public relations and insight-enhancing projects will also bring success. Whatever you do, it is essential that it has depth and meaning for you. Don't waste important time on trivial matters - success is about the quality of life and making an impact with the essence of your own identity. If necessary take time off from work to build up a new vision for your future. If you have any legal problems, you will be confronted with them now so ensure that you are morally unassailable. And don't over-estimate yourself and your capacities. Make sure your plans are within the boundaries of reality.

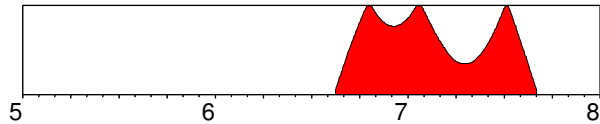
PERSONAL - IDENTITY: Creating your future

During this phase of your life you will be given the opportunity to find a new sense of meaning in your existence. Bubbling up from within, you have the chance to release a new energy and enthusiasm based on a sense of your personal relevance to this planet. Travel abroad and contact with people you respect for their intellectual and spiritual capacities will now expand your world-view. Knowledge and understanding will enable you to build up a broader moral base with greater insight and tolerance.

This is a very favourable time for religious growth if you are so inclined, or philosophical and intellectual insight. In many ways the world opens to you and reveals its gifts and blessings for you to enjoy. Take care as you sample the pleasures of this cornucopia and don't overestimate yourself - personal hubris will be punished and you may find yourself coming down to Earth with a bump.

Jupiter Transiting Trine Sun**1/27/2007 -> 12/31/2007**

Please read page 6: "Jupiter Transiting Square Sun"

Saturn Transiting Conjunction Sun**8/17/2006 -> 9/2/2007**

Major changes will occur in the area of your life described here and you will integrate new personal behaviour and attitudes in your life.

PROFESSIONAL - IDENTITY: Long-term strategy

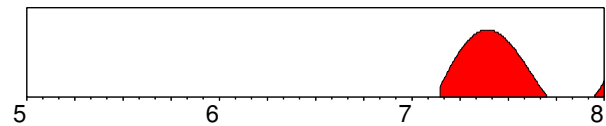
You can use this period to rise to the many professional challenges in your life and create the foundations for lasting growth. This is no easy time; many difficulties arise and you will have to work harder and shoulder more responsibilities. Authority figures make demands on you, seemingly without giving you any recognition. If you try to avoid commitment now, you are likely to be dogged by worries and problems. Your self-confidence may be low, and you may feel that you cannot live up to the expectations of others. Time will show that you can overcome difficulties and achieve goals.

Planning and strategy is of the essence, and it pays to plan months ahead and to tighten up schedules, working to realistic deadlines in a committed manner. By completing your work in stages and dividing large projects into smaller sections, you will find that you can handle enormous responsibility. You will not get something for nothing now, but hard work will be rewarded in the long term, so roll your sleeves up and get down to it.

PERSONAL - IDENTITY: Long-term strategy

At the beginning of this phase you will probably not be feeling so good about yourself. You may feel that you do not get enough - or don't deserve - recognition. There is a strong inner feeling that you must pull yourself together and do something worthwhile, and the sooner you do this, the better you will feel. There is a general feeling of being weighed down by burdens, and there may be a lot of pressure to live up to the expectations of others.

It is time to take responsibility for your own life and to define new goals, whilst you can send a strong signal to other people - parents in particular - that you can look after yourself. By rising to the challenges of the time, you can develop a strong inner feeling of self-satisfaction, based on the results that come from hard work and effort. You will be facing central issues concerned with identity and self-sufficiency, and will emerge from this period as a stronger and more self-reliant person.

Neptune Transiting Opposition Sun**2/24/2007 -> 12/31/2007**

Very strong tensions will occur in your life in the following area. Other people will impinge on your life and force you to adjust.

PROFESSIONAL - IDENTITY: Refining the spirit

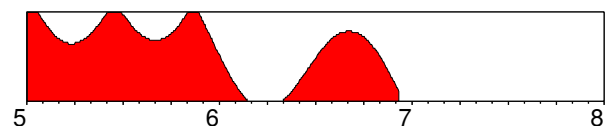
As this is a period of self-examination and contemplation, you may not be very motivated professionally. You cannot allow yourself to be the slave of your ambitions now. You have to ask yourself the question: How can my job live up to my long-term ideals about myself and my capacities as a human being? The yardstick as to whether what you are doing is the right thing is the inner feeling of dissatisfaction that wells up from within. Let this guide you in your search for meaningful activity.

The direction you take now is decisive for your long-term spiritual health, so take your time. Knowing what you don't want to do is an important first stage, later you will find something which satisfies every part of your being. This is a time to create room for musical, artistic or creative impulses. Your interest in fellow men and women may inspire you to be more socially involved. The urge for service and even sacrifice is strong.

PERSONAL - IDENTITY: Refining the spirit

This is the most important time in your life for spiritual growth and self-realisation. At the onset of this period you may feel a dissatisfaction - even a pointlessness - with your existence. No matter what escapist activity you pursue, there is a nagging feeling of meaninglessness which pervades all areas of your life. You have to take the consequences of this and seek to enrich your daily life. Spiritual interests and meditative or creative activity are favoured now, and you would benefit from contact with a person more spiritually aware than yourself.

No partner will be able to alleviate your thirst for existential significance now. Unrealistic expectations concerning loved-ones will surely lead to disappointment, as the bubbles of your private illusions burst. By directing your gaze inwards and understanding the subtle inner processes of the mind, you can achieve a new understanding of your life. The essence of this is that you are alone, and that the world is a stage for your projections. It is important that your acting is good if you would like some applause when you get to heaven.

Pluto Transiting Trine Sun**1/1/2005 -> 12/7/2006**

This is a very beneficial influence, though you may not be consciously aware of the process. Creativity and travel are favoured as you expand your capacities and sphere of influence.

PROFESSIONAL - IDENTITY: Personal transformation

This is an intense period in which you are under considerable personal pressure. You will radically redefine your identity at this time, so if you identify strongly with your career, you can expect fundamental restructuring of your goals. This is the time to sort out basic issues, as you do not want to waste valuable time on work that does not interest you. If you are dissatisfied with your

job, you will now feel that it has no future whatsoever. However you will also feel that there is no alternative but to continue. But there is. You have to take a jump in the dark without expecting any guarantees whatsoever. When you jump, you will land in one piece, but old structures must be destroyed and a new foundation cleared, before you can start anew.

Leadership issues will be paramount. If you have an executive position, you will want to totally change your role. Leaders around you may fall from power. After this exhaustive process is over, you will have discovered new depths to your being, and buried talents will have risen to the surface.

PERSONAL - IDENTITY: Personal transformation

This is the major time in your life in which you undergo a deep, transformative purging of your identity. The image of yourself you have cultivated in the past, and the ideas you have had about yourself, will now be cast off - you have simply outgrown your previous self. You may feel exhaustion, with a strong sense that old goals are dead. So now it is just a question of burying them and discovering what you really want to do, no matter what it costs. Crises will lead to self-examination. Layer after layer is peeled off, until you come to the core of your being. This can be a very trying psychological process. You may feel that you are in a dark tunnel, with no hope of light at the other end. Your trials may seem to go on for ever, but within a year you will have experienced a profound transformation and developed a profound insight into yourself.

Therapy or psychological interests are favoured at this time. You will discover your personal power. Women who have lived out their identity through their father or partner will cast off the chains of their projection. Powerful men are eliminated from the consciousness, as you assert your own identity.

Emotions

Moon In Virgo

PROFESSIONAL - EMOTIONS: Systematise daily life

You have a talent for analysis and for working hard and efficiently. Employment matters are of great concern to you, as are your personal relationships with the people you work with. Fluctuations and changes in this area will bring a number of difficult experiences, and contentment here comes with your ability to accept the value of both your own and other people's efforts. Being something of a perfectionist, you can exhaust yourself with trivialities. However you get a good deal of pleasure out of being helpful by sorting out other people's problems, and you do this in an unassuming way, without demanding recognition or appreciation. Of course this can mean that your helpfulness is misused, so that you end up doing too much for others and not enough for yourself. Maturity comes when you develop discernment concerning when to help, and when not to.

PERSONAL - EMOTIONS: Systematise daily life

You have a talent for analysis and for working hard and efficiently. You are a busy and conscientious person, with a love of detail and an ability to organise your daily life. There may be a trace of self-criticism, perhaps due to the atmosphere in which you were brought up. This leads to a tendency to analyse yourself and others and as such you are constantly aware of the imperfections around you. You do not feel comfortable when there is disorder around you, so you tend to occupy yourself a lot of the time trying to create a comfortable and efficient environment. Generally however, partners benefit from your kind, concerned and helpful nature. Learning to relax and avoiding criticism would help you enjoy life more.

Moon In 1st House

PROFESSIONAL - EMOTIONS: Showing care and concern
As a person for whom emotions and attachments are central to your view of life, you tend to show your feelings openly. You are deeply moved by emotional issues and this may manifest on a professional level as a caring job which utilises your ability to tune in to the needs of others. You form very strong bonds to the people to whom you are close. As trust and intimacy are primary concerns you may choose to work in a family business. There is a talent for working with food, property and the sea, or you may be involved with the public in some way. You are extremely good at tuning in to the moods of others, and have a natural instinct for catering for their needs.

PERSONAL - EMOTIONS: Showing care and concern

The bond to your mother and family has a powerful influence on your development for good or ill, and some of the major developments in your life will arise in connection with the family. You instinctively know how important feelings are to your personal development. Some people may see you as over-emotional or sentimental, but you know how to provide a truly nurturing environment for others to grow in. You have a powerful impact on your surroundings through your moods; indeed there may be a childish immaturity in this area. You may exhibit too much dependence on others, and are too attached to the past. Nevertheless other people will experience you as caring and giving.

Moon Conjunction Mercury

You will often feel the influence of this aspect, though stronger influences may predominate in other areas of your chart.

This conjunction shows a fusion of energies in you. Both the positive and negative sides of this aspect will be an integral part of your character.

PROFESSIONAL - EMOTIONS: Emotional awareness

You have great persuasive talents because you make an emotional investment in everything you say. At its best you can use these communicative talents to sway the feelings of the people around you - obviously a great asset when speaking to a public. You know how to tune in to the mood of the crowd and have an instinctive talent for saying the right thing. You need to be passionately engaged in your work, and function best in a role which gives you human contact. You work better with people than with things, but there is good business talent, especially as regards property. You are not an analytical type, and your judgements are easily swayed by your feelings. Thus you are easy to read, and will often stumble verbally, when you encounter conflict. You would find success in a career in which you utilised your talent for listening and speaking to people.

PERSONAL - EMOTIONS: Emotional awareness

You are a person who likes to communicate on an intimate level with those you are close to, though you have difficulty opening up to those you do not know well. Other people are comfortable entrusting their thoughts and feelings to you however. Your word and tone of voice are always tinged by your emotions, and this ensures you a good audience. Your emotions tend to swing a lot, and when you are feeling negative it can be very difficult for you to express yourself clearly. Under extreme emotional conditions you will be rather irrational. You have probably been profoundly emotionally affected by sibling relationships, and even now may have a powerful emotional bond to a brother or a sister. Your school years will also have had a great emotional impact on you, for better or worse. You are extremely sensitive to being criticised or misunderstood on a mental level. In many ways you are able to

build a mental bridge between the conscious and unconscious mind, clarifying emotions through mental awareness.

Moon Trine Mars

Though not especially strong, you will be able to feel the influence of this aspect under many circumstances.

Please bear in mind that the contact between these planets is harmonious, which means that you will rarely be troubled by their negative influences. They represent a resource you can draw from.

PROFESSIONAL - EMOTIONS: Temperament

You have a dynamic and forceful personality, and generally get your way in your professional dealings. Your greatest enemy is your temperament - you get angry easily, and when you get angry, you take ill-considered actions. So if your job involves dealing with the public, there will tend to be a lot of conflict. You may however function well if your job entails the need to confront people and get things done, but not if it involves diplomacy or sympathy. You are impatient, but on the other hand you tend to invest your heart and soul into your work and get things done quickly and efficiently. However, you create an atmosphere of tension around you, and are extremely sensitive to criticism. You often imagine attacks which do not actually take place, instinctively going on the offensive, or defensive, to deal with supposed threats. Obviously this kind of reaction evokes the very kind of attack you are seeking to avoid. Only by taking a long, cool look at your assertive nature and by developing greater sensitivity and calm as regards others, can you hope to win goodwill in your professional life.

PERSONAL - EMOTIONS: Temperament

You were brought up in an atmosphere of tension which has made you constantly on guard. Perhaps your mother was an unusually aggressive woman, or perhaps there were many struggles in your family life. Whatever the reason you tend to get easily upset now - especially in your domestic life. Women with this aspect are often attracted to emotional men who express their feelings passionately and intensely. However this may be because of unconscious provocation from the woman, who - never having experienced peace and calm in her early life - recreates the atmosphere of tension through criticism or angry moods.

Men with this aspect tend to have a short fuse, and often go about in an irritated state of mind. By identifying early childhood patterns of tension it may be possible to combat these negative emotional anger-states, which can be the source of a great deal of internal pain. Expression of anger rarely solves anything. It does not pay to let anger out, as you may fondly imagine. It pays to be conscious of the reasons for anger, before it arises.

As you mature and you gain insight into your emotional nature, you can learn to create an atmosphere of excitement around you. You will be inspiring to be with, and moreover, you learn to combat insecurity by giving freedom of movement and encouraging independence in those you are attached to.

Moon Semisquare Jupiter

This aspect is extremely powerful in your horoscope, and will be a major feature of your character.

The semisquare aspect shows a difficult streak in your character, which may manifest as an unconscious stubbornness in the matters concerned.

PROFESSIONAL - EMOTIONS: Horizons

You would thrive in a profession which offered you the opportunity to travel and explore different cultures. You could easily work or

settle in a foreign country. Being restless in spirit, you get rather bored in a job which does not have an element of exploration - culturally, intellectually or geographically. You are essentially a very curious person, and the pursuit of knowledge is food for your soul. You can also be very caring, and your generous disposition can give you a talent for working with the public, especially as regards public opinion, marketing, or broadcasting values of some sort or another. Children would be especially benefited by your attention, and you have both the humour and educational drive to be a good teacher. You are not the kind of person to stay in any one job for a great length of time, unless it offers opportunities for growth and expansion.

PERSONAL - EMOTIONS: Horizons

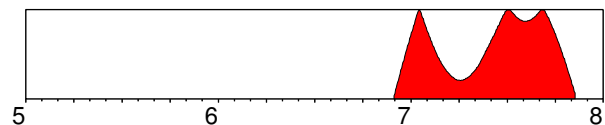
Foreign environments may have played an important role in your upbringing, and generally speaking you will enjoy the cultural stimulation of travel and new horizons. You have very strong empathy, and your emotional life exerts a powerful influence on your environment. You feel things very strongly, especially as regards what is right and what is wrong. You react powerfully to perceived injustice, and instinctively flare up or get upset when you think something is unfair. Above all, you dislike restrictions on your personal freedom, and you can manifest a strong independence if you feel encroached upon. You may often overreact to quite normal expectations on the part of the partner, as regards commitment and responsibility. Generally however, your optimistic and light-hearted nature brings a lot of joy and happiness to personal relationships, just as long as you are allowed to feel free, travel and pursue your intellectual interests.

EMOTIONS - EMOTIONS: Horizons

Your mother had a strong influence on your personal convictions about life for better or worse. Perhaps she was religious or moralising, with extremely dominating opinions about what was best for you and the world. On the other hand she may have had an extremely beneficial effect on you - widening your horizons, stimulating you intellectually, and providing you with a strong moral foundation. Your mother was probably not the type to let herself be restricted by relationships, and she will have inspired in you the desire to expand your horizons and see the world. Because of these childhood influences, freedom to pursue your dreams and visions is important for you. You have strong convictions about your personal rights, but these may not be realistic when you decide to commit yourself to a relationship. You often get into emotional arguments on matters of principle when you feel you are being treated unjustly, but perhaps you need to overcome a certain emotional irresponsibility. It is essential for you to re-examine and adjust your moral convictions.

Jupiter Transiting Square Moon

12/1/2006 -> 11/9/2007



Major irritation factors arise as a result of this influence, yet if you use this period to initiate dynamic change you will be able to make dramatic progress in your life.

PROFESSIONAL - EMOTIONS: Expanding your base

This influence depends very much on how large a role safety and security play in your professional life. If safety is paramount, you will be wanting to expand the foundations of whatever represents security for you now. As this may well be property, you could wish to move into a larger home or business, and indeed it certainly

pays to invest in land and buildings now. Providing that you can trust your instincts in these matters, then property acquisition or expansion is favoured.

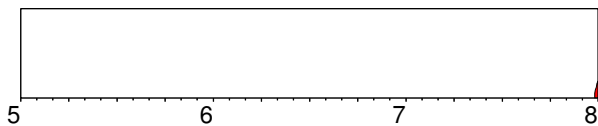
For some people freedom and expansion of horizons will be more important than security. The urge to investigate foreign countries - their people and culture - can play an important role in your career now. Trust in your hunches - your intuitive powers are at their highest in this period, and you have the enthusiasm to take on any challenge. You may however find that your interests lie outside the professional sphere. This is a higher-charged period for you emotionally, so you will probably also want to expend your energies on domestic or family matters.

PERSONAL - EMOTIONS: Expanding your base

This is a period when your feelings and emotions exert a tremendous power in your life. Hopes and dreams about the future will be a driving force inspiring you to take action. Generally speaking you should have a degree of luck and good fortune in attaining your greatest dreams at this time. This is probably a natural consequence of the enthusiasm you invest in all matters. You can expect an expansion of your horizons and a deepening of your capacity to show feeling. You learn something of the mystery of life, and it gives a new meaning to your existence. You can be strongly inspired by a future vision connected with domestic happiness, a home or children. There is, however, a tendency to go overboard. If you are hoping for the fulfilment of emotional dreams, so many opportunities can arise that you simply cannot make a choice. Furthermore your emotional suggestibility is at its highest - you believe what you want to believe. Whatever the concrete results - if any - of this period, you will come into deep contact with your emotional power and gain rewarding new insights.

Jupiter Transiting Trine Moon

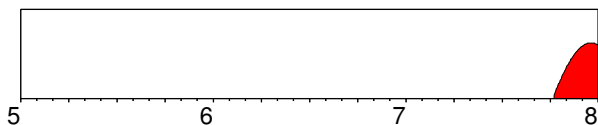
12/26/2007 -> 12/31/2007



Please read page 10: "Jupiter Transiting Square Moon"

Saturn Transiting Conjunction Moon

10/11/2007 -> 12/31/2007



You can expect powerful change in this area, as you learn to integrate the following influence into your life.

PROFESSIONAL - VALUES: Emotional self-sufficiency
Issues of economic and job security become very pressing at this time, and you will feel a strong drive to overcome any weaknesses in this area. You can however expect a lot of difficulties, especially if you indulge immature expectations, or rely too much on others. Childish behaviour gets you nowhere now, and if you do not have conscious control over your emotional reactions you can expect to be unpopular. The atmosphere in your working environment may be rather heavy now - perhaps because of an elder woman who is trying to assert her authority. The more mature you are, the better you can handle trying situations. You have to know when to set limits, whilst still living up to your responsibilities. You can develop the

self-discipline and patience to work with people in difficulty, if you choose to.

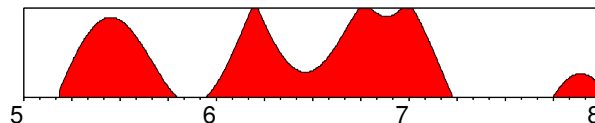
PERSONAL - EMOTIONS: Emotional self-sufficiency

During this challenging emotional period you will become more mature and self-sufficient. But this is not normally a happy time - partly because safety and security is no longer what it was. You have to spend time building more secure foundations for your life, and you cannot expect anyone else to be very supportive during this time. It is up to you to shoulder responsibilities uncomplainingly and with dignity.

Time can drag on now because you have to spend more time attending to everyday details and getting things to function on a practical level. On an inner level you are confronted with the need to change or control unconscious emotions and habits. It is no use allowing your temperament, your jealousy, your distance or your stubbornness to get in the way of a rewarding relationship. The time demands emotional self-improvement, so stop making excuses and start working on yourself.

Uranus Transiting Opposition Moon

3/10/2005 -> 12/31/2007



This extremely strong influence can bring change, dilemmas or separation. The likelihood of travel in connection with these issues is strong.

PROFESSIONAL - EMOTIONS: Change of environment

This is an exciting and perhaps disturbing period because of radical and unexpected changes in your environment. You cannot expect to feel very secure now - the period requires flexibility as regards working habits and place of work. There may be more travel than usual, and there is a chance of greater international commitment, perhaps involving contact with people from exotic cultures. A growing awareness of social issues may inspire you to work with people who are displaced in society in some way, either as social outsiders or refugees.

As this is a time of considerable emotional awakening and awareness, you can acquire a greater knowledge and consciousness of unconscious processes. If you can integrate this awareness into your work, you may find yourself applying newly-discovered talents for dealing with people - particularly as far as consciousness-raising activities are concerned. There is a strong likelihood of career involvement with groups and with collective ventures now.

PERSONAL - EMOTIONS: Change of environment

This is a time of emotional restlessness and unpredictable change, which will strongly affect the environment you live in. Events can arise which shake you up emotionally and force you to gain greater insight into the unconscious mind and habitual emotional reactions. Greater awareness and objectivity is required when dealing with your feelings now. In reality there is a growing need for change, and this is going to affect family life. There is a strong urge to live a gipsy-like existence - and indeed you may find yourself moving around or in temporary accommodation for a while.

If you are thinking of moving, this is the time when it will happen. It is fine to be somewhat impulsive now, just as long as you get free of environments which no longer mean much to you. It is however not an especially good time for settling down. It is better to be on the move, to travel and to discover new places, countries

and people, without allowing yourself to be tied down for too long. You may strike up an important attachment to an untraditional group now, and you will be attracted to people who live on the fringe of society.

Mentality

Mercury In Virgo Retrograde

Please read page 3: "Mercury In Virgo Retrograde"

Mercury In 12th House

Please read page 3: "Mercury In 12th House"

Mercury Conjunction Moon

Please read page 8: "Moon Conjunction Mercury"

Mercury Sextile Neptune

You will often feel the influence of this aspect, though stronger influences may predominate in other areas of your chart. When reading the following description, please bear in mind that you are a fast learner and overcome any difficulties involved very quickly. You can expect to use this aspect constructively and harmoniously.

PROFESSIONAL - MENTALITY: Clarify your thoughts
You have a very refined mental sensitivity which may be expressed through some form of imaginative and creative work. You possess a wonderful intuition, but formal learning and dry facts do not interest you. You can be quite a perfectionist and are very good at spotting mistakes and errors. In your dealings with others, you are very good at tuning in to their ideas, and you will go very far - perhaps too far - to avoid confrontation and argument. You tend to hope difficulties will disappear if you ignore them, and you have a tendency to create a smokescreen around issues. Thus you like to get your own way through being indirect and confusing the opposition. However if you do not make an effort to stick to ethical principles and honest representations, you may find yourself getting ensnared by the stories you create. You have a talent for creative communication - as a writer, in advertising or the media, or as a general part of your work.

PERSONAL - MENTALITY: Clarify your thoughts
In intimate relationships you are very attuned to what your partner is thinking. You are a mind-reader, and as such you often feel you know what another person will say before it is said. Whilst this is often the case, problems can arise because of a tendency to adjust what you say to conform to the other person's supposed expectations, and to hide thoughts and ideas which you think will not be received well. If this habit goes on for too long, you may find that you start living in another world - isolated and misunderstood. Effort must be made to improve communication and to say what is really on your mind. You are oversensitive to environmental stimuli - particularly noise - and partners may feel you overreact or are over-critical in this area. However you do need to be in a peaceful environment to function well.

THE MIND - MENTALITY: Clarify your thoughts
It is quite likely that you experienced many troubles in the early part of your life connect with truth and lies. Your home environment was probably deeply affected by the tendency to fudge issues and avoid discussion. You have a fantastic imagination, and whilst this is truly a fine talent, you do tend to embroider the truth and this may not have been appreciated by your family. What is more, you learned as a child that it did not

pay to speak directly - for one reason or another - and you may have preferred the inner world of your imagination to the outer world of reality. You are an excellent liar when pushed into a corner - and this is partly because you simply wish to avoid unpleasantness.

It is essential for you to rise above the dangers of dishonesty by embracing strict standards. Should you fail to do this, you will be sucked into a spiral of fabrications which directly threaten your sense of reality. By striving for mental purity you can use your extraordinary talents. These can range from poetic imagination to clairvoyant abilities.

Mercury Conjunction Pluto

This aspect is extremely powerful in your horoscope; every action you take will be coloured by this energy.

This connection between two planets shows a fusion of two principles for good or ill. You integrate quite different energies and express them as one process. This manifests as a strong personal character trait.

PROFESSIONAL - MENTALITY: From secrecy to openness
You have an investigative mind and considerable talent for finding out about hidden issues and analysing things in depth. You are also good at keeping secrets. As such you are a natural detective and are able to find the root cause of problems. This is a useful talent in psychological matters, when working with computers or anything requiring fanatical attention to detail. There is an ability to tap hidden sources of information. In your professional life, however, you are inclined to be suspicious, fearing that important information is being kept from you. People can feel that you interrogate them, and they tend to clam up. Sometimes you express yourself far too forcefully and do not allow people to come with their views. Success comes when you overcome communication problems connected with anxiety.

PERSONAL - MENTALITY: From secrecy to openness
You are a rather secretive person; you think hard and deeply, and sometimes you are plagued by compulsive ideas and fears. Much of this is a result of childhood anxiety connected with lies, secrets or lack of communication. Because you do not always let on what you are thinking, you can easily be misunderstood. Put people's minds at rest by clearing up these misunderstandings and strive to be as open as circumstances permit. When your feelings are hurt you can be silent for long periods. And when you are insecure, you tend to be suspicious of your partner. Harmony in relationships comes when you resist the tendency to argue for hours at a time, or to use silence as a weapon, and instead learn to be open and trusting.

THE MIND - MENTALITY: From secrecy to openness
As a child you were deeply affected by secretive behaviour on the part of parents or siblings. You had a strong intuition that important facts were kept secret from you - you may indeed have been lied to in connected with some profound truth. Later in life you may well have discovered the details of what has been kept from you - this can for example have something to do with secret connections your parents had - for example half-brothers or sisters you never knew about. There is a strong possibility that a family member was extremely non-communicative or silent in a rather disturbing manner. Perhaps you too felt that it was difficult to make your voice heard.

Whatever the actual circumstances, the result of this is a gnawing doubt concerning the truth of what you hear, so that you are often driven to deeply question the motives or actions of others. Sometimes your tendency to cross-examine will drive a partner behind a protective wall of silence for long periods of time;

sometimes you too will clam up as a way of applying pressure in a relationship.

As you overcome these difficulties you learn to relax more in communication matters. By giving people the time and space to respond to your questions without anxiety, and by allowing people to have their secrets if they so wish, you can attain peace of mind. Ultimately your life will be enriched by the discovery of quite unique mental abilities on a deep psychological level.

Mercury Square MC

This aspect is of medium strength and its influence will often be felt, though not acutely.

There will be great difficulty in integrating these two planetary influences, and the promised harmonious results will only arise after you have expended time and effort.

PROFESSIONAL - GOALS: The ideas person

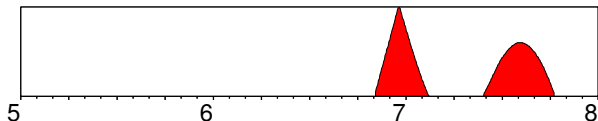
It is important for you to integrate your mental faculties in your career. Teaching, dealing with communication, writing, meeting people and generally creating contacts are all part of the employment spectrum for you. An inner restlessness will ensure that you either seek a career with a variety of interesting functions, or change jobs at regular intervals. The important thing for you is to get your ideas across in society.

PERSONAL - GOALS: The ideas person

You like to have your finger in a number of pies, and although this can be manifested as versatility, you have a tendency to be easily distracted from your personal goals. Changes of views and a restless nature may mean that you move often. A stimulating atmosphere - both at home and in your work - is a prerequisite for personal satisfaction. Children, chatting and play can keep you happy all day.

Jupiter Transiting Square Mercury

11/5/2006 -> 10/9/2007



This is a time of tension and dramatic change which may be most apparent in your domestic life, or in your career. Use the time to make much-needed changes.

PROFESSIONAL - MENTALITY: Expanding contact

The effect of this influence depends very much on how you employ your mental talents in your profession. This is the time you should invest in your mental abilities. Knowledge is power, so it could pay for you to go on courses, meet people and expand your sphere of influence. You can expect an increase in the time you spend travelling now, so try to streamline this area of your life. You should be doing more to enlarge your network of contacts, so make sure you are available through telephone, fax or computer. You will talk more, travel more and write more. If you have any dreams as regards writing or getting some message across to the public, now is the time to go for it, as there is a strong disposition for success in these matters. This is generally a great time for wheeling and dealing, doing business and capitalising on contacts at home and abroad. Nevertheless you can talk too much and be too intellectually pushy. Take time to listen to the opinions and advice of others - you can make misjudgements if you don't.

PERSONAL - MENTALITY: Expanding contact

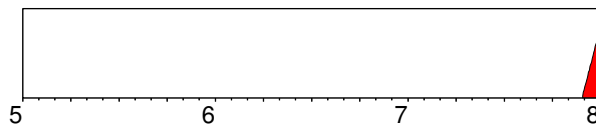
This is a period of expanding intellectual curiosity which can be

reflected in many areas of your life. You will probably devour books and TV programmes at this time to satisfy your urge to acquire knowledge. It will also be an important process for you now to weave all the threads of information that you gather into a whole piece of cloth, so that you can see a meaningful pattern in all the details that surround you.

This is a time to be on the move and to allow your mind to be fertilised by contact with a wide variety of people with different views on life. You should be bubbling with ideas, so you have to get them down on paper or out to a broader public. Although this is generally an optimistic period, there is a risk of losing your sense of proportion, particularly if you are inclined to worry or fantasy. Knowing the power of the mind to create the future, you would be well-advised to guide your thoughts into constructive channels.

Jupiter Transiting Trine Mercury

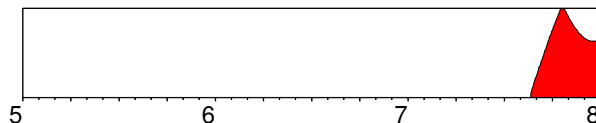
11/30/2007 -> 12/31/2007



Please read page 12: "Jupiter Transiting Square Mercury"

Saturn Transiting Conjunction Mercury

8/23/2007 -> 12/31/2007



Major changes will occur in the area of your life described here and you will integrate new personal behaviour and attitudes in your life.

PROFESSIONAL - MENTALITY: Mental self-discipline

You are challenged now to get organised and to administrate your time sensibly. There is a particularly emphasis on improving and consolidating your talents. Long-term plans for training courses or intellectual improvement can be put into effect. Writing or communication blockages must be overcome. You can develop the necessary mental discipline now to attain your goals. Expect communication problems, and expect plans or travel arrangements to be delayed. There needs to be far more attention to detail. Attend to the small print when signing contracts.

Learning to economise with your words and messages is an essential lesson for this period. How can you express yourself most effectively in the shortest possible time? If you develop the self-discipline to organise your daily life so that you can attend to mental challenges, you can expect very satisfactory long-term results. There is a strong emphasis on business matters at this time - but many minor irritations. Take one problem at a time, be patient, and solve challenges with long-term strategies.

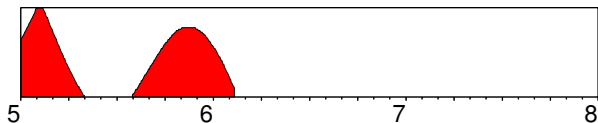
PERSONAL - MENTALITY: Mental self-discipline

This is a period in which you have more than the average amount of worries. There are many practical issues to be solved, and there is no other alternative than to get down to each issue and concentrate on one thing at a time. It is important to organise your time more efficiently. Problems particularly arise in the area of communication. This is the time to address these issues and find practical solutions.

If you feel unsure of your intellectual abilities or that you lack the

necessary training to do what you want, then you should make a commitment to improve now. You need to spend more time talking and listening to your partner - there are issues which need to be solved. Problems can also arise in connection with sibling relationships or neighbours, and if you are patient and diligent you can find long-term solutions. Discipline your daily life and realise creative dreams.

Uranus Transiting Opposition Mercury 1/1/2005 -> 2/10/2006



Very strong tensions will occur in your life in the following area. Other people will impinge on your life and force you to adjust.

PROFESSIONAL - MENTALITY: New communication boundaries. This is a period of great mental inspiration and excitement. To attain professional success now it is essential to think in new channels, and not allow yourself to be limited by conventional ideas or "the voice of experience". It is the new and untraditional that brings success, so experiment, invent and surprise people. If you are involved in a long and boring period of education or training, then you are in trouble. Mental restlessness at this time will incline you to abandon traditional teaching and seek new ideas which will stimulate your imagination. You will learn best in experiential groups or by yourself.

This is an excellent time for improving New Age interests - particularly astrology. It is a time to travel and meet different kinds of people, and a good period to learn or use another language. You should modernise communication systems now, improve computer capacity and generally hook into networks which unite people. As far as contacts and agreements are concerned, this period is rather unpredictable. Being tied down or committed to time schedules does not suit your needs at this time.

PERSONAL - MENTALITY: New communication boundaries. During this inspiring period, you should grasp opportunities to drop activities which bore you, and start learning new things which keep you up to date with modern trends. Many inventive ideas pop up into your mind now, and you have to find people to share them with. You will be impatient with people with entrenched ideas and opinions, and you may feel the urge to provoke others into thinking in new ways. This impatience can bring tension and misunderstanding in relationships, in which case you should associate with people with whom you can communicate and share your visions. Time moves fast in this period, and you too may be on the move, travelling and meeting people. Avail yourself of new transport opportunities, buy yourself a car, or hop on a plane. Develop language talents, and immerse yourself in new technological developments, particularly as regards communication. Enrol on consciousness-raising courses, or get involved in grass-roots movements. There are very few times in your life when you will be so mentally open to radically new ideas,

Values

Venus In Leo

PROFESSIONAL - VALUES: Project personal warmth. You are attracted to a life of luxury and style, and in your dealings with others you set great store in being able to give a good

impression. Personal prestige is an important career value - and you need to see your prestige reflected in the way you look and the things you own. Professionally you can avail yourself of your considerable personal charm and influence to get ahead. You know how important first impressions are, and you are careful to cultivate your contacts by showing respect and warmth. At the same time you expect to be noticed and appreciated in your job. Because you are basically a generous person you will probably attain a certain popularity, and this will be a major asset for you. Position is more important to you than money, but with your need to live in style and your extravagant tastes, money is also very necessary.

PERSONAL - VALUES: Project personal warmth. Men with this position are attracted to women who they can show off a little. Both men and women are drawn to people who have a central position in social circles. Good taste, good manners and style are essential ingredients in love. Women expect to be courted with style, and expensive gifts are the order of the day. Actually both sexes are very warm-hearted and romantic. Whilst there is an intrinsic loyalty and sense of honour there is also, paradoxically, a weakness for affairs. It is difficult to resist adoring glances! Blows to personal pride can seriously affect the stability of a relationship, and - mutual admiration being so important - there may be little to salvage if one party loses respect for the other.

Venus In 11th House

PROFESSIONAL - VALUES: Social warmth. You are an extremely sociable person with a great, though rather impersonal interest in other people, especially if they come from an unusual environment or have original interests. Your social talent gives you certain professional advantages, as you become an appreciated member of the social group to which you belong. You can find great pleasure in the social arrangements that go along with your work - indeed this may be where you do your best work. Generally speaking you are inspired by strong humanitarian values, and you would be happy to work in a position where you can give people social support in some way, or perhaps work in a consciousness-enhancing field. You have a talent for working in groups - especially when there is a majority of women.

PERSONAL - VALUES: Social warmth. You have a kindly and tolerant attitude to most people, and this results in you building up a large circle of friends and acquaintances. Warm friendly relations have a high priority for you, and you have a natural charm which ensures that friendships are mutually rewarding. In more intimate relationships, your social life will still be very important for you. You are not comfortable channelling all your love and affection on just one person, so it is necessary for you to maintain your social connections if you want to feel fully satisfied. You have a talent for spreading your love on a wider basis, and though this means that you can be rather romantically cool in a one-to-one relationship, you can be valued by others on a collective level. You need the feedback and appreciation of your friends to feel good about yourself. You are blessed with affectionate and supportive comrades.

Venus Square Jupiter

This aspect is of medium strength and its influence will often be felt, though not acutely. There will be great difficulty in integrating these two planetary influences, and the promised harmonious results will only arise after you have expended time and effort.

PROFESSIONAL - VALUES: Fortune

You have excellent aesthetic judgement, and strong personal values and convictions. You are suited to any profession which can make use of your ability to evaluate and compare - especially if this is connected to cultural or artistic projects. You also have a great ability to impress others with your charm and insight. You would be wasted in a job which did not allow you the opportunity to meet and influence people. You can deal with cultural issues or artistic objects, you can travel in your career, you have diplomatic talent, you have a great sense of style. Success often comes easily for you, and you may thrive in the company of women, and have their professional support. Normally you are lucky, and a great deal of money can flow through your hands. How fast it flows is another question altogether. Your warm personality and optimistic view of the future are your greatest assets.

PERSONAL - VALUES: Fortune

You are an extremely loving and romantic person, and this brings both benefits and problems. Often you fall in love with love, and have difficulty settling into stable relationships because of your hunger for romance and emotional stimulation. You are however a great lover, and your attention makes your loved one blossom. There is a tendency to be attracted to a person who comes from a different culture or country - perhaps this is because of a need to widen your emotional horizons. There is a tendency to marry upwards in society. The most important value for you in a relationship is intellectual or cultural stimulation. You need to be able to respect your partner for his or her intelligence. A woman with this aspect has a great need for attention and appreciation, and particularly values the mental stimulation the partner can give. A man with this aspect has a great appetite for the opposite sex, and whilst intelligence is important, there is often a taste for exotic or good-looking women. Faithfulness may not be a strong point, though sooner or later there will be a tendency to tighten up moral values regarding love.

LOVE - VALUES: Fortune

The issue of love or romance plays a dominant role in your life. Early intimacy with a sister, or a strong awareness of your parent's love relationship may be the foundation on which you build romantic expectations. Perhaps your mother was the romantic type, widely travelled or with pronounced cultural or artistic interests. If so, she may have expressed exaggerated views connected with love and relationships, inspiring in you a longing to indulge a cornucopia of romantic desires. Whatever these early influences were, you may find later relationship experiences not quite living up to your inflated expectations. It is important to be realistic, as romance and glamour last only a short time. Intellectual growth and mutual stimulation through shared interests or travel can however bring lasting pleasures. You can bring tremendous warmth and passion to a relationship, and you are probably a very giving person - but it would be wise to remember that your partner probably does not have this same capacity to express love. Spiritual or religious values may play an important role later in your life.

Venus Square Neptune

This aspect is extremely powerful in your horoscope; it will dominate many areas of your life. In your chart there is disharmony between these two planetary influences, and this will be reflected by many struggles both within your mind, and out in the world.

PROFESSIONAL - VALUES: Acceptance

You have an extraordinarily refined aesthetic sense. Disharmony evokes an almost physical unease in you, so you are strongly motivated to recreate balance in your inner and outer world.

Professionally this can manifest in a career where matters of taste are important, or diplomatic talents necessary. You are especially suited to public relations matters, but your genuine compassion for other people may incline you to work helping others in some way. Although you may be strongly inspired by items of physical beauty, you will rarely be satisfied by material well-being alone. You have musical and artistic talents.

PERSONAL - VALUES: Acceptance

You are willing to make sacrifices for love, and as an incurable romantic you are skilled at creating circumstances for personal disappointment, either through poor judgement regarding potential partners, or unrealistic expectations. You are looking for more than a worldly love - you need to feel as if your soul is touched by your partner, you need to feel a spiritual bond. To be happy in this area of your life you must understand and accept so called imperfections in others. The perfect partner does not exist and you will never find him or her. It is important to choose an equal - not someone you idealise or want to save - and it is important that the chosen one shares ideals and dreams which transcend conventional relationship needs. Unhappiness and dissatisfaction in love is actually the result of unconscious impressions from your distant past, and these feelings actually have a spiritual purpose now.

LOVE - VALUES: Acceptance

You have the capacity to develop a deep spirituality and compassion of an almost religious nature. Worldly relationships will never fulfil all your needs, though spiritual or creative practice might. You tend to start love relationships with tremendous dreams and ideals, yet after a few months you will often feel let down by the partner. Actually the partner - not wishing to disappoint you - tries to live up to your ideals in the first stage of the relationship, but reverts in time to his or her true nature. Men with this influence will often give the female partner the impression that she is imperfect in some way and this can lead to her losing self-confidence and ultimately become very unhappy. Both sexes tend to imagine that the ideal relationship is just around the corner, or idealise an old relationship which never became actualised....all the better to dream about. If you examine your past carefully you will find that this pattern of unrealistic expectations arises from childhood experiences. One of the parents - most probably the mother (and possibly a sister) - will have expressed a deep dissatisfaction and longing for another kind of relationship than the one she had. This may well have been expressed non-verbally. The unconscious message to you was that the ideal relationship exists but is unattainable. Thus you are on the alert for flaws in your chosen partner - and miraculously they arise. This is a complex projection based on an unconscious disappointment programme. As awareness dawns about this, you learn to resolutely avoid false expectations, and see both your own weaknesses and those of others in a compassionate light.

Venus Sextile MC

Though not especially strong, you will be able to feel the influence of this aspect under many circumstances. When reading the following text, please bear in mind that you will for the most part experience only the positive effects of this aspect. You are particularly stimulated to learn and communicate, as regards the matters concerned.

PROFESSIONAL - GOALS: Manifest beauty

You have a talent for expressing your 'sthetic judgement and sense of beauty in your career. Your charming personality enables you to deal equally well with both people as material

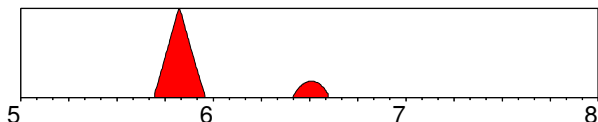
assets, and you achieve success through the goodwill of others. You hope that success will come to you the easy way, and if you are lucky it will. However you tend to wallow in sensory pleasures, and may be inclined to flaunt your material advantages through conspicuous consumption.

PERSONAL - GOALS: Manifest beauty

You are motivated to maintain a comfortable life-style, and generally have a fine artistic judgement - both as regards how to maintain the home, and how to pursue your career with style. At worst you are inclined to a sumptuousness and conspicuous consumption which borders on bad taste, at best you know how to create a harmonious and peaceful environment.

Jupiter Transiting Square Venus

9/12/2005 -> 8/7/2006



Major irritation factors arise as a result of this influence, yet if you use this period to initiate dynamic change you will be able to make dramatic progress in your life.

PROFESSIONAL - VALUES: Blessings

If you are the lucky type, you could not have a better period than this one. This is a time when influential people - particularly women - can guide you towards success, and when your economic resources have every chance of expansion. Success comes in particular in the cultural, intellectual or artistic field, though there is also a reasonable chance of business expansion also. Matters of fairness and justice will cause concern at this time.

It is more important to enjoy life than just work hard at this time - if you can't appreciate life's pleasures now, when can you? What are your true values and goals in your career? This is the time to include them in your plans for the future. However, if you indulge your pleasures too much, this can be an expensive time. You are very vulnerable morally now, and affairs of the heart can lead you into a costly blind alley. Don't cut corners to gain easy profit, a questionable gain now can lead to long-term loss. You are easily seduced.

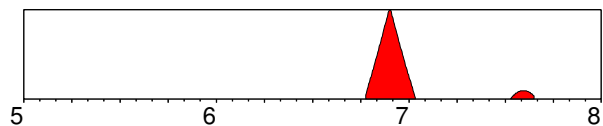
PERSONAL - VALUES: Blessings

This is a romantic period par excellence, so you can expect affairs of the heart to have priority now. If you are in a relationship, your need to give and receive love will be very strong, so ensure that you indulge your emotional and erotic desires. This is a time when the power of romantic and sexual attraction is extremely strong, whilst the moral discipline is weak, so it is important to weigh the needs of the heart with other emotional costs. Sometimes it is more important to nourish and indulge the need for love than anything else, sometimes not. Let your ideals about fairness guide you.

It is a great time to travel, and if you are seeking a partner, there is one to be found in foreign climes, or in cultural or intellectual institutions. You are not inclined to fall for anyone for physical reasons alone at this time - you need a partner who can stimulate you intellectually, and expand your understanding of life and its pleasures. If you are interested in creativity, this can be a wonderful period because you gain insight and understanding of the aesthetic forces of Nature, seeing the beauty inherent in all things, and experiencing that beauty as a manifestation of truth in some way.

Jupiter Transiting Trine Venus

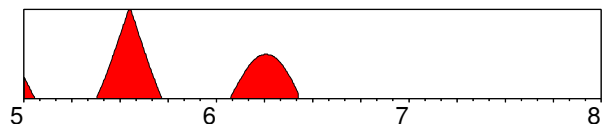
10/12/2006 -> 8/26/2007



Please read page 15: "Jupiter Transiting Square Venus"

Saturn Transiting Conjunction Venus

1/1/2005 -> 6/5/2006



You can expect powerful change in this area, as you learn to integrate the following influence into your life.

PROFESSIONAL - VALUES: Building self-worth

Economical issues come to the fore now, and you will probably find yourself having to work long and hard, perhaps without getting the financial rewards you would like. It pays to economise and save now, or to make very secure investments. By careful economical planning you can create the foundations for future growth, although short-term success is unlikely. Working on professional relationships may be necessary now, and you could be asked to make a long-term commitment.

It would be to your advantage to pay more attention to subtle influences on your career, such as your appearance and personal style. If you want to open doors which have been closed for you until now, learn for example the finer points of diplomacy and overcome clumsiness or shyness in dealing with people. An understanding and appreciation of taste and style can be the keys to much desired status improvements.

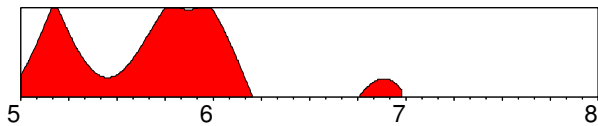
PERSONAL - VALUES: Building self-worth

You can expect many challenges in your personal relationships now. How great is your commitment? Can your affections stand the test of time? No trivial relationship can survive this period, simply because you feel that you do not have the time to waste on romantic attentions that are not genuine. Those people who are in long-term relationships will go through a testing phase - the old clichés and protestations of love will not suffice any more. A recommitment may be necessary and more time should be spent together.

Love and romance do not come easily now - and indeed it is better to be alone developing inner self-worth and reliance, rather than seeking confirmation from love affairs. Assurance of love from others will definitely not be forthcoming now, so it is not worth wasting time on lukewarm relationships - you would be better off by yourself. It is a time for giving, but not for receiving. Contentment comes from an appreciation of quality, not quantity, and from what you have got, rather than what you have not got. This also applies to material things - it is better to do without, rather than long for things which in the last analysis will not truly satisfy you.

Uranus Transiting Conjunction Descendant

1/1/2005 -> 12/24/2006



Major changes will occur in the area of your life described here and you will integrate new personal behaviour and attitudes in your life.

PROFESSIONAL - PARTNERSHIP: New relationship needs

This is a period of fairly radical change in your professional relationships. There is a strong likelihood of travel and of exciting encounters with people from foreign lands, so brush up language abilities and diplomatic talents. Established partnerships may not function so well now, as you may be tired and bored with old business relationships. Indeed sudden and unpredictable breaks are very likely. If you meet new associates at this time, it is not very favourable for making commitments, as there is far too much unpredictability in the air.

You can thrive by getting away from dealing with dry facts and figures, and going to meet interesting people during the course of the day. This is an excellent time for New Age interests and contact with experimental groups, but if you are in a large company or concern you will be restless and badly in need of a change of scene. New faces and new interests can bring inspiration back into your life. Upsets in private relationships can distract you professionally during this period.

PERSONAL - PARTNERSHIP: New relationship needs

This is a time of excitement and change in intimate relationships, as well as in your social life. Change can be sudden and unexpected, but the challenge of the period is to renew yourself and your partnership. Get out of the rut, experiment, travel together, widen your horizons...but do something different! Tired relationships can get new life now, but if you are inflexible or intolerant, the end result can be separation and divorce. If your partner expresses a need for more freedom, or a need to get out amongst other people, or a need to pursue some crazy interest, you should welcome the opportunity you now get to spend some time doing whatever it is you want to do. You will not be able to prevent your partner from realising himself, or herself, so rise to the occasion and encourage mutual freedom in the relationship. The most important lesson of the time is that you cannot own another person. You too should get out from the four walls of the home, have the children looked after, and go out and make new friends. Exciting people can turn up in your life now, and turn you on to whole new ways of living. Relationships started at this time are very educational, and bring out completely new sides of your nature. There will be contacts with foreigners and much travel. A lot of time will be spent apart. This is not the time to cement relationships in a formal manner but a time to celebrate individuality and mutual freedom.

Drives

Mars In Taurus

PROFESSIONAL - DRIVES: Determination

Basically you like to work hard, and once you get started on a project you work long hours keeping it running. It may take someone else to initiate activity, but you are willing to maintain and consolidate the results. You can be quite comfortable with monotonous work requiring patience and determination. At the

same time you have a good eye for value. Knowing what you are worth you expect to be paid well. As you have strong desires, a good income is a necessity for you, and you don't mind working extra-hard for more material benefits. However you would be wise to show more care when buying luxury goods, as you can get carried away. You are a physical person and you can develop special talents connected with the body, massage, muscles, physical training etc. Learning to accept change and developing more flexibility would bring benefit.

PERSONAL - DRIVES: Determination

You have a strong will and will fight hard to keep what you have won. Once you have decided on something, you are very unlikely to change your mind. This stubborn streak can bring conflict. However you remain quite calm in confrontations, unless you are pushed to the limit. If you are, then you are dangerous and unstoppable. Although you can work hard, you enjoy relaxation and luxury, and are easily seduced by the good things in life. Sexual enjoyment is particularly important to you - even to the point of decadence. Men with this position of Mars will be rather dominating, though placid for the most part. Women will be attracted to the reliable type of man, who is able to provide security and a good economy. Both sexes incline to faithfulness but can come to grief through powerful desires.

Mars In 9th House

PROFESSIONAL - DRIVE: Intellectual pioneer

Your opinions and convictions are an important part of your professional life. You have a strong desire to increase your knowledge and understanding, but you function better when you are self-taught. Too many intellectual conflicts arise when other people try to foist their opinions on you. You are extremely powerful - perhaps too dominating - in putting forward your point of view. Nevertheless you can have success as a teacher or working in some field which necessitates persuasion or the spreading of information and ideas. You are very dynamic in your outreaching to others and may travel a considerable amount in connection with your work.

PERSONAL - DRIVE: Intellectual pioneer

You are a fearless searcher for truth and understanding, and this search may well bring you to foreign lands. You are an explorer type, constantly striving to increase your horizons and develop your interests. Women with this position of Mars are often attracted to men from a different culture or country, men may discover partnership abroad. You have strong opinions and these probably arose because you had to hold your own against an intellectually dominating brother, father or perhaps teacher in your early days. As a result you tend to be too aggressive when defending your own convictions. Your spiritual development may be profoundly affected by a mentor of some kind, though you have little inclination to subjugate yourself to the principles or convictions of anybody else. You may see your God as wrathful or severe, but you are inspired to rise to meet spiritual challenges in your journey to find truth.

Mars Trine Moon

Please read page 9: "Moon Trine Mars"

Mars Square Uranus

This aspect is of medium strength and its influence will often be felt, though not acutely.

There will be great difficulty in integrating these two planetary influences, and the promised harmonious results will only arise after you have expended time and effort.

PROFESSIONAL - DRIVE: Experimentation

You are an extremely dynamic person and you can perform tasks in a flurry of activity in half the time ordinary mortals take. You need excitement and originality in your work, and you do your best work when a deadline is threatening. When you decide to act, you strike like lightning. However you are best at working in short bursts of energy. Longer periods of activity tire and bore you. You have talent for working with technical matters - for example engineering, computers etc. You may also have a taste for more untraditional work, perhaps connected with New Age fields, consciousness-raising etc. The essential ingredient is freedom to experiment and learn from your own experiences. You are not very good at working in a team because you can react violently to being told what to do. You hate restrictions and orders and you need to go your own way. Other people may experience you as rebellious and you have a tendency to get into trouble with authorities. You are something of a pioneer, and may embark on dangerous travels to foreign lands.

PERSONAL - DRIVE: Experimentation

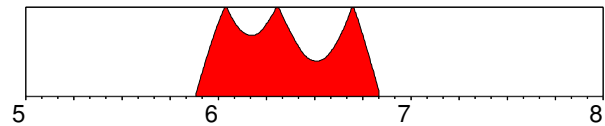
You are an extremely unpredictable person, and your fear of being limited by relationships makes you demonstratively aggressive when duty is required of you. Men with this aspect give their partner the impression that they can pack their bag and go at any time - in actual fact unpredictability is used as a threat to get their own way. Women with this aspect are attracted to unusual men, particularly from abroad or from some unique environment, - men who can promise excitement and freedom. There is a tendency to be enormously provocative and this can lead to explosive conflicts. This satisfies the ever-present craving for excitement in one way or another. To have peace in a relationship it is important to have some unusual interest or job which brings challenge and fulfilment. A relationship will not provide this in any lasting way. If all goes well you are an exciting person to be with, always willing to take a risk or try something new.

SEX & POWER - DRIVE: Experimentation

An untraditional father or brother will have evoked strong ideals of independence and freedom in you. You long for the open horizon and the unpredictable. This may relate to an atmosphere of tension in your home, where you felt - and feared - sudden changes or threats from males. The atmosphere was overcharged in some way. Actually you are born with an innate need to manifest your will in a dramatic way, and it will have been very difficult for your parents to control you. You will have experienced discipline as an unjust attack on your personal integrity, and this makes you even more provocative. With this attitude you will come into a spiral of conflict with authority. You don't want to learn from their experience, you want to learn from your own. If you can understand these rather hidden provocation patterns, you can learn to get on with others, even though you do go your own way. You do not have to be such an outsider. In sexual matters you also have a taste for excitement. Not for you every Saturday when the children are in bed - unless there is an element of unpredictability you can quickly lose interest. Although sex manuals talk of the need for a long period of foreplay, this can actually be tedious for you - with your strong sexual magnetism, why wait?. There may be an interests in advanced sexual techniques and instruments of pleasure. Periods without sex create a strong sexual tension, and there is a tendency for the male to have premature orgasm because of a high level of expectation. Sex for you needs to be a surprise, and it can take place anywhere. The people who established the 5 mile high club probably had Mars/Uranus aspects. In some cases there may be early experiences of danger or the tabu connected with sex, which means you have to recreate a situation of tension

to experience release through orgasm. In extreme cases women who have this aspect may be very provocative prior to love-making.

Jupiter Transiting Opposition Mars 11/20/2005 -> 11/2/2006



Very strong tensions will occur in your life in the following area. Other people will impinge on your life and force you to adjust.

PROFESSIONAL - DRIVES: Burning enthusiasm

It is important for you to harness the energy and enthusiasm which surges through your body at this time. The competitive edge is sharpened, and you have the courage and vision to enter the rough and tumble of the marketplace and meet whatever challenge that confronts you. You can overcome obstacles now and expand your sphere of action. This is not a time when you can be too interested in diplomatic niceties - you want to get things done, and in a hurry. There is a burning desire to achieve. This is an excellent time for pioneering activities and expansion abroad. It is also a good time for throwing yourself into hard physical work. There is an inclination to get into confrontations now, and it is not helped by your desire to impose your beliefs and convictions on others. You may try to bully your way through. Although it is favourable to act on your convictions regarding what is right and what is wrong, it pays to gain insight first and cultivate greater tolerance.

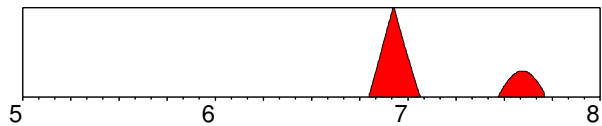
PERSONAL - DRIVES: Burning enthusiasm

This is the time to be intoxicated by a new decisiveness and a willingness to invest your energy into getting what you want. There is a refinement of the sense of purpose and the meaning of taking action. This lust for life can manifest as an expanding of your horizons through travel, taking on new intellectual challenges, getting into your body through exercise and training - and sexual exploits. There is a sharp increase in erotic drives at this time, and men will become increasingly aware of a need to prove themselves and their masculinity. This can manifest as the desire to woo and win the affections and body of a suitable quarry.

Women too become increasingly aware of sexual needs and the power of attraction to the opposite sex. There is a willingness to take the initiative in these matters. However it is actually the need to be stimulated intellectually that is paramount for women as far as attractions are concerned at this time. A relationship is also seen as a means to expand personal horizons and learn more about men and life in general. Indeed this period has most significance as regards insight into the body - and this includes greater consciousness concerning health, and the muscular system, as well as personal sexuality.

Jupiter Transiting Conjunction IC

10/21/2006 -> 9/17/2007



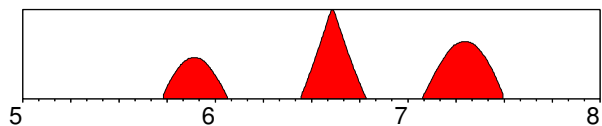
You can expect powerful change in this area, as you learn to integrate the following influence into your life.

PROFESSIONAL - FOUNDATIONS: Expanding your base
You will probably find family interests and expansion in the domestic sphere taking priority over your professional ambitions at this time. Nevertheless you can experience a degree of luck in your career and perhaps the opportunity to travel or expand your sphere of influence. Surplus emotional energy enables you to be very supportive of those you work with now.

PERSONAL - FOUNDATIONS: Expanding your base
This is a time of emotional insight connected with your home, your family and your heritage. You will learn a lot about what holds a family together and what traditions are important. Psychological insight into your deepest emotional needs may lead to a reevaluation of the meaning of home to you. You will want to focus on increasing the space available to you and those close to you now.

Saturn Transiting Square Mars

9/25/2005 -> 7/1/2007



This is a time of tension and dramatic change which may be most apparent in your domestic life, or in your career. Use the time to make much-needed changes.

PROFESSIONAL - DRIVES: Developing willpower
This is a time to mobilise reserves of willpower and pursue goals with indefatigable determination. You can expect a lot of resistance now, especially from older men in positions of authority. Effort, long-term strategy and hard work is the remedy for problems that arise at this time. Courageous action leads to the building of lasting edifices now.

First of all it is necessary to overcome lack of self-confidence. You may feel that there are men of greater experience available to do the jobs you want, but by training and perseverance, you can - in time - achieve the goals you set yourself. If you don't succeed, try and try again. You will become stronger and more efficient. Great satisfaction can be achieved through the power of organisation and self-discipline - if you rise to the challenge, you will achieve success. This is an excellent time for hard physical work - particularly as regards building and construction.

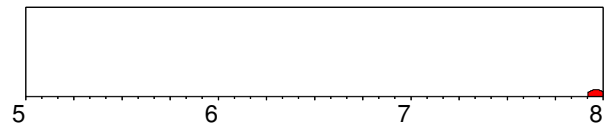
PERSONAL - DRIVES: Developing willpower
This period can be rather a trying time, and there are many obstacles to be overcome. However with hard work and determination, you should be able to have things the way you want them - finally. Men will feel unsure of themselves at this time, and there will especially be a question mark as regards their sexual needs and performance. There may be a reluctance to take the initiative in these matters for fear of being rebuffed, yet it is at precisely this time that a man can get into contact with his body, learn more about his needs and develop the confidence

and assertiveness to handle sexual relationships. Circumstances may however dictate less sex during this period.

Women who experience this influence will also be concerned about their body, especially as concerned blockages preventing spontaneous enjoyment of erotic pleasures. It pays to take more time in a relationship to improve sexual contact. More patience is needed in the warming-up phase, and less focus on erogenous zones. Many sexual fears about dominance and authority can be dealt with, and the long-term effect on sexuality can be beneficial. Sometimes an older or more experienced man comes into the life now. Both sexes benefit from more exercise or training through body-building, aerobics and the like.

Saturn Transiting Trine Mars

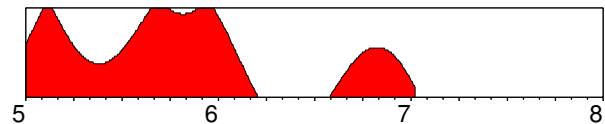
12/4/2007 -> 12/31/2007



Please read page 18: "Saturn Transiting Square Mars"

Neptune Transiting Square Mars

1/1/2005 -> 1/9/2007



Major irritation factors arise as a result of this influence, yet if you use this period to initiate dynamic change you will be able to make dramatic progress in your life.

PROFESSIONAL - DRIVES: Path through confusion
You will probably experience a lot of confusion as regards your goals right now. It can be extremely difficult for you to define exactly what it is you want to do, and even if you know, it can be difficult to know how to do it. This confusion will be felt as an inner dissatisfaction - at least you know what you don't want to do! Using this feeling to guide you, strive to attain your ideals and work only on those things which really interest and inspire you. This is an excellent period for idealistic work, both as far as social, creative and spiritual issues are concerned. In your dealings with others you need to take great care. There is an air of decadence or dissolution about the people you meet at this time - particularly men. Alcohol and drugs can play a particularly negative role, and it is best to avoid stimulants as far as possible. You are very vulnerable to being cheated or led astray now - your moral fibre is being tested. There is a tendency to go behind people's backs, or to feel that others go behind your back. Keep on the straight and narrow path if you wish to avoid swampy ground.

PERSONAL - DRIVES: Path through confusion
This is a time when the will to achieve, and the ability to take an initiative seems to be undermined. You don't like what you have, but don't know what you want. By refining your motives and actions, and tuning in to spiritual or creative needs, you can acquire new talents. Women at this time are disposed towards very curious experiences with men. There can be attractions to inspiring, musical or artistic men who later turn out to be frauds or disappointing in some way. Rather shady affairs can arise, as the woman seeks to recapture some of the magic she expects from love and sexuality. This is a projection process by which the woman seeks in the man creative and magical qualities she

should be developing in herself. Men of weak character - particularly those who are easily seduced by their desires - tend to make a mess of relationships at these times through infidelity. Sexual satisfaction is found to be illusory however. It is beneficial to develop a better contact with the body now, perhaps channelling the invisible energies in the environment through Tai Chi, yoga, dance, swimming or similar activities. A new-found awareness of the body can give greater sexual satisfaction at this time. The power of the imagination and of film, music, wine etc. as sexual stimulants may be discovered. Take time off work to develop your creativity.

Wisdom

Jupiter In Libra

PROFESSIONAL - WISDOM: Trust your judgement
Your concepts of fairness and principles of justice and equality endow you with the ability to arbitrate between people. You see both sides of an issue, and you know what is in balance, and what is not. As a result people come to you for advice, and have profound respect for your conclusions. The potential for success exists in all matters where you apply your aesthetic judgement - whether it be on an artistic level, or in connection with human relationships. You can succeed particularly well in partnership with other people, and generally you are the one who can smooth the waters when trouble arises. An instinctive sense of harmony is an invaluable aid for you, when planning your future. You can visualise future issues and weigh them in your imagination, and this capacity leads to many wise decisions.

PERSONAL - WISDOM: Trust your judgement
You were born at a time of increased international diplomacy. Nationally the spotlight was on cultural and aesthetic issues. And on a general level it was a time of positive new trends in human relationships. You are inclined to build up a wide network of social connections and benefit from the goodwill of influential friends. With this influence in your horoscope, you have the capacity to be superior judge of issues, cultivating values of impartiality and fairness. Your personal fascination with the ideal relationship can mean, however, that as far as romance is concerned your judgement is not always so wise! Love affairs can lead you astray. Generally though, your talents incline you towards very rewarding relationships because you are always willing to view matters from the point of view of your partner and compromise when necessary. However you will not compromise when you feel that an injustice is being done - on matters of right and wrong you have strong convictions.

Jupiter In 2nd House

PROFESSIONAL - WISDOM: The Universe will provide
You are generally fortunate in economic matters, and one of your greatest resources is your ability to expect the best of the future. Your capacity to have faith in the principle of abundance will be directly reflected in your material success. You are willing to spend money to make money, and many people can benefit from your generosity. You may have a talent for advising others on economic issues, especially as you have considerable financial foresight. You may earn money in connection with abroad. Financial security is a natural expectation for you. It is unlikely that there will be any anxiety as regards economic matters, but should there be, you are a fast learner and gain insight into major issues when in financial trouble.

PERSONAL - WISDOM: The Universe will provide
Unless other compelling factors prevent this, you will enjoy a very

good standard of living. Paradoxically material luxuries will not be of primary importance for you, they just follow in the wake of your generous disposition. You place greater value on self-development and understanding than on material gain, and it is the resultant expertise which brings you rewards. You have remarkably strong moral values and convictions which will manifest in philosophical or political opinions which you stick to through thick and thin. You have a strong sense of ethics, and other factors in your horoscope will indicate whether this is expressed in a tolerant or moralising way.

Jupiter Sextile Sun

Please read page 5: "Sun Sextile Jupiter"

Jupiter Semisquare Moon

Please read page 9: "Moon Semisquare Jupiter"

Jupiter Square Venus

Please read page 14: "Venus Square Jupiter"

Jupiter Conjunction Neptune

This aspect is of medium strength and its influence will often be felt, though not acutely.
Two energies are unified into one in this planetary aspect, and you will express this energy in a very personal way, for good or ill depending on other factors in your chart.

PROFESSIONAL - WISDOM: Expansive dreams
As these planets are relatively slow-moving their influence is felt most on a collective level. Insofar as you channel their influence in your profession you will wish to work on the collective effect of knowledge, the intellect and social influence. There may be a talent for marketing or advertising or selling a dream or vision. There can also be a drive to evangelise on a social, religious or political level. You can be strongly motivated by altruistic ideals and identify with some kind of vision or dream that transcends your own dreams. On a more down to earth level there can be a talents for dealing with oil and related products - particularly plastics. There may also be an interest in oceans, the film industry and anything which enchants on a collective level. You can be hopelessly overoptimistic - heed realistic advice!

PERSONAL - WISDOM: Expansive dreams
This influence shows that you can be moved by dreams and visions. There will be some aspect of your life in which you are touched by something magic that completely transcends your everyday life. This can bring great happiness, if you choose to cultivate your intellectual drive towards greater spiritual understanding through creative, artistic or meditative interests. At the same time there may be a total lack of grounding, or a tendency to be completely absorbed by unrealistic ideas. There are dreamers of dreams who achieve nothing, and weavers of dreams, who can bring visions down to earth. Ultimately people will be disappointed in you, if you are the former. You have the capacity to make faith and hope guiding lights for your actions.

COLLECTIVE - WISDOM: Expansive dreams
As Jupiter takes 12 years to go around the Sun and Neptune 165 years, the two planets meet in a conjunction cycle every 13 years. It is a time of spiritual progress. At this time humanity is gripped by great hopes concerned with an ideal future of some sort. People work to achieve Utopia - and though as a rule disillusion comes, there will be a period when people are joined in unselfish love for a shared ideal. This is a time when the bubble expands, when optimism exceeds all bounds, when the balloon rises to the

greatest heights. Before everything comes down to earth again the human soul is enriched and touched by the divine. Intangible things become tangible in a magical way - there can be a special emphasis on music, art and the media.

Jupiter Conjunction N. Node, Jupiter Opposition S. Node

This aspect is extremely powerful in your horoscope; it will dominate many areas of your life.

This conjunction shows a fusion of energies in you. Both the positive and negative sides of this aspect will be an integral part of your character.

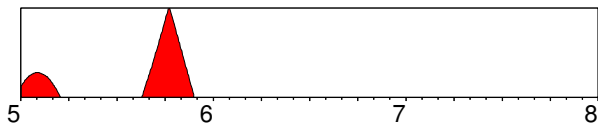
PROFESSIONAL - DESTINY: Wisdom in emptiness

Your counsel may be sought on a wide range of issues, and you may be able to attain an influential position in large groups or organisations, because of your judgement and visions of the future. You may get involved in social projects on a grand scale, though there is a danger of being seduced by magnificent mirages because of a faulty ideology. You will grow to understand the hollowness of prestige and adulation, and will perhaps later seek refuge in a place of retreat.

PERSONAL - DESTINY: Wisdom in emptiness

You may seem a larger than life character in the circles which you frequent. You gravitate towards people who have influence and power, whether financially, socially or intellectually. Meeting people who you respect for their views and opinions is an important formative process during your life. You tend to go overboard when propagating your own philosophical ideas, but later in life you may develop a more meditative attitude to the nature of truth, perhaps through some religious experience.

Jupiter Transiting Conjunction Jupiter 1/1/2005 -> 11/24/2005



Major changes will occur in the area of your life described here and you will integrate new personal behaviour and attitudes in your life.

PROFESSIONAL - WISDOM: Development of insight

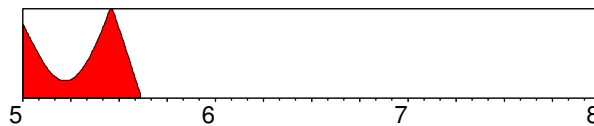
As Jupiter represents areas of your life in which hopes and visions for the future are paramount, as well as the need to gain understanding and meaning, you can expect an increase of awareness and activities in these areas now. If you are motivated by the need for expansion and growth, then you can expect advances. There is increased focus on your ability to act on moral values and pursue your convictions concerning society. This is the time to refine your judgement and manifest your capacity to guide and counsel others. If you have a tendency to overestimate yourself, indulge moral weaknesses or to make premature judgements, then you will be confronted with this side of your character now. If self-discipline and a natural carefulness is a part of your nature however, you can take advantage of opportunities to expand.

PERSONAL - WISDOM: Development of insight

Jupiter takes 12 years to go around the Sun, so it will return to its own position at the ages of 12, 24, 36 etc., and activate itself by major aspect every 2 years. During these phases of your life you can increase your insight and understanding, and plug in to that

most essential part of your life which gives you a sense of purpose and meaning. It is at these times that you can rediscover your joy in existence and faith in the future. This in turn will enable you to be fertile and grow. However if you are the type who is over-confident or immodest, then you will learn a lesson at this time. Your hopes and visions for the future should be within the bounds of possibility, and if you do not keep in touch with the ground under your feet, you lose out in the long run.

Saturn Transiting Square Jupiter 1/1/2005 -> 8/11/2005



Major irritation factors arise as a result of this influence, yet if you use this period to initiate dynamic change you will be able to make dramatic progress in your life.

PROFESSIONAL - WISDOM: Opportunity knocks

This can be a good time in your professional life, if you are prepared to harness your vision of the future to build something lasting. Doors can open for you now, if you have done the necessary groundwork. You can at least reap the benefit of all the efforts you have made to improve your training and experience. People in authority are liable give you recognition, and this can lead to a change of status or well-earned promotion.

If you overestimate your abilities, and hope for success without making effort, then there will be few benefits from this period. You should be prepared to work harder, to wield more influence, and perhaps to travel in connection with your working responsibilities. This is a good time for dealing with authorities and formalising long-term future commitments.

PERSONAL - WISDOM: Opportunity knocks

You can expect some consolidation in your life which will give you greater security now. If you are the lucky type, you will benefit from real estate dealings or home purchase. Your status will be formally confirmed in one way or another. You can move up a few steps in life, if you are prepared to make the necessary efforts and have a positive expectation of the future.

You are challenged to overcome negative thinking now, and to work on your personal capacity to believe in yourself and have faith in the future. It can help for you to redefine your spiritual values and make a concrete effort to build up a more solid spiritual base. This is the time to make your opinions clear and to take a firm standpoint.

Jupiter Transiting Through 2nd House 1/1/2005 -> 10/21/2005

PROFESSIONAL - WISDOM: Abundance

This is a good time to realise the financial benefits you deserve, perhaps by going for a raise or converting material resources. A positive belief in your own worth will almost certainly bring favourable results in this area. Invest in your talents and expect the best results. Extra income comes, but you may also want to go on a spending spree. Remember the principles of abundance - there is plenty in the world for everybody. Make sure that you are on good terms with financial authorities.

PERSONAL - WISDOM: Abundance

Growing convictions about self-worth give you the necessary confidence in your personal relationships. You may be feeling extravagant and will wish to spend money on luxuries. You may

also embrace new values of a more philosophical or religious nature, and these can become an important component of intimate relationships.

Jupiter Transiting Through 3rd House 10/22/2005 -> 12/5/2006

PROFESSIONAL - WISDOM: Explore every avenue
A considerable expansion in your social life takes place at this time, and you will find yourself travelling more, meeting people and taking advantage of your communication talents. Learning skills are boosted, you may work with new languages and you will benefit considerably from the mental stimulation of being with others. It's a good time to expand transport possibilities.

PERSONAL - WISDOM: Explore every avenue
Increased activity in your social life makes this an extrovert phase. The accent is on travel and learning together with a partner or friends. Intellectual development has major priority and you are extremely open to philosophical ideas. Not only do you want to learn more - you also have the capacity to expand your wisdom and insight.

Jupiter Transiting Through 4th House 12/6/2006 -> 12/31/2007

PROFESSIONAL - WISDOM: Expanding your roots
You have the capacity at this time to expand your sense of security and feeling of belonging. Success and satisfaction connected with the home and family create the foundation for greater emotional resources in connection with your career. Good fortune can arise connected with land and property, and you may experience increased support from your family.

PERSONAL - WISDOM: Expanding your roots
Other things being equal you have the opportunity to really enjoy family life at this time. Good fortune and surplus energy can be utilised to create even better conditions in your home life. It's a good time for happiness through children, and there are good home-expansion possibilities. The family may also expand. On an inner level you can gain considerable insight into hidden emotional and conditioning factors, and this can enrich intimate relationships.

Challenges

Saturn In Sagittarius Retrograde

Because this planet was retrograde at your birth, you will have an instinctive knowledge of, and attraction to, the following traits and activities. You will tend to be introvert in these matters, and pursue your own individual path in strong contrast to the path chosen by others.

PROFESSIONAL - SELF-RELIANCE: Wisdom through experience
Saturn went through this sign in the years 1926-29, 1956-58 and 1985-88. These transits heralded periods of hectic international activity, with emphasis on expansion of intellectual as well as geographic boundaries. If you integrate this influence in your professional life, there will be advancement in areas concerned with higher education, ethics and the law, or perhaps on travel and international organisations. You may feel that you have to overcome an inner insecurity concerning your intellectual ability or capacity for making wise judgements, and by doing this you will slowly but surely increase the breadth of your knowledge and understanding. If you achieve success in these matters, you will

acquire considerable authority in some sort of council or panel, which concerns itself with giving advice. You have to guard against being too severe or moralising.

PERSONAL - SELF-RELIANCE: Wisdom through experience
There was a strong emphasis on world events at the time of your birth and you may have been subjected to strong opinions regarding politics, social issues or religion which will have had a formative effect on your personal convictions today. You will have been more or less affected by a tendency by your parents or society to moralise or exert ideological influence. This may be reflect negatively in your own character by your having restrictive and conventional views about everything, or positively by your overcoming this influence and developing your own convictions based on personal experience. It is particularly important that you build up a strong set of philosophical values which can help you explain the meaning of your existence. There is a tendency to be rather negative about the future, and therefore it will pay for you to learn something about the value of faith and the power of positive thinking.

Saturn In 4th House

PROFESSIONAL - SELF-RELIANCE: Environmental challenges
You have a deeply ingrained need to live up to professional responsibilities. Perhaps this comes from parental expectations. Make sure that your ambitions are your own rather than your parents'! You may wish to serve your community or country in some way. You have also a talent for administrating property or working in the building industry. Your need for job security inclines you to take a job which protects you over a number of years, guaranteeing long-term employment and a pension. However on retirement you may miss the daily discipline of hard work. You are profoundly aware of your commitment to your family, and domestic pressures can be a distracting element in your work.

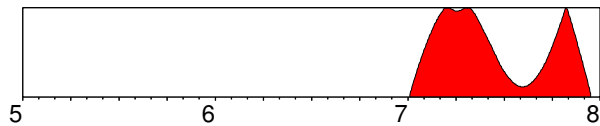
PERSONAL - SELF-RELIANCE: Environmental challenges
Your early upbringing was something of a trial. The atmosphere was probably rather heavy, without any sense of enjoyment. Perhaps this was a result of genuine hardship, perhaps your father was something of a disciplinarian, perhaps you felt the relationship between your parents was cold and strained. But the result is that you are defensive emotionally, and have difficulty devoting yourself to potential partners, though you are certainly dutiful and prepared to live up to your family responsibilities. Emotional inhibitions arise from the bonds you had to impose on yourself in childhood, when you felt very vulnerable. Now those who want to get close to you find an impenetrable barrier. Later developments in the family will encourage you to loosen up and learn to trust those who want to give you their love, so that you rediscover a rewarding emotional life.

Saturn Trine Sun

Please read page 5: "Sun Trine Saturn"

Jupiter Transiting Conjunction Saturn

1/6/2007 -> 12/14/2007



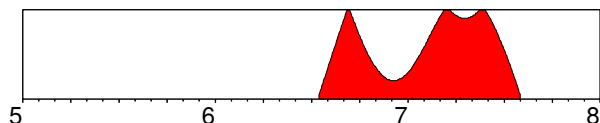
You can expect powerful change in this area, as you learn to integrate the following influence into your life.

PROFESSIONAL - SELF-RELIANCE: Expanding the framework
It is at this time of your professional life that the urge for growth and expansion confronts the forces of inertia in your career, or in society. You get to appreciate the power the establishment has over your life at this time. You are challenged to examine how you limit yourself and your future through restrictive systems or a lack of vision and faith in your abilities. If you can find the balance between learning from past experience yet allowing a future vision to inspire you, you may expect solid and steady growth at this time. It is important to expand within a certain framework and to accept the limitations imposed by professional authorities. If you do this you will be an important cog in the development of your company, or culturally in society.

PERSONAL - SELF-RELIANCE: Expanding the framework
At this time of your life you have the opportunity to loosen some of the bonds that restrict you, and lighten the load which weighs you down. This is the time that you have to adjust the awareness of what is necessary by becoming aware of the art of the possible. Restricting life patterns can be replaced or adjusted by exploring new avenues for the future. Inasmuch as you are hampered by a sense of insufficiency or inferiority as regards your abilities, you can gain renewed confidence and faith in yourself now by defining future goals and working hard to achieve them. You can build a lasting niche for yourself in society at this time by laying new foundations for the future.

Saturn Transiting Trine Saturn

7/17/2006 -> 8/2/2007



This is a very beneficial influence, though you may not be consciously aware of the process. Creativity and travel are favoured as you expand your capacities and sphere of influence.

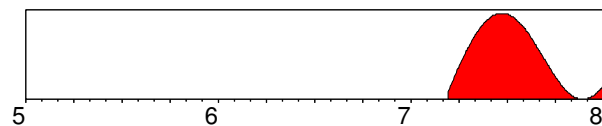
PROFESSIONAL - SELF-RELIANCE: Adjusting direction
As Saturn takes 29-30 years to orbit the Sun, it makes a major aspect to itself about every 5 years, and these are times when adjustments of direction and goals have to be made. At the age of 29 to 30 however, a major reorientation is necessary. You have to look carefully at what structures you have built up in your life and why. If you don't make changes now, when can you? Are your ambitions your own, or are you simply fulfilling the expectations of your parents or of authority figures in society?
It is essential to spend some time sensing what it is exactly you want for yourself in life. Cast aside all the unnecessary baggage which you have accumulated in your efforts to carve yourself a professional niche in society. Don't worry about personal status and ambition for the time being, and don't listen to people who tell you what they think is good for you. The older you get the more important it becomes not to waste time pursuing superficial career goals which will be of no benefit in the long run.

PERSONAL - SELF-RELIANCE: Adjusting direction
All phases of the 30 year Saturn cycle are important, although the ages 30, 44, and 52 are perhaps the most significant. These are times when you have a chance to review the passage of time and assess the unfolding of your life. Are you satisfied with the direction it is taking? If not, change it now. Change need not be radical, you just have to define what it is you truly want to spend time on. Remember your responsibility is first to yourself. The biggest gift you can give to others, is to show that you are satisfied with your own life.

It is important to weigh the balance between career and family commitments now. Do not be influenced by what other people expect of you - only you can know what it is that you really need in life. The yardstick for decisions at this time is: Imagine you were on your death bed...what then, would you wish you had achieved in your life? The wrong decision now can mean years wasted on unfulfilling work.

Uranus Transiting Square Saturn

3/13/2007 -> 12/31/2007



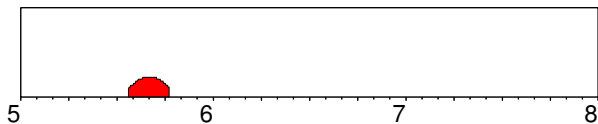
Major irritation factors arise as a result of this influence, yet if you use this period to initiate dynamic change you will be able to make dramatic progress in your life.

PROFESSIONAL - SELF-RELIANCE: Renewal of plans
This may well be a period of increased social activity and intellectual curiosity. You should ask yourself questions now concerning the viability of long-term plans and well-established traditions in your career. Should things continue as they have been, or would it be wise to experiment and integrate new techniques? Unpredictable events can arise which force you to make changes. It would be to your advantage to consider the humanitarian aspects of your work, and do something which has positive social consequences. International contacts and modern technology can also benefit you. On a deeper level you may want to take a closer look at professional commitments and change your values, so that you can have more freedom and independence. Freedom, experimentation and flexibility are key words now, as you cannot thrive under the command of others, or with a rigid work schedule.

PERSONAL - SELF-RELIANCE: Renewal of plans
If your life is dominated by rigid patterns and tight schedules, you will be wanting to liberate yourself from their tyranny now. Many of the structures that you have built up in your life serve only to constrict you and prevent further development and growth. Now is the time to open doors and take a few risks with your life. Cut back on commitments, put your Time Manager away and brush away the cobwebs of your mind. It is no use being restricted by the same old arguments about responsibility to others - parents and partner must accept that there is also a personal responsibility to develop greater consciousness. Unpredictable things can happen now, structures break down, carefully laid plans are abandoned - you need a dash of excitement.

Pluto Transiting Conjunction Saturn

7/25/2005 -> 10/9/2005



Major changes will occur in the area of your life described here and you will integrate new personal behaviour and attitudes in your life.

PROFESSIONAL - SELF-RELIANCE: Replace antiquated structures

Old structures break down and disintegrate now, and after a rather chaotic period are replaced by new. This can be a violent process with power-battles, as the old guard struggles to maintain their position. However the replacement of the old with the new is inevitable. Old faces in the working environment move on or are forced out; systems which have existed for an age are ruthlessly replaced. There can be conflict in connection with trade unions. Ask yourself in what way have you have allowed rigid structure and habit to strangle your progress and vision. Who and what is limiting you? Sometimes the whole house must be pulled down, before you can start on something new. At the very least radical reorganisation of work structures is necessary. Do not hang onto security out of fear or attachment to personal prestige, but go for change in the knowledge that new structures will be better.

PERSONAL - SELF-RELIANCE: Replace antiquated structures
This influence is personal for some people - especially those with a Capricorn or Aquarius Ascendant - but affects others on a more collective level. You may be forced to eliminate the habits and structures which have served to protect you for many years. Authorities - both in your home and work environment - have to be unseated so that you can take greater responsibility for your own life. You have to confront anxiety about security and accept the fact that growth can only come when you emerge from the cocoon of fear which shields you from living life. Power struggles deep within your psyche make you aware of the transience of the structures in human existence, the rapid passage of time, and the inevitable approach of the grim reaper - death. These processes may be paralleled by actual restructuring and rebuilding at home.

Saturn Transiting Through 11th House

1/1/2005 -> 10/13/2005

PROFESSIONAL - SELF-RELIANCE: Social commitment
During this period you will be challenged to overcome your resistance to meeting people socially. Professional success brings social commitments, so now you have to learn to expand your influence in this area and also to take more responsibility for social issues. You should put time aside for unselfish activity working with a group to achieve some long-term project. As such professional ambitions may have to take second place. If you are prepared to loosen up in informal gatherings, you will find that you can make lasting friendships with influential people.

PERSONAL - SELF-RELIANCE: Social commitment
You will be spending more time with your friends now, and you will find yourself become concerned about their problems. This is a good time to take responsibility for those whom you feel some kind of loyalty to. This is also a period during which you will find out who your true friends are, and this may lead you to cut down on the time you spend on unnecessary social engagements. You may wish to take some kind of responsibility in your local community or get involved with a group which embraces social

ideals.

Saturn Transiting Through 12th House

10/14/2005 -> 1/1/2006

PROFESSIONAL - SELF-RELIANCE: Letting go
You will find many of your hard-fought efforts coming to nothing at this time. Your strategies for success, which worked so well in the past - have now outlived their usefulness. You may not know it yet, but the time is approaching when you will be setting new goals for yourself, and a new professional cycle will begin. In the meantime it is not helpful to battle away trying to achieve old goals or apply the same old strategies to professional challenges. It may be wiser to allow things to run down, and search for the new goals which even now are taking form within. Listen to your as yet unspoken dreams for the future.

PERSONAL - SELF-RELIANCE: Letting go
This is a period when you turn within as you experience much of the outer structure of your life dissolve. It is a difficult phase for you emotionally because there are very few firm structures to hold on to. By spending time on your inner dreams, by developing your creativity, or through meditative practice, you can find enrichment on an inner level. Allow things to dissolve and search for new inspiration for the future.

Saturn Transiting Through 11th House

1/2/2006 -> 6/28/2006

Please read page 23: "Saturn Transiting Through 11th House"

Saturn Transiting Through 12th House

6/29/2006 -> 11/11/2007

Please read page 23: "Saturn Transiting Through 12th House"

Saturn Transiting Through 1st House

11/12/2007 -> 12/31/2007

PROFESSIONAL - SELF-RELIANCE: Establish new life path
After a long period of confusion and seclusion as previous life structures underwent a dissolution process, you will now be able to glimpse the kind of life you would like to build for yourself. Over the last few years, many of the ambitions you have had will have lost their meaning. The goals which you achieved in the past are no longer relevant for your future, and you will probably have discovered that no matter how hard you have strived to create lasting achievements in the recent past, your efforts will have been washed away. However now is the time to plan a new future. Invest in your self. The visions that form now will be realities in a few years. By writing down your plans and making a blueprint for your future, you will ensure later success.

PERSONAL - SELF-RELIANCE: Establish new life path
As you slowly discern your personal path into the future, after the last few years of inner focus and outer lack of direction, it is best now to spend some time defining a new life-path. Responsibilities for others must make way for responsibility to yourself. By looking after your practical interests, paying attention to your body and establishing a program for your future, you can establish a life structure which ultimately means you have something concrete to offer others. People might find you serious and withdrawn, but you have important decisions to make. You know that the direction you choose now will form the basic structure of your future, and that is something to be taken seriously.

Originality

Uranus In Leo

COLLECTIVE - ORIGINALITY: Collective identity

Uranus takes 84 years to orbit the Sun and is in this sign for 7 years, representing a collective influence on a whole generation. It shows how you are most influenced by revolutionary attitudes in society. When the Ascendant is in Aquarius this influence will be expressed in a more personal way.

Uranus went through this sign in the years 1956 to 1962, and will do so again from 2040 to 2046. These eras usher in radical changes in society through the influence of particular individuals, who somehow touch a collective chord in society. These changes are most apparent in the field of entertainment with the collective identification of hero and heroine figures. Style and fashion make a big impact on the collective psyche of the time.

Inasmuch as you reflect this collective influence in a personal way, there will be an unusual aspect of your identity or personal style which makes an impact on your environment. You will accentuate the importance of being an individual and doing your own thing, and this will involve considerable personal freedom. You believe in your right to have enjoyment in your life, and will react violently to any restriction on your freedom to be yourself.

Uranus In 12th House

PROFESSIONAL - ORIGINALITY: Beyond spiritual borders

You may want to integrate some unique talents as regards social idealism into your career. You can be particularly inspired by the plight of people who live on the periphery of society in some way. Your social concerns are felt very much on a collective level, and you tend to see solutions in terms of far-reaching political change. You can identify with the outsiders in society and may wish to perform social service on a particularly altruistic level - perhaps as part of an international humanitarian organisation. You are often disillusioned by the official bodies which have been established to help people in need, and are attracted to loose interest groups in which the individual effort makes a difference.

PERSONAL - ORIGINALITY: Beyond spiritual borders

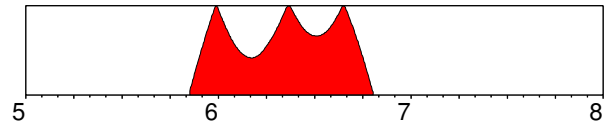
You are susceptible to rather dramatic changes of consciousness on a spiritual level during the course of your life. Trauma and shock on an inner level shakes up your psychic defences and awakens deep-seated curiosity about the inner realms of the imagination. A sudden experience or consciousness of other unseen worlds can open up new psychic interests. You would benefit from contact with a group of like-minded people who have a similar attitude to spiritual issues. You know that there is more between heaven and earth than meets the eye, and you can become a channel for spiritual information or work with human consciousness in one way or another. You may develop an interest in the human aura, electrical phenomena, clairvoyance and similar themes.

Uranus Square Mars

Please read page 17: "Mars Square Uranus"

Jupiter Transiting Square Uranus

11/8/2005 -> 10/21/2006



This is a time of tension and dramatic change which may be most apparent in your domestic life, or in your career. Use the time to make much-needed changes.

PROFESSIONAL - ORIGINALITY: The future now

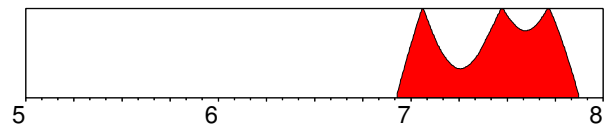
This is a time when insight and awareness of the future should be a force of inspiration and renewal in your professional life. Expect a dramatic increase in your horizons - either through long-distant travel and contact with exotic lands or peoples, or through mind-expanding activities connected with consciousness growth. Progress in your career depends on your ability to think in completely new channels and harness modern methods - both as far as technology is concerned, but also concerning revolutionary methods. This is a time of exciting possibilities and great inventiveness. The urge to be free and uncommitted may well have to be given priority over personal ambitions now.

PERSONAL - ORIGINALITY: The future now

During this period of excitement and unpredictability, you have a strong desire to expand the boundaries of your consciousness. Contact with foreign lands and cultures can blow your mind, and experiences on untraditional training courses or with experimental groups can give you a new sense of destiny or insight into transcendent aspects of your life. This is a good time for astrology and New Age interests, and to meet people who share special interests. So experiment, take a few risks and loosen your bonds you need to allow the unknown and unexpected to happen.

Jupiter Transiting Trine Uranus

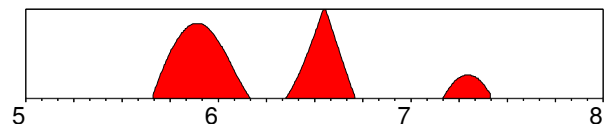
12/7/2006 -> 11/15/2007



Please read page 24: "Jupiter Transiting Square Uranus"

Saturn Transiting Conjunction Uranus

8/31/2005 -> 5/31/2007



Major changes will occur in the area of your life described here and you will integrate new personal behaviour and attitudes in your life.

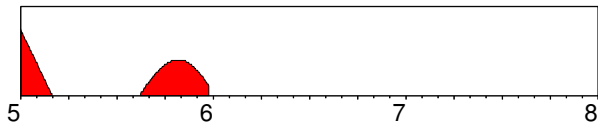
PROFESSIONAL - ORIGINALITY: Limiting individualism

This influence may not be so obvious in your life, unless you have strong Aquarius characteristics. It is a time when it pays to make constructive use of modern techniques in your career, or perhaps pursue interests connected with exotic cultures or people. Concrete work on untraditional or new age interests is also favoured. You will probably find that you will have to make some compromises with your tendency to be an outsider and to hold society at arm's length. It pays to build a bridge between old

traditions and modern trends. Social idealism and commitment is favoured.

PERSONAL - ORIGINALITY: Limiting individualism
During this phase of your life, you will find that you have to take more responsibility for those sides of your nature which are outrageous or provocative. Authority figures will demand more self-discipline and social awareness, and you will not be permitted to merely indulge your extremist views. However this is a good time to develop your interests in original and untraditional subjects, new age matters, and global awareness, especially if you have constructive plans in these fields. This may be a time when you will want to make a more formal commitment to an unusual group.

Neptune Transiting Opposition Uranus 1/1/2005 -> 12/23/2005



This extremely strong influence can bring change, dilemmas or separation. The likelihood of travel in connection with these issues is strong.

PROFESSIONAL - ORIGINALITY: New Age promise
This influence is rather subtle in its effect - its influence is felt most strongly for those with an Aquarius Ascendant. It is a time when sudden events can change the direction your life takes - perhaps because of the intervention of forces beyond your control. It can be effective for you to make subtle career adjustments, integrating mass marketing factors, or new technology in one way or another. You may be able to tune in to media forces, and harness future trends to promote whatever is important to you. This is typically a time when new age interests, and anything to do with consciousness growth can play an important role in your future - though there is a tendency to experience a degree of disillusion in these matters.

PERSONAL - ORIGINALITY: New Age promise
Inasmuch as you feel the subtle affects of this influence, you will find this period a time of considerable growth, especially on a spiritual level. It is a good time to harness revolutionary new methods in the pursuit of transcendent interests. Clairvoyance, astrology and all kinds of weird and wonderful things are favoured now. You may however feel that the promises of those groups you are involved with at this time turn out to be empty or illusory in the long run. You have a tendency to go overboard in your search for self-realisation, losing perspective of its practical consequences on your domestic and professional life.

Transcendence

Neptune In Scorpio

COLLECTIVE - TRANSCENDENCE: Transmutation
Neptune takes 165 years to orbit the Sun, and approximately 14 years to go through one sign. Its influence affects a whole generation, and is associated with a new sensory and spiritual awareness, and greater compassion, in connection with the sign it is in. For most people this influence is experienced on a collective level, but those who have their Ascendant in Pisces will express it in a personal way in their lives.
Neptune was in Scorpio from 1793 to 1806, and again from 1955

to 1970. There was a deep collective awakening of hidden emotional drives at this time, especially activated by musical developments and the influence of the media. The deepest fears of humanity seeped to the surface, and people were forced to develop new attitudes to death and destruction - a process which on the one hand enriched society on a spiritual level, and on the other created a certain mass hysteria.

If you channel this collective influence in a personal way, you will have a deep fascination with hidden and tabu matters, and with sexuality and the occult. At the same time there may be musical or magical talents which enable you to mobilise hidden powers to awaken others. Your search to satisfy your desires turns out to be a spiritual dead-end, and you learn quickly that the more you fan the flames of desire, the brighter burns the flame. Greater satisfaction is attained when you use your talents on a higher emotional or spiritual level.

Neptune In 3rd House

PROFESSIONAL - TRANSCENDENCE: Develop intuitive knowledge

You have a great imagination and many visionary ideas. Your intellectual interests probably centre around mystical, artistic or musical subjects. Professionally this could express itself in a communication form connected with pictures, emotions or fantasy...for example in the advertising industry or connected with art in some way. In communication matters you are often disappointed that colleagues seem unable to grasp your ideas. Express yourself in a language they can understand. Concentration is not your strong side, so in educational matters you need to be inspired, otherwise you go off into a dream. You can captivate others with your visions and ideals.

PERSONAL - TRANSCENDENCE: Develop intuitive knowledge
It is unlikely that you thrived in school unless you had a connection with a teacher who you could idealise. Dry facts and information seem meaningless to you, so you direct your interests towards subjects that capture your imagination - especially if they have a spiritual side. You tend to express yourself rather vaguely, perhaps because you don't like to be pinned down to any particular point of view, but the result is that you are often misunderstood, and this adds to your sense of isolation. When pressed you hide behind a smokescreen. In your relationships to brothers or sisters, there may be some peculiar unhappiness or loneliness which has a profound affect on your sense of what is meaningful in life.

Neptune Sextile Mercury

Please read page 11: "Mercury Sextile Neptune"

Neptune Square Venus

Please read page 14: "Venus Square Neptune"

Neptune Conjunction Jupiter

Please read page 19: "Jupiter Conjunction Neptune"

Neptune Sextile Pluto

This aspect is extremely powerful in your horoscope; it will dominate many areas of your life.
When reading the following description, please bear in mind that you are a fast learner and overcome any difficulties involved very quickly. You can expect to use this aspect constructively and harmoniously.

PROFESSIONAL - TRANSCENDENCE: Mass vision
These aspects are very rare and last a very long time. Indeed, as

Pluto moves within the orbit of Neptune in the closing years of the 20th century, the present sextile aspect between the two planets lasts from 1940 to 2040 - one hundred years - so almost everyone has it! If you are able to manifest this influence on a personal and professional level (through powerful contacts in your own horoscope), it may be connected with a deep spirituality and creativity. There can be talent for dealing with the media and wide ranging themes connected with the masses. Material issues will be less important for you than the realisation of a collective dream. There can be clairvoyant powers, and abilities connected with dreams, symbols and visualising. In industry there can be a talent for dealing with oil, the film industry or the transforming power of collective visions.

PERSONAL - TRANSCENDENCE: Mass vision

If you have this influence powerfully evoked by other factors in your horoscope, you will be deeply affected by spiritual issues, and constantly seeking to refine your consciousness. At these times you are likely to experience great personal disorientation and confusion, as old dreams and visions are replaced by new, deep psychological insights. Inner growth will have major priority in intimate relationships. During periods of your life you will undergo deep transformations in which your fantasy and imagination will play a powerful role. It is essential to learn to use your imagination in a positive way by learning about the power of the unconscious.

COLLECTIVE - TRANSCENDENCE: Mass vision

The Neptune/Pluto planetary cycle is connected with spiritual evolution on Earth and whole generations share this present harmonious aspect which - lasting as it does from 1940 - 2040 - is connected with a deep spiritual transformation process affecting the whole of human consciousness.

Neptune catches up with Pluto every 492 years, in what can be considered a spiritual seeding period for our planet. New collective ideas emerge at the start of this cycle, evoked by sudden developments of the technology and discoveries of the time. The major conjunctions since the birth of Christ were 411 AD, (disintegration of Roman empire), 904 AD, 1398, and 1891-2. This last conjunction in the sign of Gemini may therefore partly relate to the revolution of transport (flight and automobiles) and communication (radiowaves) which has such immeasurable effects on our consciousness today.

Neptune Quincunx MC

This aspect is extremely powerful in your horoscope; every action you take will be coloured by this energy.

The connection between these two planets means that you tend to overcompensate in the areas described by being too helpful. This means that you unconsciously encourage other people to take advantage of you.

PROFESSIONAL - GOALS: Empty ambition

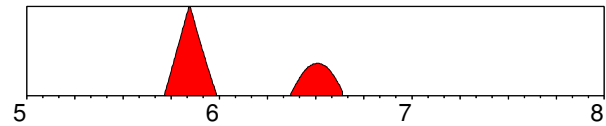
The traditional path to success is the road to disappointment for you. You need to feel inspired by goals which are not dissolved by the passage of time - goals which go beyond personal ambition. You may be motivated by creative, artistic, musical or film interests, or social ideals. Even when attaining these goals you long to be a part of something greater or to be associated with some universal sense of direction.

PERSONAL - GOALS: Empty ambition

Rocky foundations during the formative phases of your childhood can undermine your sense of direction in life. An inexplicable sense of confusion concerning your goals prevents you from building up a secure professional or domestic structure for

yourself or your family. You tend to indulge unrealistic fantasies about your potential instead of getting on with the business of living. You need to have the space and opportunity to retire from the stresses of career and family pressures - and creative or musical interests can provide you with refuge.

Jupiter Transiting Conjunction Neptune 9/20/2005 -> 8/23/2006



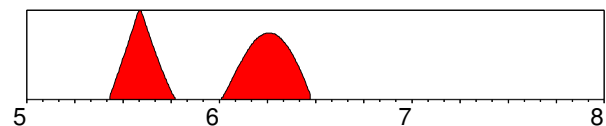
Major changes will occur in the area of your life described here and you will integrate new personal behaviour and attitudes in your life.

PROFESSIONAL - TRANSCENDENCE: Balloons and bubbles
You will experience a tremendous stimulation of your imagination at this time, and this can be used to advantage if you can harness your fantasy to some creative work, especially in connection with music, imagery and the arts. If being realistic is an integral part of your career, take care. Your idealism and dreams peak at this time, and this can seriously affect your judgement. Your imagination can be gripped by great hopes, and you have a tendency to attach your hopes to a bubble which expands and expands until it bursts. Inspiration is OK, but make sure that you do not get carried away into a world of dreams. Listen to the voice of reason, and work in stages with verifiable goals.

PERSONAL - TRANSCENDENCE: Balloons and bubbles

If you are a dreamer, this is the time when your dreams take wing and carry you into surreal landscapes. If you do not want your hopes to be dashed, you must be aware of your limits and let yourself be guided by common sense. Great hopes will often turn out to be illusory, so don't let your imagination get out of control. However this is an excellent time for developing your imagination and your visualisation power. If you choose you can enrich your life with great spiritual insight, and gain a subtle knowledge about the nature of reality and the illusion of identity.

Saturn Transiting Square Neptune 6/8/2005 -> 6/22/2006



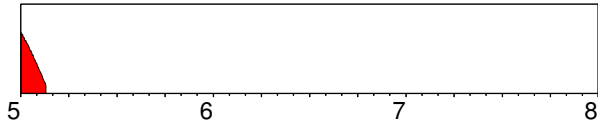
This is a time of tension and dramatic change which may be most apparent in your domestic life, or in your career. Use the time to make much-needed changes.

PROFESSIONAL - TRANSCENDENCE: Making dreams concrete
This influence may not be felt very strongly, unless you have a strong Pisces influence in your horoscope. It can be difficult to make concrete plans now, things tend to flow in an uncontrollable way, goals slip through your fingers. Instead of making strategies and long-term goals it would be an advantage to do something constructive with your creative talents. Your greatest asset at this time is your imagination, so try to think of practical applications for creative ideas. If you act in a determined manner you can realise many of your dreams and visions now. This is an excellent time for helping people who are losers in society.

PERSONAL - TRANSCENDENCE: Making dreams concrete

This is a time when you will probably feel rather alone and isolated. Money may be short, and security even shorter. You are forced to develop your inner resources now, because outer structures in your life tend to dissolve. This is a good period for developing spiritual discipline, or making long-term plans for creative development and growth. But otherwise there is a tendency to be down-and-out, or on the fringe of society. Nevertheless you may feel moved to take more responsibility for those who suffer now, or to make some sacrifice for others. Avoid negative frames of mind, or tendencies towards alcohol or pill misuse.

Uranus Transiting Trine Neptune 1/1/2005 -> 2/17/2005



This long-term and formative influence will enable you to realise your creative potential in the following area. Try to make the most of the opportunities which now come your way.

PROFESSIONAL - TRANSCENDENCE: Inner dimensions
This influence is rather subtle in its effect, although it can be felt strongly by those with a strong Pisces nature. It is very transcendental in nature encouraging you to get in touch with subliminal forces in society and harness them in your professional life. This influence is good for mass marketing techniques, working with the media and advertising, and international contacts. It is especially good for New Age interests, awakening latent talents for clairvoyance, astrology and the like. Unrealistic dreams and expectations can take flight now, so try to be as realistic as possible.

PERSONAL - TRANSCENDENCE: Inner dimensions
This rather subtle influence will affect those people who are sensitive to inner realms of consciousness and the imagination. It is a great time for fantasy and spiritual creativity although care has to be taken not to lose all contact with reality. Many deep emotions are stirred now, giving rise to new consciousness states and a transcendental awareness. If you can channel these rarefied energies through meditation or group work, you can expect considerable spiritual growth now. This is the time to see auras, enter dream states and develop intuitive and clairvoyant powers.

Transformation

Pluto In Virgo

COLLECTIVE - TRANSFORMATION: Servitude transformation
Pluto has an irregular orbit around the Sun which takes about 248 years. When Pluto is closest to the Sun it takes only 12 years to traverse a sign. When it is furthest away, it takes approximately 30 years. Its influence is felt collectively on a very deep level in society, bringing trauma, transformation and renewal in regard to the sign it is in. Individuals with their Ascendant in Scorpio may express this influence in a personal way, otherwise its effect is expressed as an underlying influence on a whole generation. Pluto was in Virgo from 1711 to 1725, and again from 1957 to 1971. Major transformation in employment trends took place at these times because of developments in technology which undermined traditional crafts and professions. These changes had a profound affect in both the factory and the land through

industrial and agricultural reform. Socially there was a greater emphasis on services and health reform, with new developments and a certain fanaticism - as regards hygiene and cleanliness. If you are able to channel this collective influence in a personal way you may have certain interests or talents in matters of health. You are especially aware of the interrelation of body and mind, and may have some troubling ailments as a result of this interplay, or as a result of oversensitivity to additives and impurities in food or other substances which you encounter in your daily life. Daily relations with friends in your place of work may also force you to re-evaluate social bonds. Difficulties in securing employment, or a feeling of being misused at work may force you to change direction in your profession. You have the capacity to enact deep-seated changes in social service functions in society.

Pluto In 12th House

PROFESSIONAL - TRANSFORMATION: Exorcism

You may be able to use a talent for helping people on a psychological level in your career. You have the ability to keep cool when everything around you is in chaos, making decisions and cutting through to the essential issues when there is nothing firm to hold on to. You can deal with people who have gone over the abyss into total mental confusion, psychosis and self-destruction. You can orientate yourself in a psychic landscape populated by the demons of irrational fear and trauma. Perhaps at some point of your life you will work in a secret environment totally removed from the rest of society. You may also choose to throw in your resources into fighting evil forces in society. Having said this, you may be pathologically secretive yourself and afflicted by exaggerated fears of conspiracy, or that people go behind your back, or with the idea that everything is being manipulated by powerful and shadowy forces behind the scenes.

PERSONAL - TRANSFORMATION: Exorcism

During the course of your life you are going to have to face and purge inner psychological demons which defy the boundaries of rationality. Early in your life your behaviour will be subtly influenced by repressed fears such as the fear of the dark, or fear of nightmares, or fear of being locked away. You are more aware than anybody of the influence of the shadowy world of the unconscious, and this can give rise to a certain paranoia because of the idea that unseen forces are more powerful than you. At its worst you may be obsessed by unprovable conspiracy theories regarding large organisations. However, where there is evil you have the resources to combat it, and where there are people in psychic need you can step into their personal hellworld. You can develop powerful spiritual and psychological insights during the course of your life, and through a process of inner transformation and purgation you purify your soul.

Pluto Conjunction Sun

Please read page 6: "Sun Conjunction Pluto"

Pluto Conjunction Mercury

Please read page 11: "Mercury Conjunction Pluto"

Pluto Sextile Neptune

Please read page 26: "Neptune Sextile Pluto"

Pluto Square MC

This aspect is extremely powerful in your horoscope; every action you take will be coloured by this energy. As there is tension between these two planetary influences in your chart, it will be very difficult for you to achieve the promised

beneficial results before the age of 30.

PROFESSIONAL - GOALS: Back to the roots

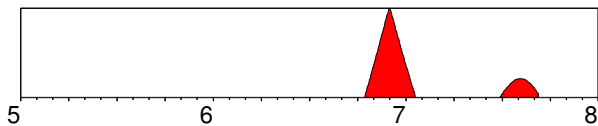
You are possessed by a compulsive urge to attain success or power and you invest much of your energies into your ambitions. A radical transformation in maturity will lead to a total redefinition of what you want to achieve - perhaps through the realisation that you have been trying unconsciously to fulfil the ambitions of one of your parents. You have a talent for dealing with psychology or psychic matters, but you are also capable of wielding personal power - though you tend to be autocratic.

PERSONAL - GOALS: Back to the roots

Parental and ancestral themes have a deep effect on your sense of direction. You may feel the need to eliminate the pull of inherited factors on your life. An obsessive urge to reorganise your environment can mean that you uproot your family and seek new professional challenges. Secrets and power misuse during your upbringing can make you suspicious of the motives of those close to you - both professionally and domestically.

Jupiter Transiting Square Pluto

10/17/2006 -> 9/10/2007



Major irritation factors arise as a result of this influence, yet if you use this period to initiate dynamic change you will be able to make dramatic progress in your life.

PROFESSIONAL - TRANSFORMATION: Power play

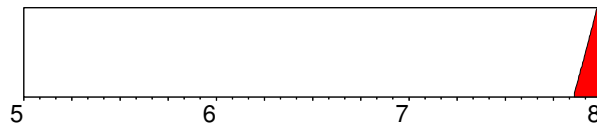
During this period you will be initiated into the use of power and secrecy in the professional sphere. This may be because you discover hidden factors, corruption or power misuse behind some professional facade, or it may be because you learn to harness your own personal power or psychological insight in your career. Whatever the circumstances you may feel a certain anxiety because of circumstances seemingly beyond your control. Make sure you are on good terms with legal and financial authorities, or at least cover your tracks if you aren't!. Big money can be involved during this period, involving large gains or losses, so make sure you have the best financial advice.

PERSONAL - TRANSFORMATION: Power play

There is a leap in your awareness of the power of the unconscious to shape your life at this time. You may choose to develop your emotional insights by learning more about psychology in one way or another. If you have any hidden anxieties or phobias you can expect them to be more acute or to come to the surface now. Even though this may be disturbing, there is a unique opportunity to understand the secret mechanisms of your mind and to eliminate the negative effect of repressions. You can become the intrepid explorer of some very dark territory indeed.

Jupiter Transiting Trine Pluto

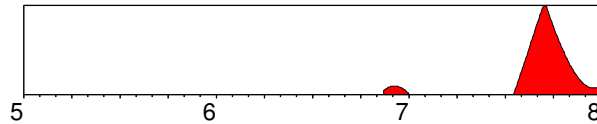
11/12/2007 -> 12/31/2007



Please read page 28: "Jupiter Transiting Square Pluto"

Saturn Transiting Conjunction Pluto

11/15/2006 -> 12/31/2007



You can expect powerful change in this area, as you learn to integrate the following influence into your life.

PROFESSIONAL - TRANSFORMATION: Bonds on power

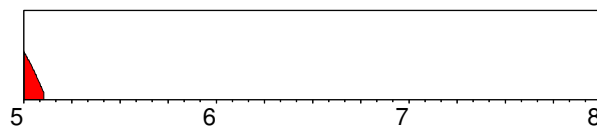
This influence may not be felt very strongly, unless you have strong Scorpio traits. This is a period when you are confronted with power manifestations in society, and it can be necessary for you to summon up reserves of strength and determination to handle situations which seem beyond your control. Take care in your dealings with police, tax authorities or underworld characters, as you are liable to meet people and groups who are in a position to humiliate you. In professional matters you have to take a closer look at what goes on under the surface. Eliminate any corrupt elements, and look more closely at your motivation when asserting your power.

PERSONAL - TRANSFORMATION: Bonds on power

Though sometimes rather subtle, this influence can release powerful elements in your unconscious mind. If you are a victim of emotional states such as jealousy and paranoia, now is the time to make an effort to deal with them. Deep-rooted psychological complexes which manifest as obsessive behaviour will surface now and the more you try to repress them, the greater power they will have over you. A sure danger sign is if you start accusing other people of evil behaviour, or if you feel that you are being shadowed or persecuted. Inner demons manifest in outer events now, yet solutions are to be found within your own being. You can contact archetypal forces now, for example through shamanism.

Uranus Transiting Opposition Pluto

1/1/2005 -> 2/7/2005



This extremely strong influence can bring change, dilemmas or separation. The likelihood of travel in connection with these issues is strong.

PROFESSIONAL - TRANSCENDENCE: Unpredictable power

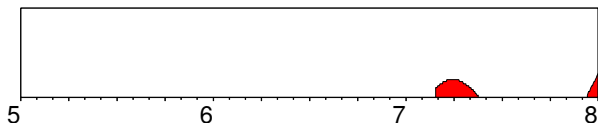
This influence will pass most people by, unless they have strong Scorpio character traits. Generally this is experienced as forces completely outside one's control revealing hidden flaws or secret affairs in organisations. Powerful and secret forces in society can impinge on one's career in completely unpredictable ways now. This is a time of extremism and violent uncertainty, and

allowances ought to be made as far as plans are concerned. Threats received at this time can awaken deep anxieties. If you work with computers beware of viruses and other unpredictable events. This is a good time for harnessing technological forces to consolidate power.

PERSONAL - TRANSFORMATION: Unpredictable power
For those who are sensitive enough to feel this influence, they can expect a powerful awakening of unconscious forces. This can be a very disturbing event, as you may feel that you have little conscious control over the deep repressions that can well up to the surface and dominate your consciousness. This is a good time for group therapy and greater psychological awareness. There may be an interest in archetypal forces such as shamanism and occult forces, but great care has to be taken with such forces. Violent imagery can surface in dreams and in waking life, and perhaps this process should be seen as an inner spring cleaning in the manner of an electrical storm which clears the atmosphere.

Pluto Transiting Trine Pluto

2/27/2007 -> 12/31/2007



This long-term and formative influence will enable you to realise your creative potential in the following area. Try to make the most of the opportunities which now come your way.

PROFESSIONAL - TRANSFORMATION: Evolutionary change
This influence - which arises in the late thirties - confronts you with the need to reorganise in connection with the evolution of whatever you are concerned with professionally. You have to examine in what areas you use or misuse power, and to what extent you feel dominated by forces beyond your control. In the power struggle that follows you have to harness all your survival urges. You will learn that the need to prevail in life sometimes necessitates actions which have dubious morality - but you cannot afford to be sentimental.

PERSONAL - TRANSFORMATION: Evolutionary change
During this period deep unconscious processes rise to the surface to be dealt with by your conscious mind. It is an excellent time for getting to the root of personal problems which have haunted you for the last 35 years. Deep psychological issues which have been banished from memory now resurface, and you should have the capacity and strength to restructure these forces so that they no longer control you on a subconscious level.

Destiny

N. Node In Libra, S. Node In Aries

PROFESSIONAL - DESTINY: Two to tango
The early part of your professional life is characterised by a strong need to excel and make some impact in a unique way. There is an emphasis on your personal independence, and you have the tendency to go it alone in your career. There is a desire to be number one in what you do, and in the early stage of your career you make dynamic efforts to achieve a special individual status. However, you are likely to discover that career satisfaction eludes you, when you attain personal success, and that success itself is difficult to attain alone. It is your destiny to subordinate

your ego needs to a growing awareness of the importance of professional relationships. Personal advancement alone cannot satisfy you in the long run. You achieve far greater satisfaction when you involve yourself in co-operative ventures and share successes with other people who are on your wavelength.

PERSONAL - DESTINY: Two to tango
A major dilemma in your life is in finding a balance between listening to and acting upon your own personal needs as opposed to taking into consideration and compromising with the needs of others. You are inclined when young to exclusively follow your own inner voice, reasoning that you must take care of yourself first. You insist on your independence, and see compromise as weakness. However this independence can bring loneliness or emptiness, and a deep longing arises to share your life's experiences. A transition comes in which the emphasis shifts towards awareness of the needs of others, and in partnership matters you will desire to make a stronger commitment. By embracing the challenge represented by dealing with another on an intimate level, and by exchanging hollow independence for an enriching partnership, you attain a new harmony in your life.

N. Node In 2nd House, S. Node In 8th House

PROFESSIONAL - DESTINY: Personal satisfaction
Building up a solid sense of personal self-worth and esteem is a lifelong task for you. Early in your life you experience a strong sense of deprivation and a great hunger for material and emotional security. You are acutely aware of the benefits other people enjoy, and strongly focused on what you feel you have lost. Indeed you may sabotage your material security more than once, because of your lack of faith in your ability to attain and enjoy material comforts. Because of an unconscious fear of others having power over you, you may cling to prestige or power in society. Eventually you can attain peace and security by relying on your own innate talents, and building up solid economic foundations as a result.

PERSONAL - DESTINY: Personal satisfaction
A turning point comes at some point in your life - particularly around the age of 37 - in which you learn to trust in your abilities to build a secure foundation for your physical existence. As you mature you learn to accept and enjoy the material benefits which come your way, and this in turns provides a secure environment for developing calmness and self-esteem. Early in life you may be afflicted by jealousy and anxiety as regards stability in your relationships. You exhaust yourself trying to control your partner emotionally. Later, however, desperate need gives way to a contented satisfaction. A number of erotic issues and relationship obsessions give way at this point to a less desperate and more peaceful concept concerning intimate relationships.

N. Node Sextile Sun, S. Node Trine Sun

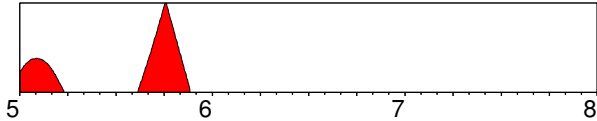
Please read page 6: "Sun Sextile N. Node, Sun Trine S. Node"

N. Node Conjunction Jupiter, S. Node Opposition Jupiter

Please read page 20: "Jupiter Conjunction N. Node, Jupiter Opposition S. Node"

Jupiter Transiting Conjunction N. Node, Jupiter Transiting Opposition S. Node 1/1/2005 -> 11/19/2005

hunger felt at this time can not be satiated by outer success.



You can expect powerful change in this area, as you learn to integrate the following influence into your life.

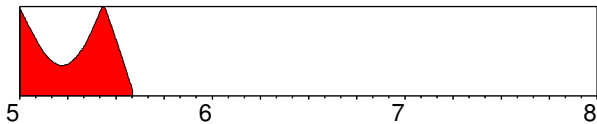
PROFESSIONAL - DESTINY: Understanding karma

You can expect an expanded circle of contacts at this time, with a special emphasis on people who are seeking influence on a large scale in society. Opinion-makers, advisers and foreigners can bring a new perspective in connection with future planning. You may feel that your destiny is interwoven with some larger plan. Greater awareness of the direction you wish your life to take can mean making a few adjustments. Do not let inflated ideas about your destiny or personal importance lead you astray.

PERSONAL - DESTINY: Understanding karma

This is a time when meetings have particular significance in terms of karma and your growth as an individual soul. You may have a powerful experience connected with some group activity now and gain greater insight into your soul and your fate as a human being. There is also a strong tendency to be drawn into a web of spiritual illusions - though you will surely also have rewarding experiences. You are drawn to partners who have a deep significance for you now, for good or ill.

Saturn Transiting Square N. Node, Saturn Transiting Square S. Node 1/1/2005 -> 8/3/2005



Major irritation factors arise as a result of this influence, yet if you use this period to initiate dynamic change you will be able to make dramatic progress in your life.

PROFESSIONAL - DESTINY: Group responsibilities

This period is characterised by a professional commitment with a group and the responsibilities that this commitment involves. The interests of the collective may turn out to be more relevant for your career development than your own ambitions or desire for status. Older people in authority may impose limitations on your development, and you can experience a compelling need for greater self-discipline to deal with the demands made on you. The decisions made now can have an important formative effect on your destiny. Benefit comes through subordinating ego needs for the good of others, and accepting the hand of fate, as it moves in your career.

PERSONAL - DESTINY: Group responsibilities

This is a time when time will stand still for a while, so that you can take stock of your ambitions and goals in life and see where they have led you. It is a fateful period in which your responsibilities to others and your role in society can become very important. Some people feel that their life direction leads to a blind alley in these months, or that plans for the future are futile and empty. There is benefit to be attained through inner spiritual discipline, as the

Planetary Symbols and their Meanings

THE SIGNS

♈	ARIES	Spontaneous activity	Ruler
♉	TAURUS	Consolidation, stability	Mars
♊	GEMINI	Duality, communication	Venus
♋	CANCER	Receptivity, nurturing	Mercury
♌	LEO	Self-realization, creativity	Moon
♍	VIRGO	Organisation, analysis	Sun
♎	LIBRA	Balance, relating	Mercury
♏	SCORPIO	Intimacy, penetration	Venus
♐	SAGITTARIUS	Knowing, expanding horizons	Pluto/Mars
♑	CAPRICORN	Responsibility, striving	Jupiter
♒	AQUARIUS	Humanitarian, consciousness	Saturn
♓	PISCES	Selflessness, spirituality	Saturn/Uranus
			Jupiter/Neptune

THE PLANETS

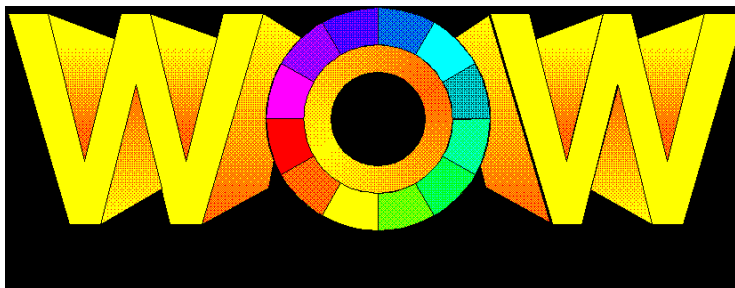
#1	THE SUN	Identity, individuality, the father
#2	THE MOON	Instincts, the unconscious, the mother
#3	MERCURY	Mentality, communication, siblings, travel
#4	VENUS	Love, romance, partnership, values, women
#5	MARS	Drives, sexuality, men, brothers, desire
#6	JUPITER	Wisdom, vision, expansion, convictions, space
#7	SATURN	Challenge, concentration, restriction, time
#8	URANUS	Originality, renewal, revolution, eccentricity
#9	NEPTUNE	Transcendence, spirituality, illusion, suffering
#:	PLUTO	Transformation, humiliation & power, underworld
#;	NORTH NODE	Destiny, group involvement, future potential
#<	SOUTH NODE	Past karma, deep experience, lessons learned

THE HOUSES

1st	HOUSE	Self absorption, personal projection, appearance
2nd	HOUSE	Values, self worth, finances and assets, security
3rd	HOUSE	Travel, local network, siblings, communication
4th	HOUSE	Foundations, family, ancestors, home atmosphere
5th	HOUSE	Self-expression, children, identity security, play
6th	HOUSE	Service, working environment, health, integration
7th	HOUSE	Partnership, dealings with others, adversaries
8th	HOUSE	Others' resources, inheritance, secret powers, death
9th	HOUSE	Long-distance travel, beliefs, higher education, law
10th	HOUSE	Ambitions, authorities, goals, professional expression
11th	HOUSE	Social affinities, groups, friendships, political visions
12th	HOUSE	Withdrawal, isolation, the divine, the inner worlds

ASPECTS

♌	CONJUNCTION	Fusion of energy, unity, singularity
♍	OPPOSITION	Separation, projection, split, polarity
♎	TRINE	Harmonious resources, creativity, insight
♏	SQUARE	Disharmony, diverging needs, conflict
♐	SEXTILE	Mental and social resources, creative harmony
♑	QUINCUNX	Servility, compulsiveness, lack of integration
♒	SEMISQUARE	Hidden tension, selfish antisocial tendencies
♓	SESQUISQUARE	Compulsive behaviour, power trips
♈	SEMISEXTILE	Either material or spiritual drive for integration



MADONNA CICCONE

This horoscope is your personal cosmic fingerprint. No other person will have exactly the same combination of influences, unless they were born in the same second and exactly the same place as you were.

With 10 planets, 12 signs of the zodiac and 12 houses there are approximately 1500 simple combinations in the horoscope, and when you add to that the different degrees and combinations between planets there are tens of thousands of influences which have to be weighed and juggled in any astrological interpretation. No computer programme can do this satisfactorily.

THE DIFFERENT SECTIONS

World of Wisdom is designed to simplify this process. It indicates for example the relative strengths of different planetary influences to help the reader's judgement. Furthermore this written report is divided up into sections on identity, emotions, mentality, love and sexuality to eliminate apparent contradictions which arise in the character description. But the reader must bear in mind that contradictions will arise. People are complex and contain many contradictory traits. Diametrically opposed character descriptions will either reflect inner dilemmas or outer conflicts reflected in the behaviour of others.

PROFESSIONAL OR PERSONAL PROFILE

Each interpretation can be divided into two main sections: the professional and the personal. The professional section addresses the questions: "What talents do I have?" and "How can I use this ability?". The personal section is concerned with relationships and hidden psychological causes, and addresses the question: "How can I improve myself in this area?"

PAST, PRESENT & FUTURE

This basic module of World of Wisdom also contains a dynamic module and therefore goes beyond a static analysis of personal character. By activating the dynamic module the unfoldment of the horoscope through time is described. By analysing the current trends, it is therefore possible for the reader to gain insight into events just past, events happening at the present moment and trends in the future.

It is our hope that the written report will give those who do not have the time to bury themselves in the study of astrology, the opportunity of gaining insight into both their professional and personal life.

ADRIAN ROSS DUNCAN, ASTROLOGER

TABLE OF CONTENTS:

Wheel + Info	2
Life Path	3
Identity	4
Emotions	8
Mentality	11
Values	13
Drives	16
Wisdom	19
Challenges	21
Originality	24
Transcendence	25
Transformation	27
Destiny	29
Planetary Symbols and their Meanings	31

World of Wisdom
Horoscope Interpreter

<http://world-of-wisdom.com>